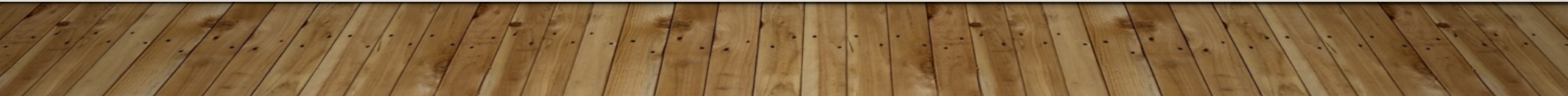


WATERSCAPES: SPARKLE AND SHINE

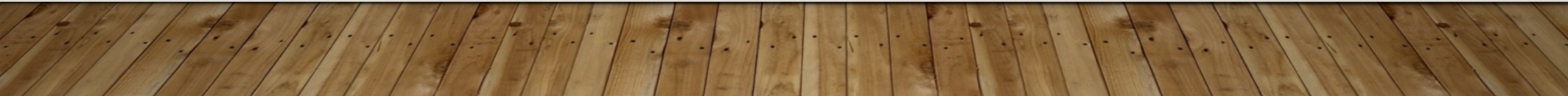
NEWTON WATERCOLOR SOCIETY, DEC. 12, 2020

NANCY DUVERGNE SMITH



WATER IS MAGIC

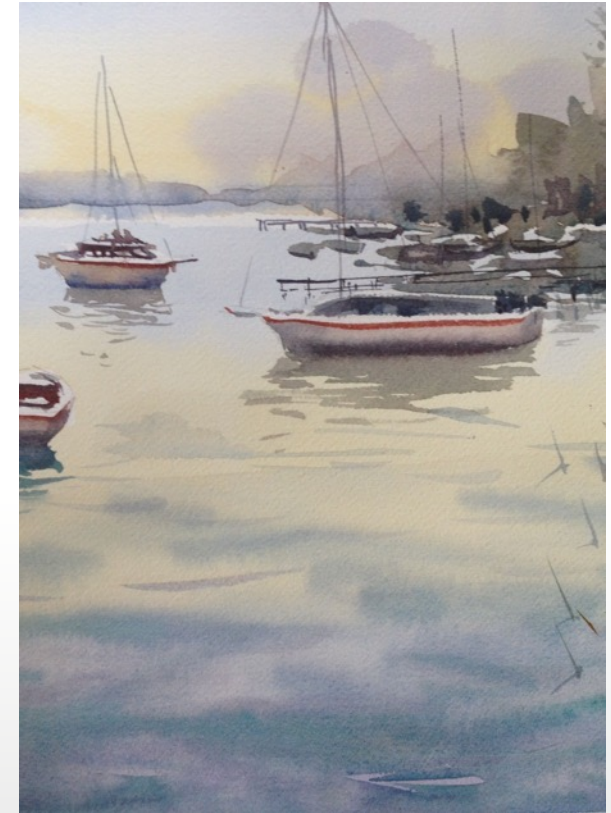
- Painting water is about illusion, connection, and feeling.
- Surfaces can be transparent, translucent, reflective, or sparkling.
- Motion can be still, moving subtly, or cascading along.
- Environment usually creates water's shape.



BEAUTIFUL BAY

Wet on wet is the starting point for gentle waters.

Additional strokes mingle with the wet wash and become more defined as the paper dries.



STILL WATER

Glimpse of a swamp near Andover.

Water reflects sky—wet into wet.

Crisp shadows under plants, rocks in middle grounds.

Foreground rocks frame the scene.



STILL WATER CLOSE UP

You can continue to add sky colors as long as the paper remains wet.

As it dries, the brush strokes become more and more defined.

Sharp reflections—like shadows under the rocks—are best done wet on dry.



ELM BANK

Watercolor and ink, drawing frames the rocks and water.

Falling water is rendered by linear strokes.

Light falls from the right on to rocks and rivulets.



ELM BANK DETAIL

Drawn lines indicate water direction.

Horizontals suggest pooled water.

Verticals show falling water.

White areas suggest sparkle; dark areas show depth.



GEESE ON THE CHARLES

Geese on the shore and the house in the woods bracket the river.

Abstract forms in the water suggest the river flow and reflections.

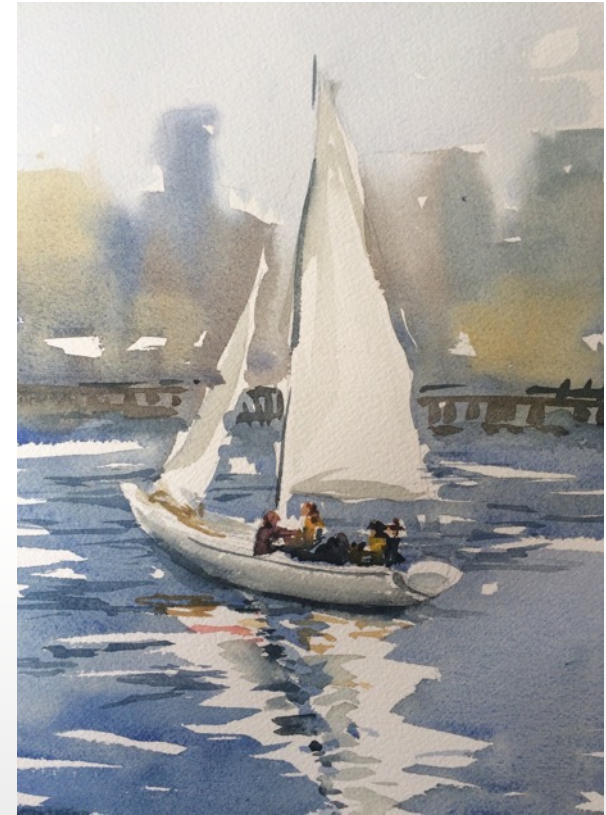


BOSTON HARBOR SAILING

Simple sketch with city skyline melting into horizon.

White sail links to white reflections, distant structures.

Light and dark horizontal wave forms suggest water in motion.



BOSTON HARBOR SAILING, CLOSE UP

Light breaks up abstractly.

Horizontal dark brushstrokes
indicate water motion.

Focus on people reinforced by water
reflections.



WATERLILIES I

First go at lily pads on a lake.

Edges are firm lines, connection between lily pads and their reflections a bit harsh.



WATERLILIES II

Looser rendition plays with objects and reflections.

Crisp flower details against soft water forms with suggested lily pads.

Duller reflected leaves dissolve into water.



WATER LILIES II CLOSE UP

Water shapes are abstract.

Shine is indicated with lighter shapes.

Leaf and flower reflections positioned below forms and in duller colors.

Multiple blues and greens mingle in water's surface.

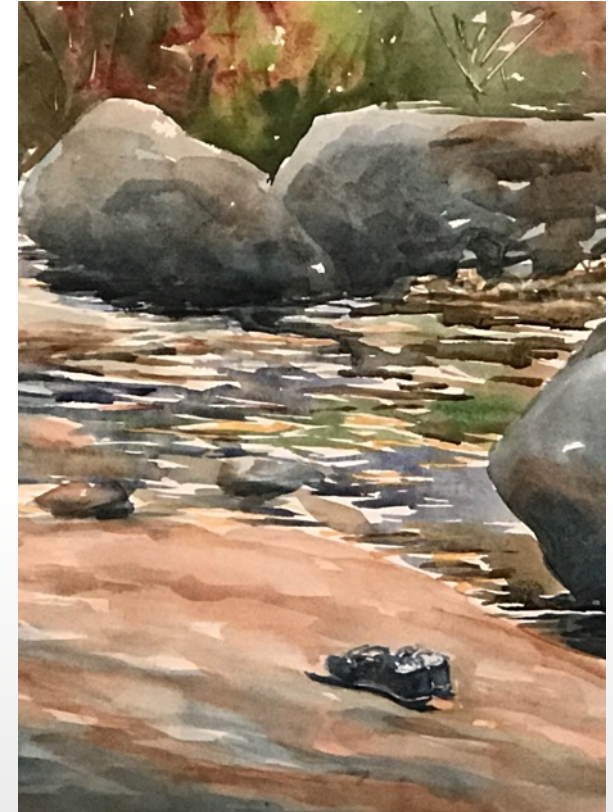


DIANA'S BATHS WITH SNEAKERS

Excerpt of a horizontal painting.

Path of stream starts with partial light wash but mostly left white.

Using a small brush, swinging horizontal strokes indicate water surface and surrounding colors.



DIANA'S BATHS CLOSE UP

Sparkling highlights are indicated by untouched white paper.

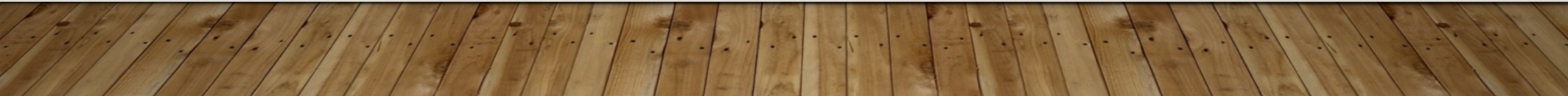
Horizontal brushstrokes in the colors of the reflected environment indicate rippling water.

Dark shadows under rocks suggest depth.



CELEBRITY QUIZZES

Three waterscape examples – and you will guess who is the artist.



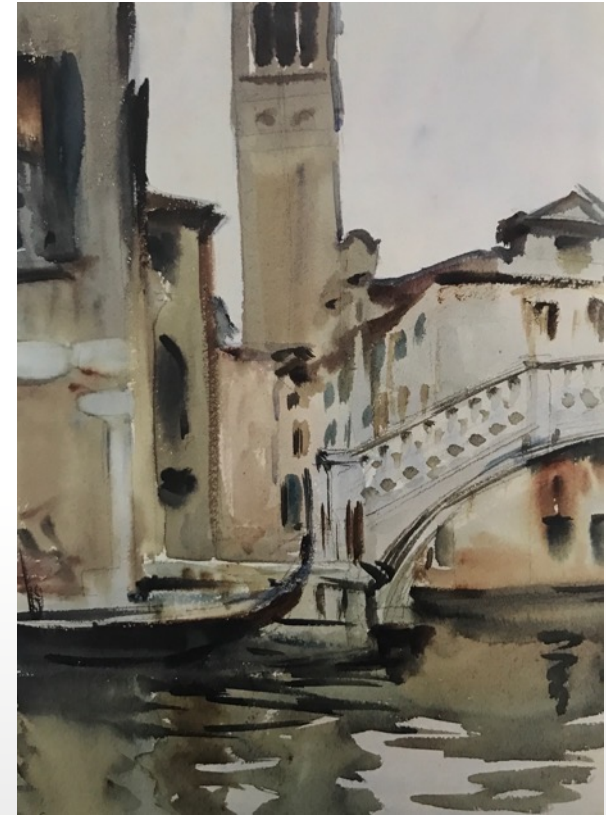
WHAT MAKES THIS LOOK LIKE WATER?

Who is the artist?



JOHN SINGER SARGENT, 1856-1925

Bridge and Campanile, Venice, 1902-04



WHAT MAKES THIS LOOK LIKE WATER?

Who is the artist?



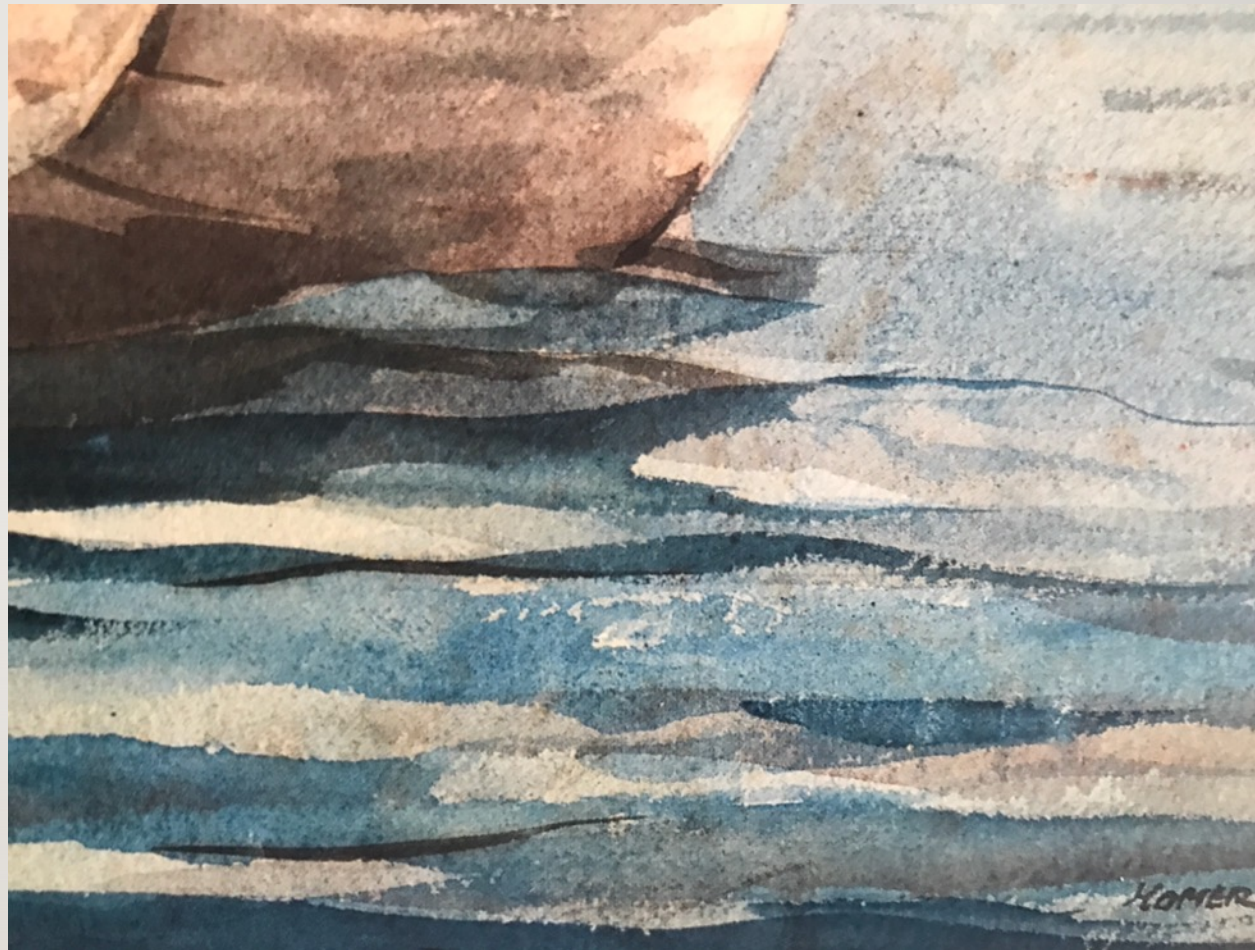
JOHN PIKE, 1911-79

Wash Up Time, date unknown.



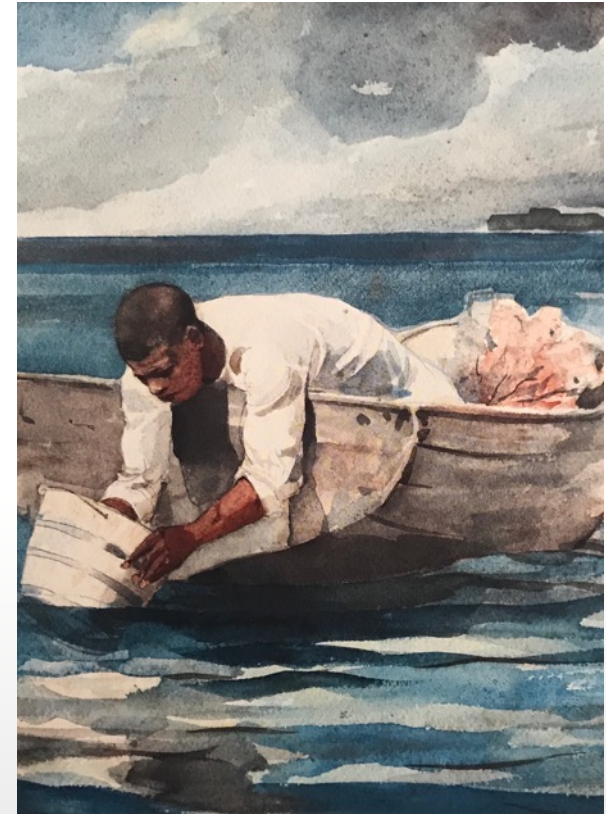
WHAT MAKES THIS LOOK LIKE WATER?

Who is the artist?



WINSLOW HOMER, 1836-1910.

The Water Fan, 1898-99.



QUESTIONS??? THANKS!

Learn more: nancyduverguesmith.com

Copyright 2020: Nancy DuVergne Smith