

Watercolor Painting Class

with M. Christine Landis



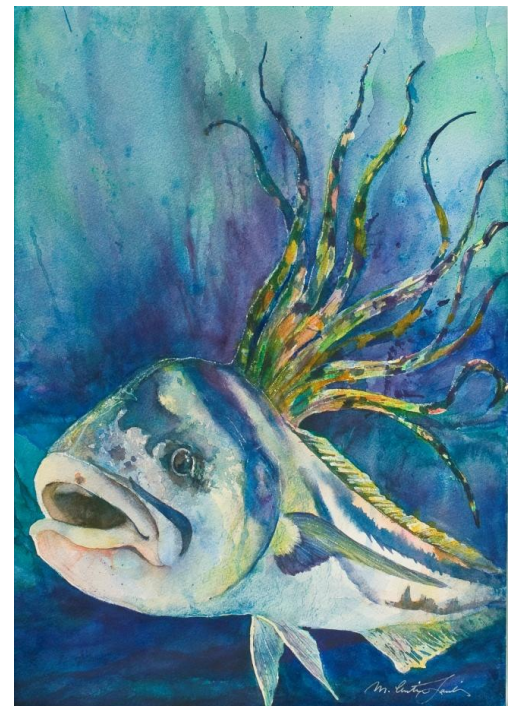
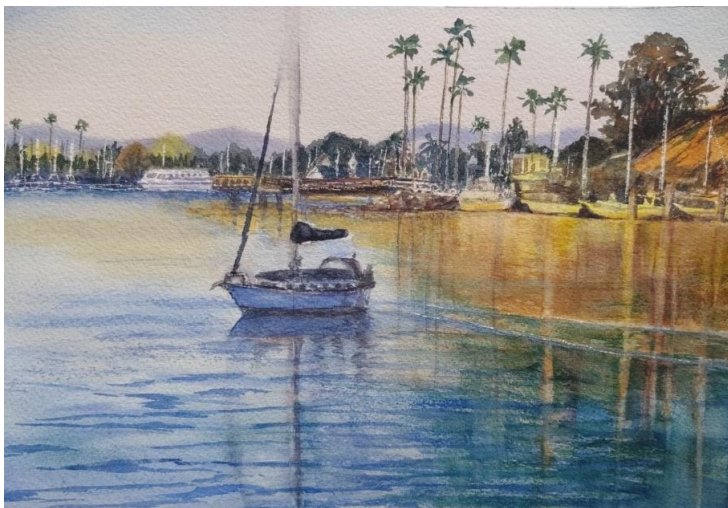
Charlotte Burrie Civic Center
2669 N Federal Highway
Pompano Beach, Florida 33064

954.786.5566

1st and 3rd Wednesdays each month, 9:30 – 11:30 a.m.

Learn specific techniques such as layering watercolors, lifting color, masking out shapes, wet in wet washes, how to paint flat and variegated washes, and much more, plus some drawing and design instruction for those that want that. A new topic or technique will be explored each session, with demonstration as well as hands on practice, followed by question and answer time on the day's topic or bring in your own work and get suggestions and help with trouble spots.

COST: \$25 per class, bring your own supplies
(see recommended supplies list on reverse)



We will discuss how to choose the best drawing, sketching and painting supplies during the class sessions, but to get started you will need the following basics:

PAINT

watercolor tubes or pans, minimum of 6 colors:

ultramarine blue	pthalo blue (also sometimes called prussian blue)
alizarin crimson	scarlet lake (warm red color similar to cadmium red)
aureolin yellow, or Hansa yellow	burnt sienna

You would benefit from also having a tube of one or more of these colors, however these are not required and we will get more into which additional colors to add to your palette as we go through the sessions:

cobalt blue	indigo blue
cobalt turquoise	hookers OR pthalo green
quinacridone gold (more transparency)	quinacridone magenta
yellow ochre (more earthy, opaque)	opera pink

BRUSHES

minimum of two good quality watercolor brushes:
a flat 3/4 or 1", angled or not, doesn't matter
a round #12 or #14

if you want to also have a couple of smaller sizes of the flat and rounds, you will find uses for them, but they are not required. A large 2" flat wash brush comes in handy for large work, but again it's not required. More on brushes during the sessions!

PAPER

you will need lots of good watercolor paper, Arches is a great brand and is available in "blocks" that will not warp and buckle when wetted, but loose paper can be cut to size and taped down to a lightweight board to give it that same stability. Brand doesn't matter so much at this point, just make sure to get 140# or better, no 90# paper, it will not hold up to what we'll be doing to it. I use cold pressed rather than hot pressed because I want the more textured surface. This is my preference, but also my recommendation to you. There's so much more to know about paper but we will get into that in the course.

*If you buy loose paper or paper in a pad but that is not a "block" (which means all the pages are glued together on all four edges) be sure to bring masking tape and a lightweight board of about 16 x 20 inches.

Miscellaneous

You'll also need pencils, a plastic eraser, a water container and some papertowels

*Since the class is 2 hours long, you can bring a snack or beverage if you wish.