

Loretta Bebeau

BIOGRAPHY

Loretta Bebeau has exhibited works on paper for more than 25 years, both regionally and nationally. She has taught drawing, painting, and art theory at several venues, including the University of Minnesota. Bebeau has been active with Northeast Minneapolis Arts Association, and W.A.R.M. Bachelor and Master degrees were augmented by residencies at Vermont Studio Center, and the University of Notre Dame.

Her art has been included in over 50 group exhibits, most notably *Revealing Culture* at the Smithsonian Institution, 2010. (see: website Information section) Solo exhibits include local colleges, small galleries, and health centers.

With a Grant from the Minnesota State Arts Board, Loretta developed a project using the languages of Minnesota. The project has been shown at the University of Minnesota, St. Cloud State University, and Regla DeOro Gallery.



Loretta by her art library, 2014



Languages on Beech panels - *Dance of Words*, 2013 - U of Minnesota
The shared word: Health, or phrase of well-being

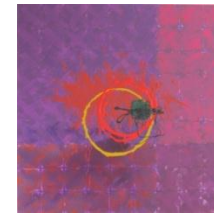
STATEMENT

My art is a synthesis of formal, emotional, and social concerns. I like to push the boundaries of tradition and expand my medium while acknowledging those traditions. My Bachelor's degree is Art Education and harnessing creative process for optimum performance has me captivated. I spent years on committees talking about Learning Styles and the Multiple Intelligences. After several dramatic mid-life experiences, I began applying theory to my art, steering away from images to allow interpretive flexibility; accessing emotion through color. Because I combine research with gesture, my work is more conceptual than pure abstract expressionist. I use part of that method, but developed a personal vocabulary of marks to provide structure.

My lifetime of art has included several mediums. Each medium brings unique challenges, but it's the challenge and mental growth that fulfills me. The thrill lies in seeing an idea become a solid piece.

With each project, I try to go another step. Art is a vehicle for personal growth and joy. My art contributes to the community through its informality and accessibility. A certain amount of courage is required to be messy, to find new solutions, and then move forward as a person. Art is my vehicle.

The language panels inspired the paintings shown here.



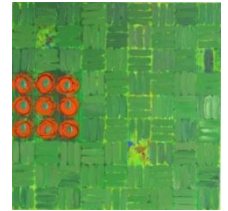
Prospero, 2012



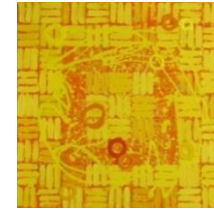
Reddish, 2012



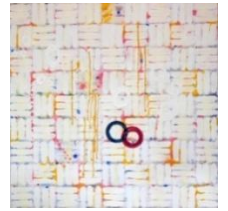
Pink Joy, 2012



Family Garden, 2012



Yellow Spree, 2012



Play White, 2012



Knowing Blue, 2012



Black Wonder, 2012

Paintings: Acrylic on canvas, 36x36 inches each
Language panels: Pastel, Acrylic, 36x36 inches each

Customized Commissions available in this style.



Revealing Culture - Smithsonian International Gallery, 2010

Revealing Culture was an invitational exhibit juried by museum curators for the intention of showcasing artists with a disability. This was an international exhibit of fifty five artists who worked in a variety of mediums. My four entries demonstrated how an 80% hearing loss affects me. Drywall was the material.

HOW TO SUPPORT the artist:

Small purchases of art are welcomed.
Payment plans,
Cash, Check, and Credit Card.

Please inquire about pricing information.

Support by introduction to exhibit venues.

Support by offering speaking opportunities.

Support by recommendations.

Support by attending exhibits.

STUDIO LOCATION:

Northrup King Building #343
1500 Jackson St. NE
Minneapolis, MN 55413 USA
www.northrupkingbuilding.com

www.lorettabebeau.com - more info
Lorettabebeau@msn.com
ph: 612-462-3270



SCAN

for website

OPEN STUDIO EVENTS

First Thursday of every month 5 - 9 p.m.
By appointment - regular studio hours daily
ArtAttack - November weekend
NEMAA - ArtAWhirl - May weekend
www.nemaa.org



Cacophony I, 2010 - 36x36 inches
Graphite, acrylic on gypsum, nine parts



LORETTA BEBEAU

visual artist

based in

Minneapolis, MN