



RUTH STAGE

RUTH STAGE

The Water's Edge

21 February – 15 March 2015

First published in 2015 by Campden Gallery Ltd
High Street, Chipping Campden, Gloucestershire GL55 6AG

www.campdengallery.co.uk

All rights reserved. No part of this publication may be reproduced, stored in a retrieval system or transmitted in any form or by any means electrical, mechanical or otherwise, without first seeking the permission of the copyright owners and the publishers.

All images in this catalogue are protected by copyright and should not be reproduced without permission of the copyright holder. Details of the copyright holder to be obtained from Campden Gallery.

Copyright ©2015 Campden Gallery Ltd.

Photography: Peter Cattrell
ISBN: 978-1-908753-29-8

Front cover: Composition with Catkins
70 x 80 cm egg tempera on gesso board



THE WATER’S EDGE

Ruth Stage’s new body of work rests at ‘The Water’s Edge’, pausing to absorb these places of quiet contemplation. Stage’s technique lends itself to this subject; her layers of egg tempera creep across her paintings like water themselves. Glassy and translucent, they gleam at the surface, melting darkly into the watery depths of the deep below. Colour is silvery; light, in the delicate application of many layers, it languishes across the water’s surface, yet quickens with the intense injection of pigment that forms the reflections of the surrounding landscape. These reflections are playful, energetic imitations of their reality that skim the surface in elegant and expressive curls. Shape has always been important to Stage’s work, in the repetitive forms of nature – seed or flower heads – or in casting the pattern of a landscape. In these new works Stage explores these outlines even further; in both the air – a wave of dancing golden leaves – and upon the mirrored world below. In looking at the works of both JMW Turner, inspired by his light and milky translucence, and Paul Klee, whose compartmentalised colour premeditates her own, Stage finds a union of style that pushes her painting even further.

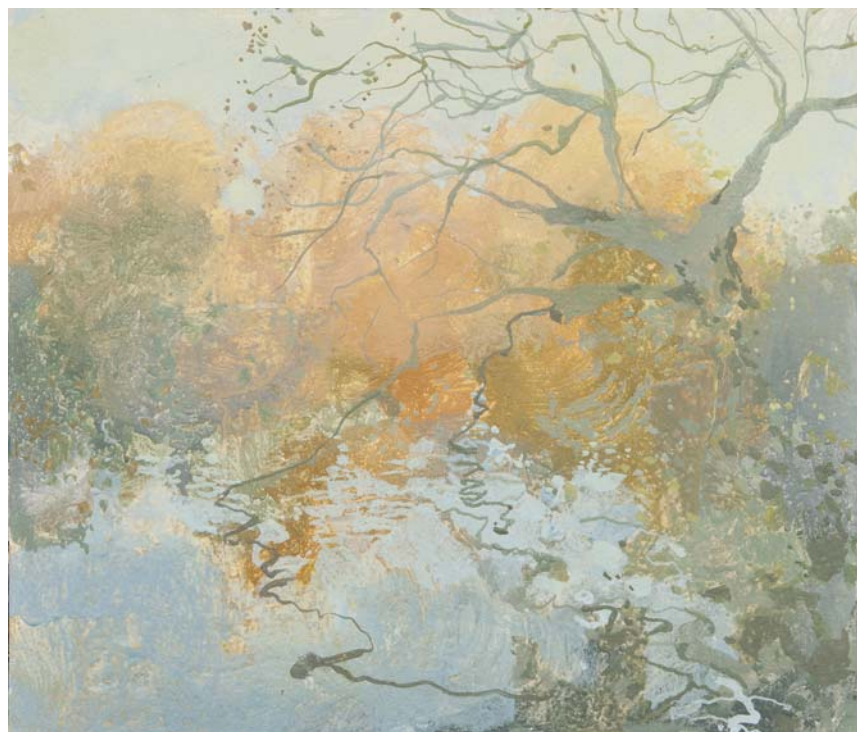
Sophie Hill, January 2015

‘Ruth Stage is something of a phenomenon among contemporary landscape painters, using the apparently painstaking technique of egg tempera on white gesso to achieve remarkably fluid, virtuoso effects of light, pattern and texture, with more vivid colour being achieved by the use of pure colour mixed in the egg-yolk. It has won her a remarkable following and considerable critical success, culminating in winning First Prize in the Lynn Painter Stainers’ Prize in 2013, but success does not seem to have undermined the quiet, critical integrity of the work.’

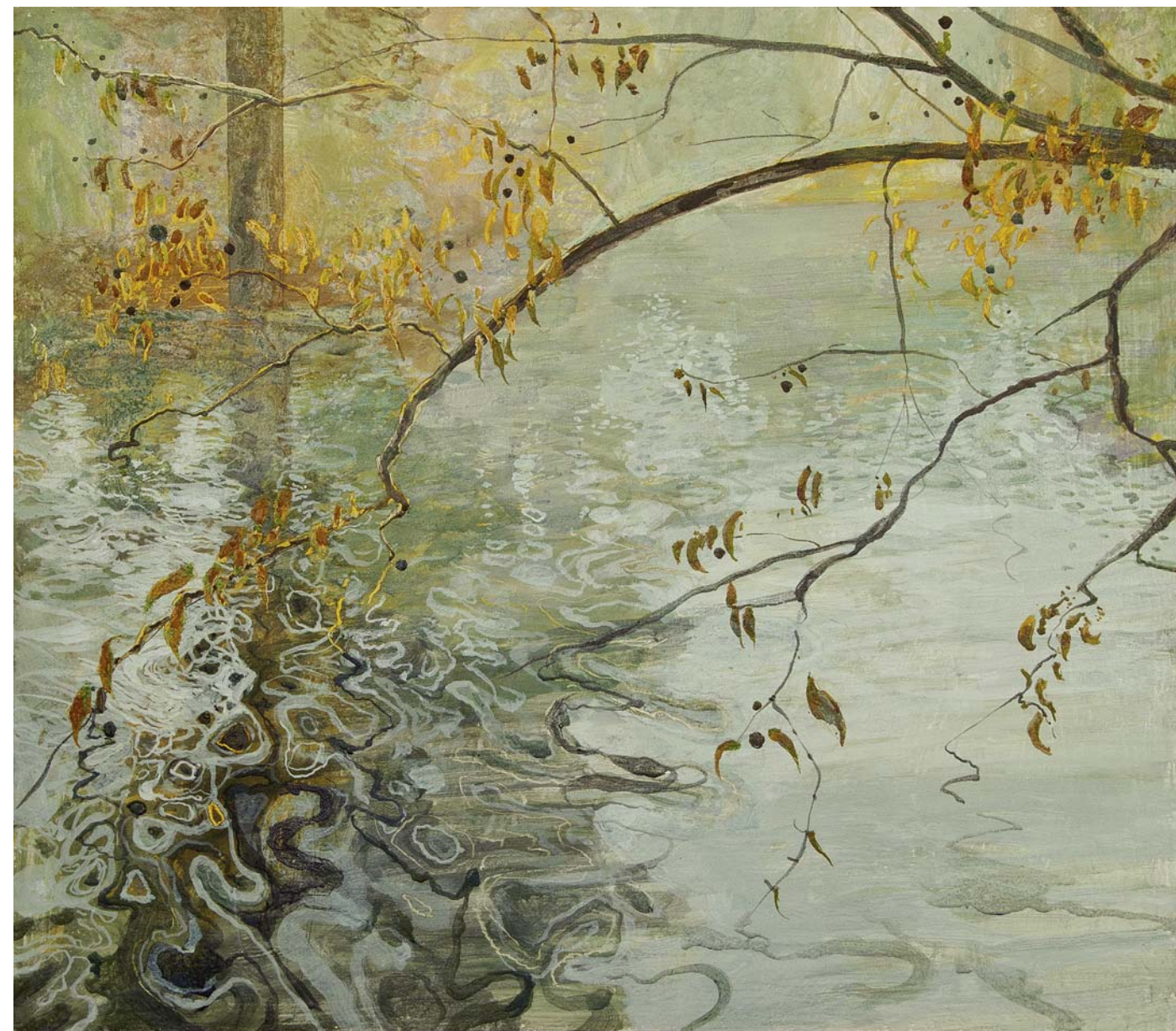
Nicholas Usherwood, Galleries Magazine, July 2014

Winter Landscape
100 x 120 cm egg tempera on gesso board





Dulwich Park in Sunlight
31 x 36 cm egg tempera on gesso board



Composition with Catkins
70 x 80 cm egg tempera on gesso board



Evening Light, Kew Gardens
23 x 31 cm egg tempera on gesso board



Palmhouse
100 x 120 cm egg tempera on gesso board



Beech Tree
48 x 56 cm egg tempera on gesso board



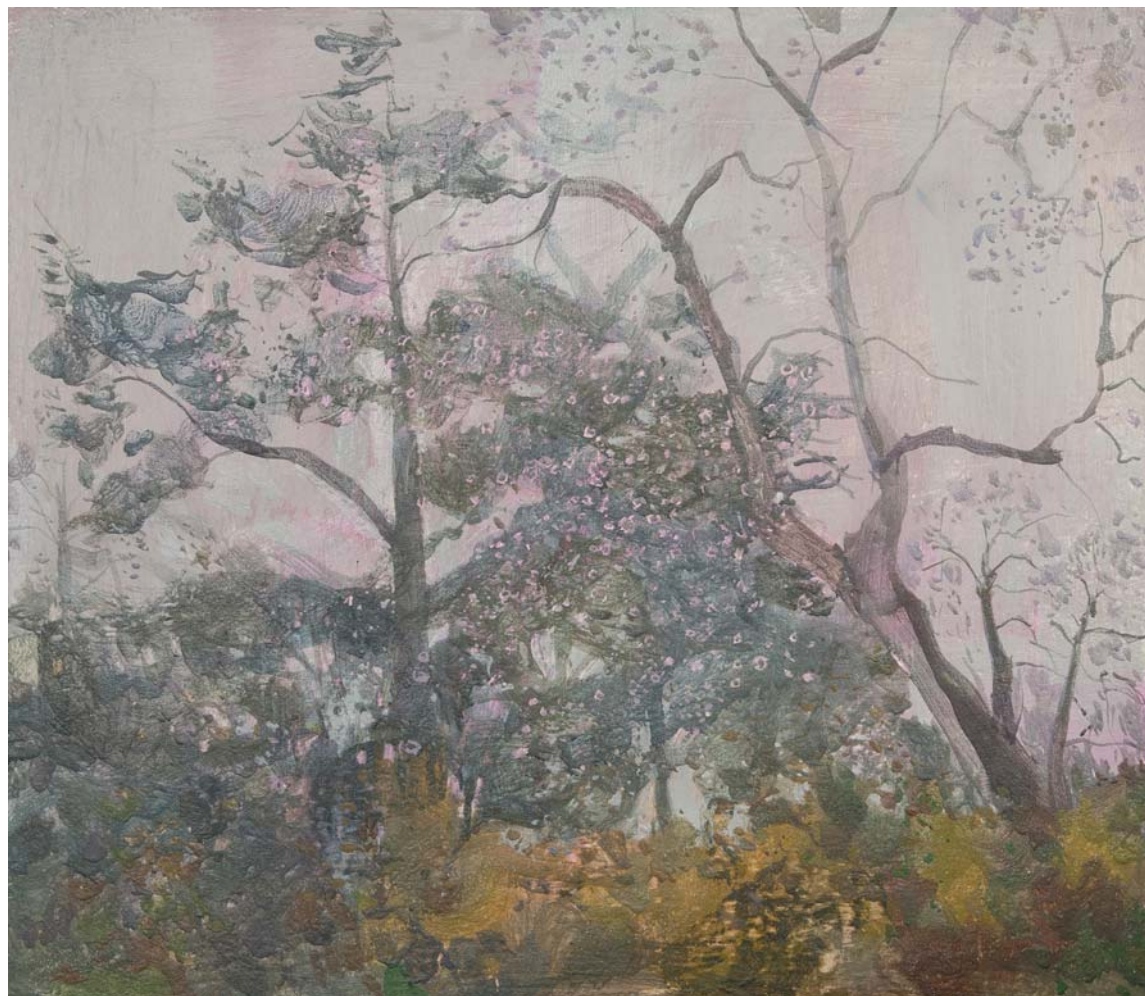
Autumn Walk, Kew
48 x 56 cm egg tempera on gesso board



Treeline with Witch-hazel 2
53 x 61 cm egg tempera on gesso board



Treeline with Witch-hazel 1
53 x 61 cm egg tempera on gesso board



Treetops with Blossoms
56 x 65 cm egg tempera on gesso board



Composition with Willows
70 x 80 cm egg tempera on gesso board



Croatian Landscape
48 x 56 cm egg tempera on gesso board



Beachlife, Croatia
100 x 120 cm egg tempera on gesso board



Sea with Swimmers
31 x 36 cm egg tempera on gesso board



Tentative Step
53 x 61 cm egg tempera on gesso board



Swimmer
31 x 36 cm egg tempera on gesso board



Beachcombing
56 x 65 cm egg tempera on gesso board



Early Morning Haze 1
35 x 43 cm egg tempera on gesso board



Early Morning Haze 2
35 x 43 cm egg tempera on gesso board



Blue Daisies
31 x 36 cm egg tempera on gesso board



Detail of Meadow
31 x 38 cm egg tempera on gesso board



Dahlias withTopiary, Dexter
53 x 61 cm egg tempera on gesso board

RUTH STAGE

Born 1969, Hartlepool

Education

- 1992-95 Royal Academy Schools
- 1988-92 Newcastle University
- 1987-88 Cleveland College of Art

Solo exhibitions (since 2000)

- 2014 Russell Gallery, Putney, London
- 2013 Campden Gallery, Chipping Campden
‘Common Ground’ (with David Brayne), Hilton Fine Art, Bath
- 2012 Hilton Fine Art, Bath
- 2011 Russell Gallery, Putney, London
- 2009 Russell Gallery, Putney, London
- 2006 Oakham Gallery, London (with Ben Sullivan)
New Grafton Gallery, London
- 2004 Villiers David Award Exhibition, New Grafton Gallery, London
- 2003 New Grafton Gallery, London
- 2002 ‘Light and the Landscape’, John Davies Gallery, Stowe
HW Fine Art, The Air Gallery, London
Samling Foundation, Keswick
- 2001 New Grafton Gallery, London
- 2000 Castlegate House, Cockermouth

Selected group exhibitions (since 2000)

- 2014 The Alde Valley Spring Festival, Suffolk
NEAC – Open Exhibition, Mall Galleries, London
- 2013 Lynn Painter-Stainers Prize, Mall Galleries, London
RAC Club Centenary Exhibition, Epsom and Pall Mall
- 2012 Affordable Art Fair, Battersea (with Manya Igel)
‘Ars Poetica ... The Land’, Hilton Fine Art, Bath
NEAC – Open Exhibition, Mall Galleries, London
New English Art Club at Bankside Gallery, London
Geedon Gallery, Colchester, Essex
- 2011 Messum Gallery, Selected NEAC Members
Geedon Gallery, Essex
NEAC – Open Exhibition, Mall Galleries, London
- 2010 NEAC at the Russell Gallery
Geedon Gallery, Colchester, Essex
Manya Igel, 20/21, Royal College of Art, London
- 2009 Grainger Gallery, two-person show, Whitstable
Geedon Gallery, Colchester, Essex
- 2006 Lynn Painter-Stainers Prize, Painter’s Hall, London
Autumn Exhibition, Geedon Gallery, Colchester
Manya Igel, 20/21, Royal College of Art, London

- 2005 ‘Bred and Buttered in the North’, New Grafton Gallery
Waterhouse and Dodd, London
- 2004 DACS, 20th Anniversary Exhibition, The Mall
Lloyds TSB, New English Art Club
Waterhouse and Dodd, London
Geedon Gallery, Colchester, Essex
‘Art London’, Duke of York’s HQ
- 2003 ‘The View’, Orleans House, Twickenham
Summer Exhibition, Royal Academy
Cedar House Gallery, Ripley
- 2002 NEAC, Royal Academy, Friends’ Room
‘Serious Pleasure’, Centro d’Art Modigliani, Florence, Italy
Cedar House Gallery, Ripley
‘Art London’, Duke of York’s HQ
- 2001 Laing Open Exhibition, Mall Galleries
Summer Exhibition, Royal Academy
- 2000-01 Twentieth Century Art Fair, RCA

Awards and prizes

- 2013 David Messum Prize (New English Art Club)
Lynn Painter-Stainers Prize – first prize winner
- 2004/05 Manya Igel Fine Arts Prize
- 2011 The Critic’s Choice (New English Art Club)
The Arts Club Prize (New English Art Club)
- 2010 The Woodhay Gallery Prize
- 2006 Lynn Painter-Stainers Prize – runner up
- 2004 NEAC Painters and Stainers Prize
- 2003 Villiers David Travel Award – winner (South East Asia)
The Arts Club Prize, NEAC
- 2000 & 01 Villiers David Travel Award – runner up (Scandinavia & Kenya)
- 1999 Elected Member of the New English Art Club
- 1996 M&G Prize – Young Artist of the Year, RA Summer
Exhibition
- 1995 Hunting Art Prize – runner up, Young Artist of the Year
Nat West Prize, finalist
David Murray Travel Scholarship (Italy)
- 1994 British Institute Prize
Tony Smith Landscape Award, RA Schools

Collections

Artbuthnot Latham & Co, AT Kearney,
Border Television, Charing Cross Hospital,
Chevron UK, Durham University,
Hiscox PLC, HSBC, Jo Hambro Investment Management,
M&G Group, Nat West Bank, Pearl Assurance,
Professional Football Association



High Street
Chipping Campden
Gloucestershire GL55 6AG
Tel: 01386 841555
info@campdengallery.co.uk

www.campdengallery.co.uk

Open Tuesday to Saturday 10.00am – 5.30 pm
Sunday 11.00am – 4.00pm

