

INSIDE State of the Art: Montana • Altermann Auction • Jim Norton • Theodore Waddell

Previews of Works For Sale at Upcoming Shows

AUGUST 2017

120

WESTERN ART

COLLECTOR



DISPLAY UNTIL 8/28/17

\$7.95US \$9.95CAN

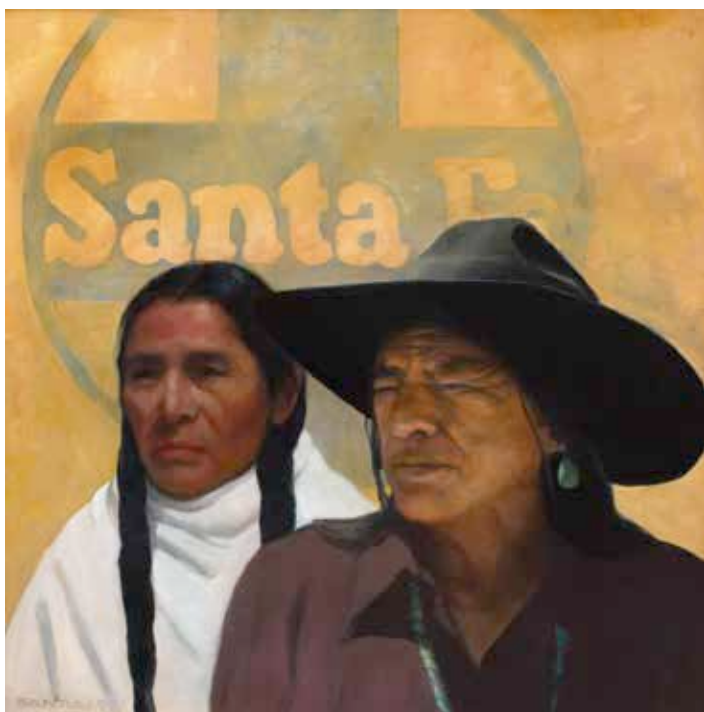
08>



0 09281 01937 4

UPCOMING SHOW

Up to 12 works

July 28-Aug. 12, 2017Blue Rain Gallery
544 S. Guadalupe Street
Santa Fe, NM 87501
(505) 954-9902**SHOW LOCATION SANTA FE, NM****ROSETA SANTIAGO***Memory Place**The Santa Fean*, oil on canvas panel, 18 x 18"*When We Were Young*, oil on canvas, 54 x 48"

In his rhetorical thesis *De Oratore*, the Roman consul Cicero (106-43 B.C.), wrote about the "method of loci," a mnemonic device for remembering things from faces to numbers and lists. Today the device is often referred to as a *Memory Palace*.

Roseta Santiago comments, "It's a house or a place in your mind where you put thoughts and things so you can remember where they are." *Memory Palace* is the title of her exhibition of recent work at Blue Rain Gallery in Santa Fe, New Mexico, July 28 to August 12.

Her painting *When We Were Young* depicts a Jemez artist who sells her pottery and jewelry under the portal at the Palace of Governors in Santa Fe. She recounted to the artist her memories of Indians traveling the

plains. Santiago portrays the dream in a two-dimensional sepia rendition behind the more dimensionally painted artist in the foreground.

"I'm on a constant search for people," Santiago explains. "I like to capture the essence of them. I'm fascinated by them, their surroundings, their lives, and I enjoy forming a relationship with them. We have a collaboration. I pay them a modeling fee and after I've sold the painting, I pay them again."

Weaver's Daughter features a young Navajo weaver. Santiago likes to have her portrait subjects front and center where viewer and subject share a space. She has brought the subject's life into the painting by having her wear clothes that she made herself, wearing her mother's spectacular squash blossom

necklace and standing in front of a weaving that references her mother's weaving.

In *Guadalupe Street*, Santiago combines her historical research and living models. She posed four of her Native friends in front of another friend's downtown Santa Fe shop as if they were sitting in front of a trading post looking into the window. A Kiowa silversmith from a 19th century photo inspired the figure in the foreground. She placed the figure there to bring the viewer into the scene. The figures in the background are in a softer focus to emphasize the frontality of the silversmith. 🐾

For a direct link to the exhibiting gallery go to



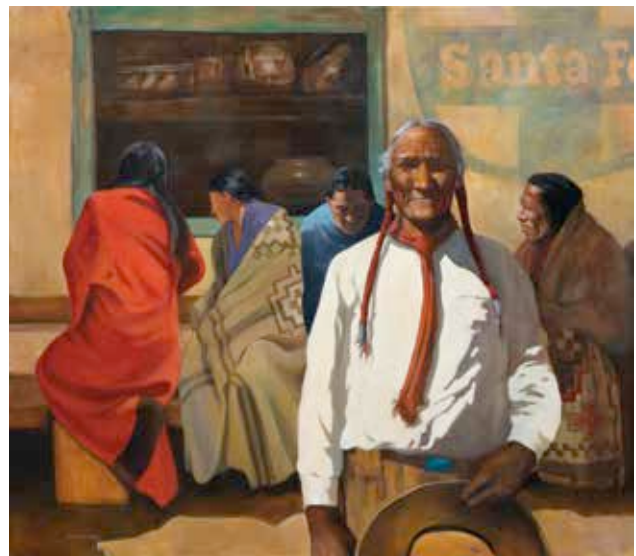
www.westernartcollector.com



Weaver's Daughter, oil on canvas, 40 x 40"



Ride to Blue Lake, oil on canvas, 40 x 40"



Guadalupe Street, oil on canvas, 42 x 48"