



567 Tremont #19, Boston, MA
2940 Twin Oaks Way, Wellington, FL
samsonprojects.com

917 494 5411
samson@samsonprojects.com



Cyrille Conan

August 5 - September 30, 2022

Cyrille and I go way back. He's one of the first people I met upon moving to Boston. As NYC natives we hit it off immediately. At Samson, he installed the debacle that was the Phelan solo. I owe him for that. We got drunk and high in this apartment. Now on the verge of him leaving and returning to NYC, we find ourselves waxing nostalgic and needing to work together so as to have a reason to breathe together.

When I started working abstractly back in 2012, I also started to make these little pieces. I was working as an art handler at the ICA, Boston and we always had a lot of left-over scrap wood. I had already started to collect and keep all the mock-ups from whatever show I was working on to use as a first layer as collages in paintings that I was working on.

I have worked at many institutions in and around metro Boston and had realized part of my process. Aside from inspiration and the knowledge gained from working directly with artists in contemporary shows, the museums and

galleries also provided me with valuable art supplies. It remains a part of my process to this day. They are a marker of time passed in the studio over the last decade. -- CC

[Cyrille Conan](#) was born in 1973 and grew up in Queens, NY to French immigrants. Cyrille graduated with a B.F.A. in Painting from the Hartford Art School before planting his roots in Boston in 1998. He is first generation American and is bilingual. He has dual-citizenship and identifies both as French and American. This duality is apparent in his artwork. The graphic nature and grit of the work derives from growing up in NYC in the 70s & 80s and the love of nature and natural forms distilled in him from Celtic/Breton culture have transformed into a minimal, organic, geometrical abstraction.

[Cyrille](#) has been developing a vocabulary of various mark making, collage and textures to allow for the paintings to generate as honestly and intuitively as possible. Each layer informs and dictates the final composition until he finds a visual balance of form, color and repetition. Practice: the marks you are seeing are visible. The mind is a localized phenomenon; yet thinking happens everywhere. These pictures play with that assumption. They make marks to gauge time passing and to record plates of location in space. He takes wood, ephemera, canvas, paint, dust, skin: cuts, pits, extracts established relationships, kneads, reassembles, inserts, compresses, sits in-wait at studio. Later, once the accretions recede, they are allowed in or out.

This home contains a wall of these paintings: the process here is on the surface. The marks work, I sense, with labor completed so that they might live and be lived with elsewhere, although that's never definite and/or defined.

While his primary medium is still painting, he works in a variety of mediums and scales. He recently had a duo exhibition, with Kenji Nakayama, at the [Trustman Gallery at Simmons College](#). He's produced site-specific installations and murals in galleries, corporations and the Boston Center for the Arts, the Museum of Fine Arts, Boston and Boston City Hall. He worked as a Preparator for the Design Department at the MFA, Boston helping to form a union.

A utopia is where marks are made without culture, in a vacuum, but that doesn't/wouldn't mean anything. Meaning requires some contact, some thing for the babbling to watch, on.

Samson Apt is located in Boston's South End. For a private viewing, please contact samson@samsonprojects.com. You can see more of his work by clicking his name above.



UNAN

2019, mixed media on panel, 11 x 5.75 inches, \$300



DAOU
2018, mixed media on panel, 11 x 6.75 inches, \$300



TRI
2014, mixed media on panel, 11 x 6.5 inches, \$300



PEVAR

2012, mixed media on panel, 11 x 6 inches, \$300



PEMP

2016, mixed media on panel, 11 x 6.5 inches, \$200



C'HWECH

2015, mixed media on panel, 11 x 5.75 inches, \$200



SEIZH

2012, mixed media on panel, 11 X 7 inches, \$200



EIZH

2014, mixed media on panel, 11 X 6.75 inches, \$300



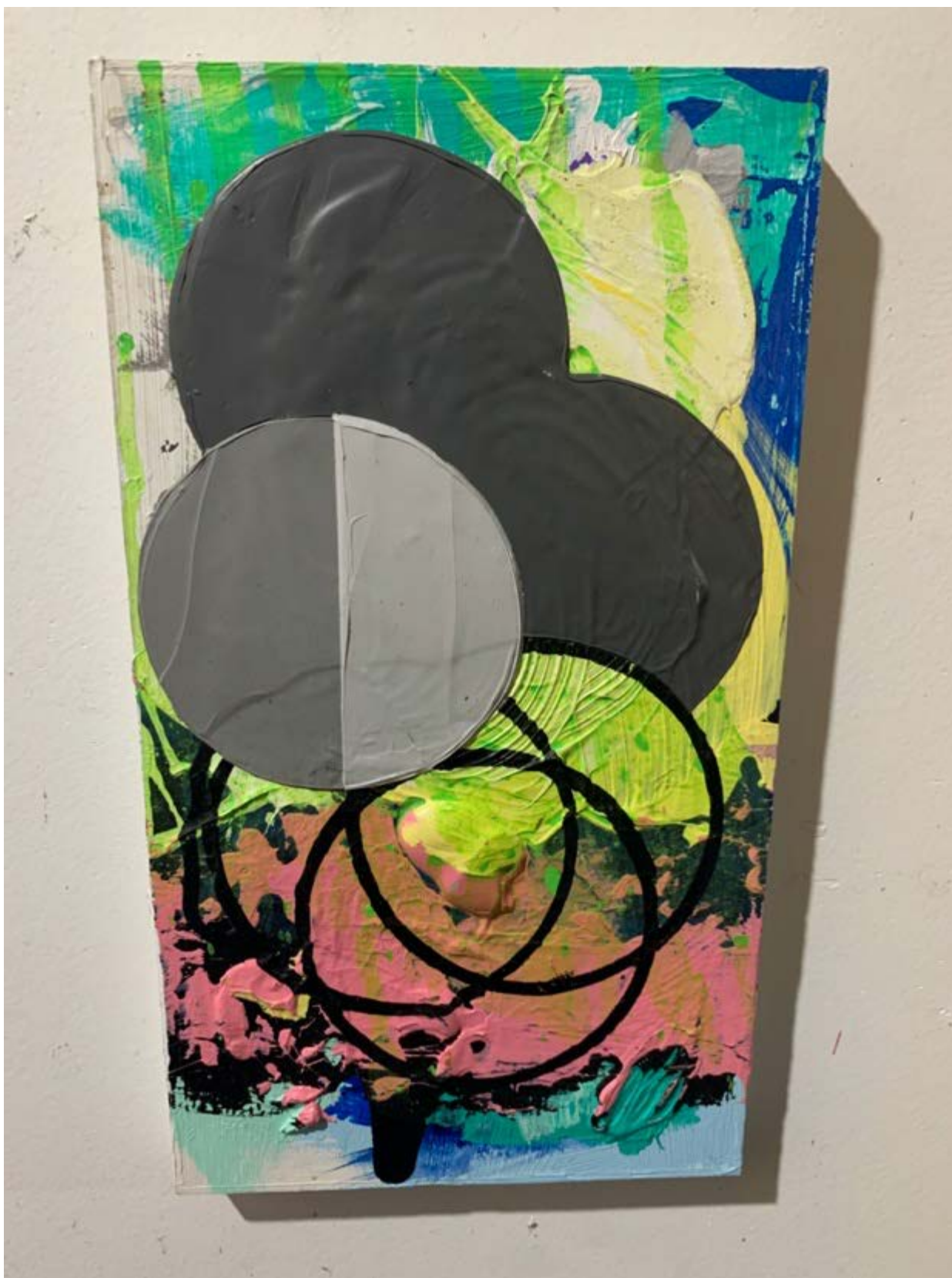
NAV

2017, mixed media on panel, 10.75 X 6.5 inches, \$300



DEK

2012, mixed media on panel, 11 X 5 inches, \$200



UNNEK

2020, mixed media on panel, 11 X 6 inches, \$400



DAOUZEK
2020, mixed media on panel, 10.75 x 6 inches, \$400



TRIZEK

2012, mixed media on panel, 11 X 7.5 inches, \$300



PEVARZEK

2016, mixed media on panel, 11 X 6.75 inches, \$200



PEMZEK

2017, mixed media on panel, 11 x 6.5 inches, 400



C'HWEZEK

2012, mixed media on panel, 11 X 6.5 inches, \$300



SEITEK

2016, mixed media on panel, 11 X 6.5 inches, \$300



TRIWECH

2012, mixed media on panel, 11 X 5.5 inches, \$300



NAONEK

2016, mixed media on panel, 11.25 X 10.5 inches, \$500



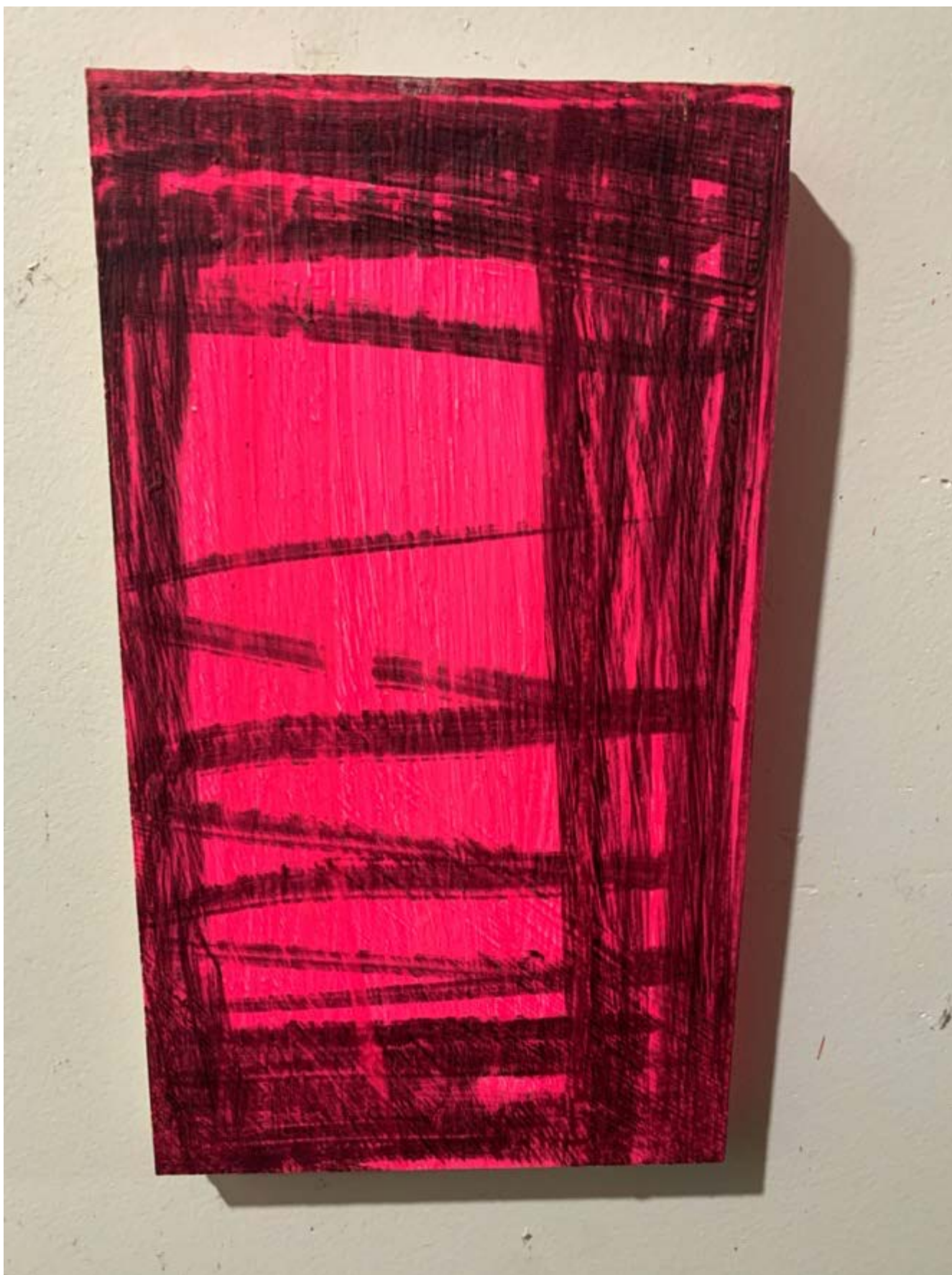
UGENT

2018, mixed media on panel, 10.5 X 6.5 inches, \$300



UNANWARNUGENT

2020, mixed media on panel, 10.5 x 5.75 inches, \$400



DAOU WARNUGENT

2013, mixed media on panel, 11 x 6.5 inches, \$200



TRIWARNUGENT

2014, mixed media on panel, 11 X 7 inches, \$400



PEVAR WARNUGENT

2015, mixed media on panel, 11 x 6.75 inches, \$300



PEMPWARNUGENT

2015, mixed media on panel, 11 X 6.5 inches, \$400



C'HWEC'HWARNUGENT

2016, mixed media on panel, 11 X 6.5 inches, \$300



SEIZH W A R N U G E N T

2013, mixed media on panel, 11 x 6.5 inches, \$200



EIZH WARNUGENT

2012, mixed media on panel, 11 X 6.75 inches, \$300



NAVWARNUGENT

2018, mixed media on panel, 11 X 5.75 inches, \$400



TREGOT

2018, mixed media on panel, 11 X 6 inches, \$400



UNANHA TREGOT

2019, mixed media on panel, 10.75 X 7 inches, \$400



DAOUHA TREGOT

2019, mixed media on panel, 10.75 x 6.5 inches, \$400



TRIHA TREGOT

2012, mixed media on panel, 11 x 6.75 inches, \$400



PEVARHA TREGOT

2015, mixed media on panel, 11 x 6.25 inches, \$300



PEMPHA TREGOT

2012, mixed media on panel, 11 X 5.5 inches, \$300



C'HWEC'HHA TREGOT

2014, mixed media on panel, 11 x 6.25 inches, \$400



SEIZHA TREGOT

2013, mixed media on panel, 11 X 6.5 inches, \$400



EIZHA TREGOT

2012, mixed media on panel, 11 x 6.5 inches, \$400



NAVHA TREGOT

2012, mixed media on panel, 11 x 6.5 inches, \$300



DAOU-UGENT

2015, mixed media on panel, 11 X 7 inches, \$400



UNANHADAOU-UGENT

2014, mixed media on panel, 11 x 6.75 inches, \$400



DAOU HA DAOU-UGENT

2013, mixed media on panel, 11 x 6 inches, \$400



TRI HADAOU-UGENT

2018, mixed media on panel, 11 X 6 inches, \$300



PEVSAR HADAOU-UGENT

2012, mixed media on panel, 8.5 x 6 inches, \$300



PEMPHA DAOU-UGENT

2012, mixed media on panel, 11 x 6.75 inches, \$400



C'HWEC'HHADAOU-UGENT

2012, mixed media on panel, 11 x 5.75 inches, \$200



SEIZHADAOU-UGENT

2012, mixed media on panel, 11 X 6 inches, \$300



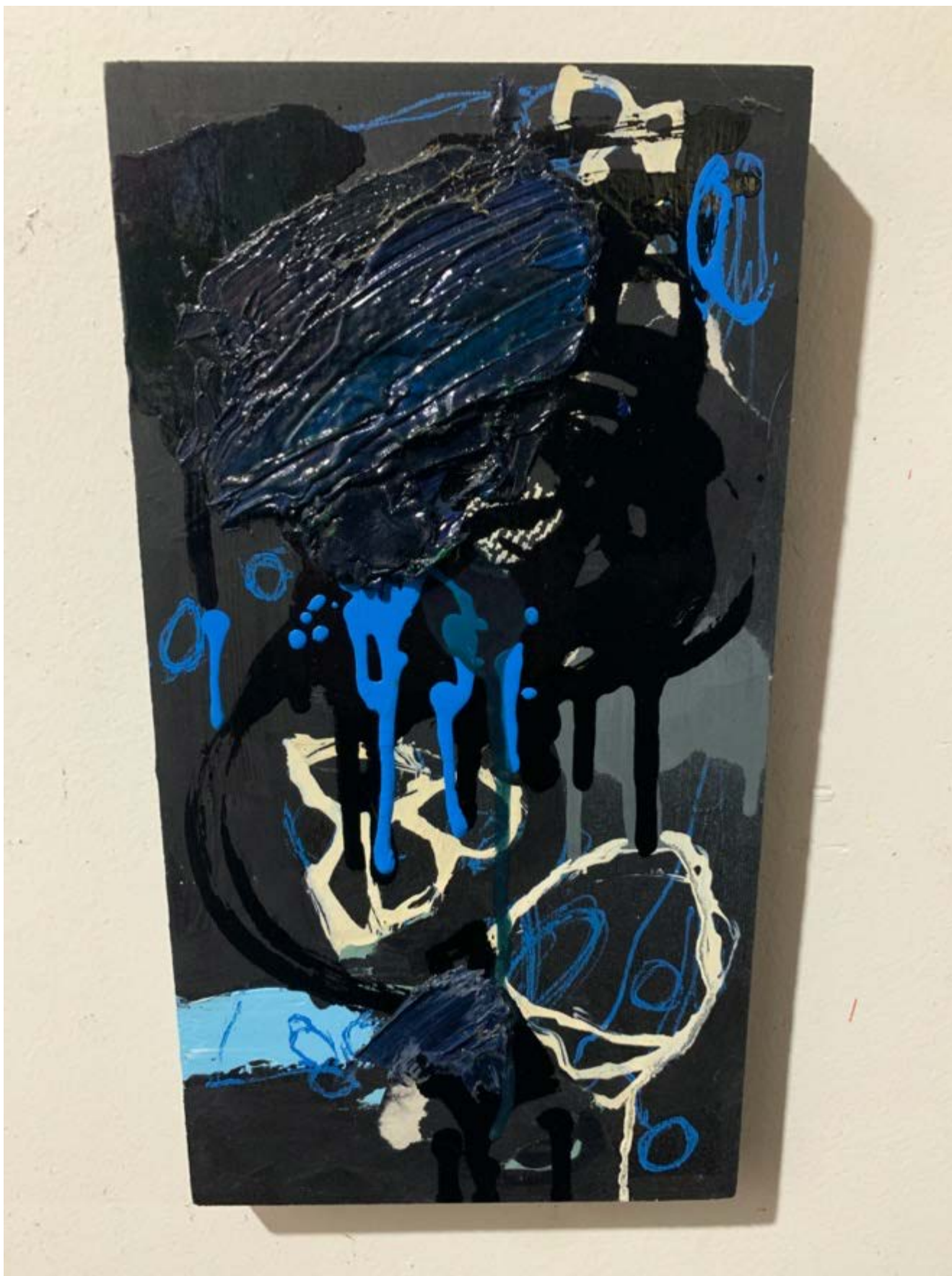
EIZHADAOU-UGENT

2012, mixed media on panel, 11 X 5.25 inches, \$200



NAVHADAOU-UGENT

2012, mixed media on panel, 11 X 6 inches, \$200



HANTER-KANT

2019, mixed media on panel, 11 x 6 inches, \$400



UNANHA HANTER-KANT

2019, mixed media on panel, 11 X 7 inches, \$500



DAOU HA HANTER-KANT

2019, mixed media on panel, 10.75 X 6 inches, \$500



TRIIHA HANTER-KANT

2021, mixed media on panel, 10.5 x 6.75 inches, \$500