





originating out of a
love for the mysterious
plasticity of metal

inspired by
architecture,
animals,
rocks,
oceans
and anything that
possesses powers
that I don't have

working within a design
philosophy steeped in
experimentation

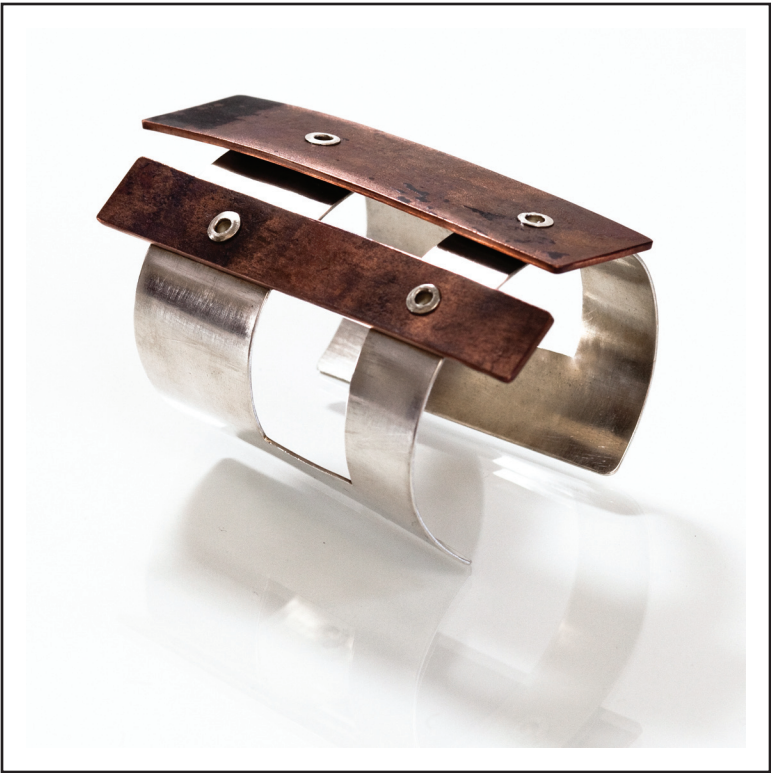
each one-of-a-kind
piece is handcrafted
in a sunny Los Angeles
studio











NINA SAVILL

jewelry designer
www.ninasavill.com
savill.nina@gmail.com

sales & media
stacyconde@aol.com

