

SANDRA WARREN GOBAR



WOMAN'S NATIONAL
DEMOCRATIC CLUB
From The Right To Vote...The Power To Lead

Exhibition dates

Friday, February 28 -Friday, May 30, 2014

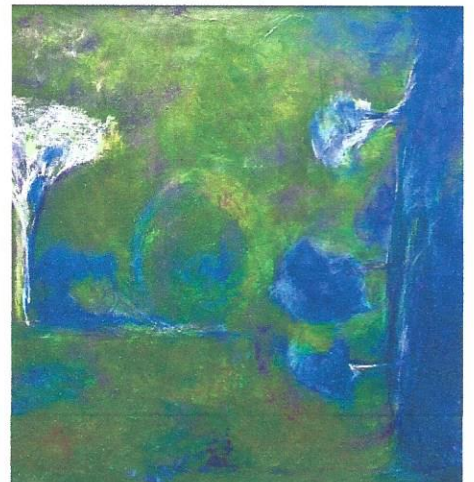
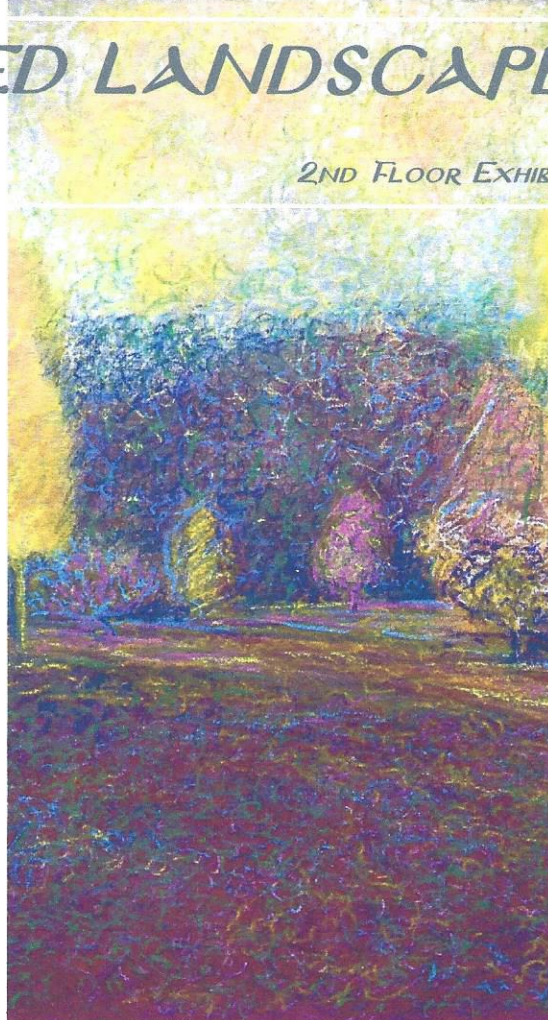
Opening reception: 6 - 8 pm

Tuesday, March 11

Hours* 9am - 5pm daily [See reverse for details]

SURFACED LANDSCAPES

2ND FLOOR EXHIBITION



WOMAN'S NATIONAL DEMOCRATIC CLUB | Spring Exhibition

SANDRA WARREN GOBAR

SURFACED LANDSCAPES
2nd Floor Exhibition



WOMAN'S NATIONAL
DEMOCRATIC CLUB
From The Right To Vote...The Power To Lead

Exhibition dates

Friday, February 28 - Friday, May 30, 2014

Opening reception: 6 - 8 pm

Tuesday, March 11

Hours 9 am - 5 pm daily

WOMEN'S NATIONAL DEMOCRATIC CLUB

1526 New Hampshire Avenue Northwest

Washington, DC 20036 [202] 232-7363

www.democraticwomen.org

Discounted parking is offered at Central Parking Garage on
New Hampshire Ave. See WNDC concierge for receipt sticker.

Sandra Warren Gobar

Smithsonian Institution Studio Arts Faculty

--Studio Art Adjunct Professor, Painter, Museum Arts Educator, Administrator, Curator & Lecturer--

www.sand-warren-gobar.com

Paintings may be commissioned for a myriad of environments!

On the front:

French Blueprints & Yellow Tree, 24" x 30"

Tree Patterns, 24" x 30"

Green Sky, 9" x 12"

No. 3, 11" x 14"

Hangul, 11" x 14"

White Tree, 24" x 30"