



PRESS RELEASE

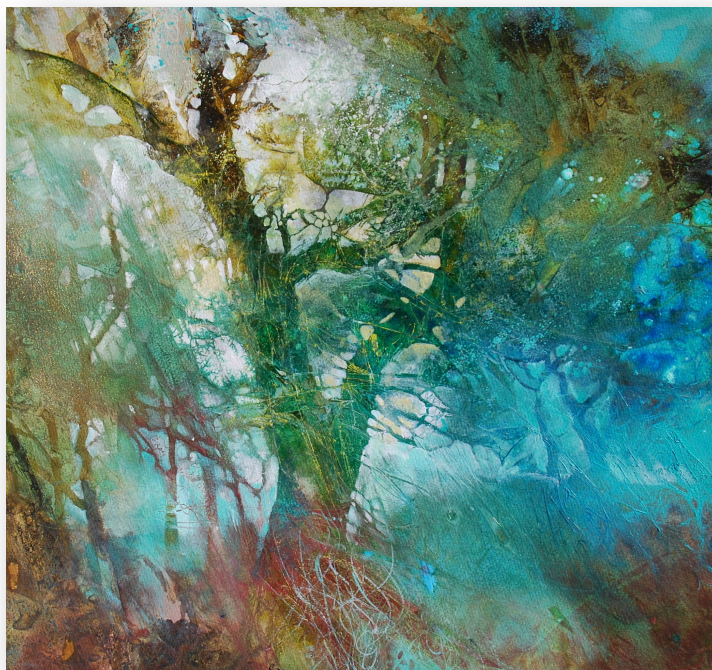
16 June 2018

# THE ARBOREALISTS

## AND OTHER PAINTERS

*Tree Studies and Landscapes seen through the eyes of 28 Fine Artists*

7 July – 4 August 2018 | John Davies Gallery | Moreton-in-Marsh



ANN BLOCKLEY RI, *Green Tree*, Watercolour, 19 x 19 ins / 48 x 48 cm

*"One word from the vernal wood can teach us more of man  
Of moral, evil and of good than all the sages can."*

William Wordsworth

The group of artists known as The Arborealists grew out of the exhibition 'Under the Greenwood: Picturing the British Tree from Constable to Kurt Jackson' which was held in the St. Barbe Museum and Art Gallery, Lymington in 2013. This significant show was staged in two parts, the first focussing on artists from the past, the second focussing on the

contemporary. The exhibition was celebrated in a superb publication of the same title produced by Sansom & Co. It contains highly informative essays by scholars of both the tree in history and art historians alike, including 'A Short and Selective Survey of the Tree in (mainly British) Art History' by Tim Craven, Curator of Southampton City Art Gallery (2002-08).

Tim stood down in 2008 to concentrate on his own painting and founded The Arborealists in 2013 with strong support from other noted artists such as Philippa Beale and Dr Angela Summerfield. A second publication, 'The Arborealists - The Art of the Tree' was also published by Sansom & Co to accompany the exhibition of the same name, again staged at the St. Barbe Museum and Art Gallery in 2016. Featuring some 35 artists, this loose group has now grown to 60 members. It has been labelled one of the most significant artist's groups to have been formed in Britain in the 21st Century.

This exhibition, 'The Arborealists and Other Painters' features 21 members of the group plus a further seven top artists introduced to the group by The John Davies Gallery. Most artists are showing more than one work each, resulting in a magnificent and diverse collection well in excess of 75 works celebrating the tree in the British landscape.

Gallery Director, John Davies said "These are paintings to truly contemplate. They are works of art that can slow us down. Each artist has given their all mentally and technically to achieving these fine exhibits. I hope that this will be one of the most absorbing exhibitions that we have ever staged at the gallery."

## **Artists**

**Members of The Arborealists:** Mary Anne Aytoun-Ellis, Richard Bavin, Philippa Beale, Ann Blockley, Karen Bowers, Claire Cansick, Stella Carr, Lara Cobden, Tim Craven, Annabel Cullen, Simon Dorell, Paul Finn, Kerry Harding, Mike Holcroft, Natasha Lien, Fiona McIntyre, Wladyslaw Mirecki, Michael Porter, Nick Schlee, Lesley Slight, and Jacqui Wedlake-Hatton.

**Guest Artists:** Sarah Bee, Miriam Escofet, Carla Groppi, John Pearce, Fred Schley, Richard Thorn and David Tress.

Paintings range in size from small and below £1,000 to very large and in excess of £20,000. A 64-page fully illustrated colour catalogue is also available at £20 incl. p&p.

## **The Arborealists and Other Painters**

7 July-4 August 2018

The John Davies Gallery, The Old Dairy Plant, Fosseway Business Park

Moreton-in-Marsh, Gloucestershire GL56 9NQ

Telephone: 01608 652255

Email: [gallery@johndaviesgallery.com](mailto:gallery@johndaviesgallery.com)

Open: Monday - Saturday 10am - 5pm

Facebook: @JohnDaviesGallery Instagram: @JohnDaviesGallery Twitter: @JohnDaviesGall

**PRIVATE VIEW: Saturday 7 July 11am-5pm, Sunday 8 July 11am-3pm**

*Fizz and Canapes 12noon-2.30pm*

Complimentary copies of the catalogue are available to press by request. High res. images.

Please contact Jessica.

PRESS CONTACT: Jessica Wood [jessica@artsmediacontacts.co.uk](mailto:jessica@artsmediacontacts.co.uk) 07939 226988