

Bridget Seaton – ARTIST NEWSLETTER – October 2021

WHAT'S BEEN HAPPENING IN THE STUDIO

PRINTMAKING

I have dedicated most of my time in the past few months to painting however I have purchased an exciting addition to my studio in the form of an old but solid etching press. This will enable me to pursue my printmaking in different directions and will mean that I will no longer have to burnish my monotype prints by hand. As the weather warms up it becomes increasingly difficult to paint with acrylics in my studio but working with oil based printing inks is not a problem in the heat so I am looking forward to using my new toy very soon.



PAINTING

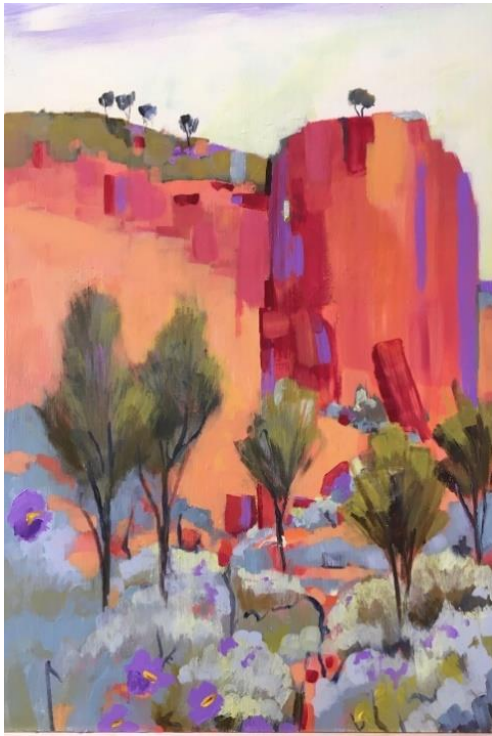
I have been doing plenty of plein air painting my sketchbook. Most of my studies of the bush are done from a low vantage point whilst sitting directly on the ground or in my low camping chair – at this level I am often immersed in the undergrowth which adds to the challenge of how much chaotic vegetation to include and what to leave out. With the abundance of wildflowers this year I have had the pleasure of sitting right amongst the flowers and my paintings have taken on a more colourful twist.

In July I visited & climbed a bluff in the Murchison district, and this gave me plenty of ideas. First I painted on location, then at home I worked from my sketchbook, memories and photos to paint 'Winter Flowers on the Bluff' – depicting the plateau with its masses of flowering bushes. After that I took a different approach and made some more abstract pieces that drew on my memory of climbing and exploring the bluff. See "*This Way Up Amongst The Flowers*". This painting aims to contain numerous memories of place rather than one view, I have tried not to worry about things making sense and have played around with heightened colour and shifting views. Its amazing how one walk can fuel lots of ideas.



Left -*Winter Flowers on the Bluff*
(Acrylic on canvas)

I took part in the Bungendore (Armadale) ART IN THE PARK PAINT OUT in late September, an event organised by Bungendore Park Environmental Group & a good opportunity for some plein air painting with hot drinks and a porter loo nearby! I hung some paintings in East Fremantle Primary Schools annual fundraising ARTEX and was pleased to sell 2 paintings. Good for the school as they receive the commission and good for the artists as they get to display and sell.



This Way Up Amongst The Flowers
(Acrylic on board)



Untitled for now (Acrylic on canvas)

EXHIBITIONS/EVENTS

Bodies of Work – Print Makers Association of WA

Members exhibition 'Bodies of Work' is due to open on 25th November at the Moores Gallery in Fremantle. I have applied for 3 metres of wall space and if selected will have 6 of my monotype prints (from my Coastal Melaleuca series) on display. They hire out the entire gallery and there is always lots of diverse work to see from different printmakers.

Melville Art Awards 2021

I was pleased to be selected to be part of exhibition this year with my painting "Winter Flowers on the Bluff". The opening night is on the 22nd October at Wireless Hill and the exhibition will be on until the 12th November.

BUSH TRAVELS

Over the past couple of months I have done a fair bit of travelling chasing the wildflowers across the state. We spent some time just south of Paynes Find in a reserve and were delighted to finally see the everlastings in bloom. Every year we try to see them but are either too late or too early and with the good rains this year it was really special to see. I made several paintings in my sketchbook whilst there and have scaled them up into larger acrylic paintings. We also visited the great Southern region and managed to get well off the beaten track and explore some of the granite peaks that rise up above the woodlands – it was very cold and windy but worth the drive. We also went further south to revisit Fitzgerald River National Park. At the moment the inlets are full of water and the park is looking very green. The flowers are out and I took plenty of close up photos to use as resources for my upcoming workshop *Native Plants in Monotype*. Hamersley Inlet (which is situated to the east of the park) was almost completely dry last Christmas and we were pleasantly surprised to see it full again and replenished by all the rain. Earlier this year I completed a series of paintings in response to the stark beauty of the dry inlet, this time round I just enjoyed the watery views (painting water is not my strong point). See next page for a picture of the inlet before (Dec 2020) and after the rain (Sept 2021).

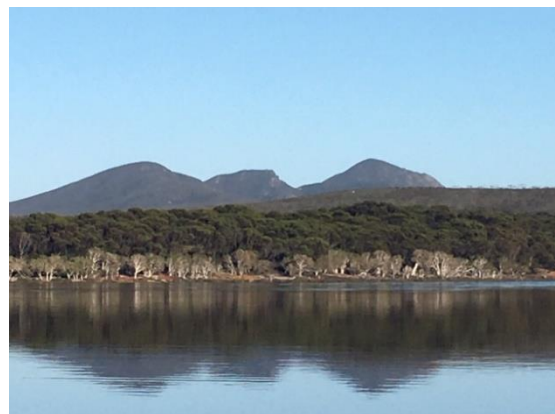
SKETCHBOOK PLEIN AIR PAINTINGS & SOME PHOTOS FROM MY RECENT CAMPING TRIP IN THE FITZGERALD RIVER NATIONAL PARK AND GREAT SOUTHERN REGION



Above clockwise: granite Peak from below/ patch of bush / cold view from a granite peak/ Me at a viewpoint



Above left – Hammersley inlet Dec 2020



Above – Hammersley Inlet – Sept 2021

WORKSHOPS/CLASSES

Below are details of some of the classes/workshops I am running. I have included some links and flyers in my email.



Printing Course



Printing Workshop



Painting Workshop

REGULAR CLASSES

Term 4 Expressive Landscapes Painting Class

Tuesdays 9 – 11:30am, starts 12th October at Atwell Art Centre (10 weeks) (few spots left)

For Bookings: contact Atwell Arts Centre [\(08\) 9330 2800](tel:0893302800)

Printmaking short course – Monotype in Multi form

Friday 5th November – Friday 26th November at Canning Arts Group. 12:30-3.00pm

Monotype is a spontaneous printing method, no cutting is involved, rather ink is manipulated on smooth surfaces resulting in one off impressions. Explore painterly mark making, delicate linework and create beautiful shapes and edges with paper and plant transfers. Combine methods to create unique multilayered prints. For Bookings: contact Canning Arts Group [\(08\) 9457 9600](tel:0894579600)

WORKSHOPS

Sgraffito in the Landscape – Acrylic Painting Workshop –

Wednesday 10th November 10-3.30 at Atwell Arts Centre

Sgraffito means 'to scratch back to reveal an under layer'. Learn some tricks and techniques of the method and how it can be applied to landscape painting. Experiment with colour, mark-making and mediums, then complete a small landscape painting on primed board using reference images from the West Australian bush for inspiration –. For Bookings: contact Atwell Arts Centre [\(08\) 9330 2800](tel:0893302800)

Printmaking Workshop – Native Plants in Monotype

Saturday 6th November 10am – 4pm at The Glyde-In Community Centre, East Fremantle.

Celebrate the textures and forms of our native plants through combining the printing technique of monotype and cut paper collage. Play with form and composition to produce a sophisticated and decorative cut paper collage from print experimentations. For bookings contact me on bridgetseaton@outlook.com or click on the Eventbrite link in the email.

Printmaking Workshop in December at Atwell Art Centre – Collagraphs – more information coming soon on the Atwell Arts Centre website.