

Bridget Seaton - Artists Newsletter - Spring 2024



Hello and welcome to the spring edition of my **newsletter**. You are receiving this **newsletter** as you have subscribed at an art class or event.

Studio time is always precious and combined with teaching, family visits and general life I never seem to have as much studio time as I imagine. Usually I go away camping over spring break but this time I stayed at home and have been relishing the down time to just potter around in my studio sharpening pencils etc. and also getting some actual painting done.

What's been happening in the studio?





In August I had family visit from the UK and had the pleasure of spending time with my sister and her kids in my studio - here are my nephew and niece doing some printmaking in response to the native plants in my garden. I have been thinking lately about my creative process and realizing that the discovery and investigation of new ideas is the most enjoyable part.

I enjoy creating new projects for the kids art classes I run. Recently I spent a happy day constructing a paper beetle, there was a lot of problem solving and decision making and once a shoddy prototype had been made I refined my process and created a sculpture that I was happy with. This creative process and discovery of new ideas through trial and error is something I foster in my art practice. It is how I work best and explains why I prefer not to plan a painting. Yes, I do studies and have a rough idea of my colour palette/subject but I like to throw myself headlong into a blank canvas and resolve problems as I go. It is the resolving and the unplanned elements that arise that give me the most satisfaction. There are always moments of frustration but if I knew exactly what I was doing and how the painting would turn out then perhaps I wouldn't enjoy the ride so much.

Recently I have been working on a number of paintings inspired by paperbark swamps. I visited Manning Park on numerous occasions making studies of the paperbark trees that fringe the lake, a chaotic scene of fallen branches, grasses, shaggy tree trunks and reflections. The reflections mesmerized me but posed a difficult subject. I did my best when outside but

when back in the studio decided to paint from memory and simplify things - disregarding direct representation I tried to concentrate on the act of painting itself, the marks, colour relationships and the general feeling of swampiness. I'm still playing with the relationship between saturated hues of blue next to muted earthy tones, a reference to clear skies and how the sun bleaches and softens the colours of this often sunburnt land.

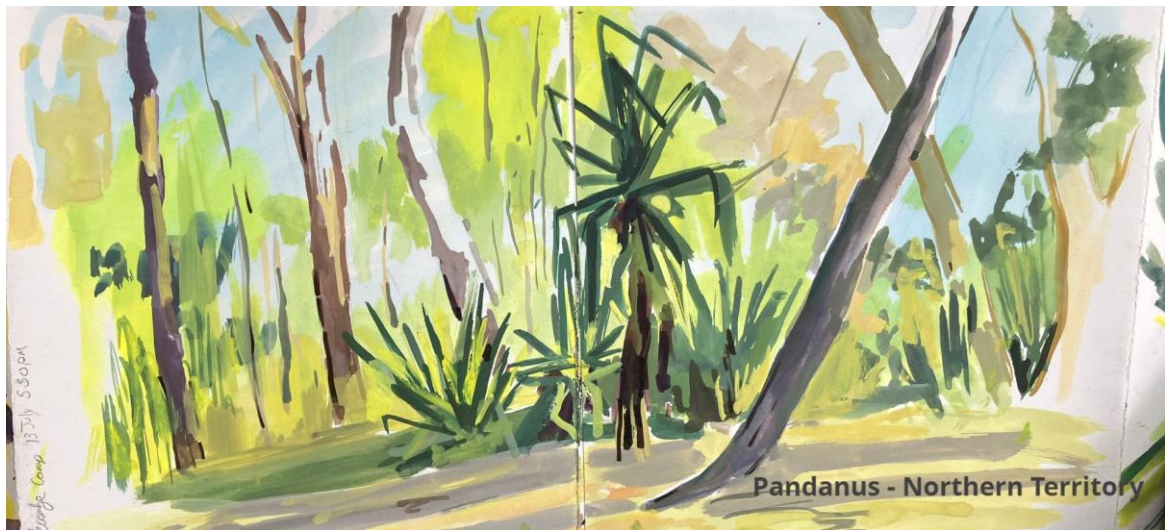


Bush Travels

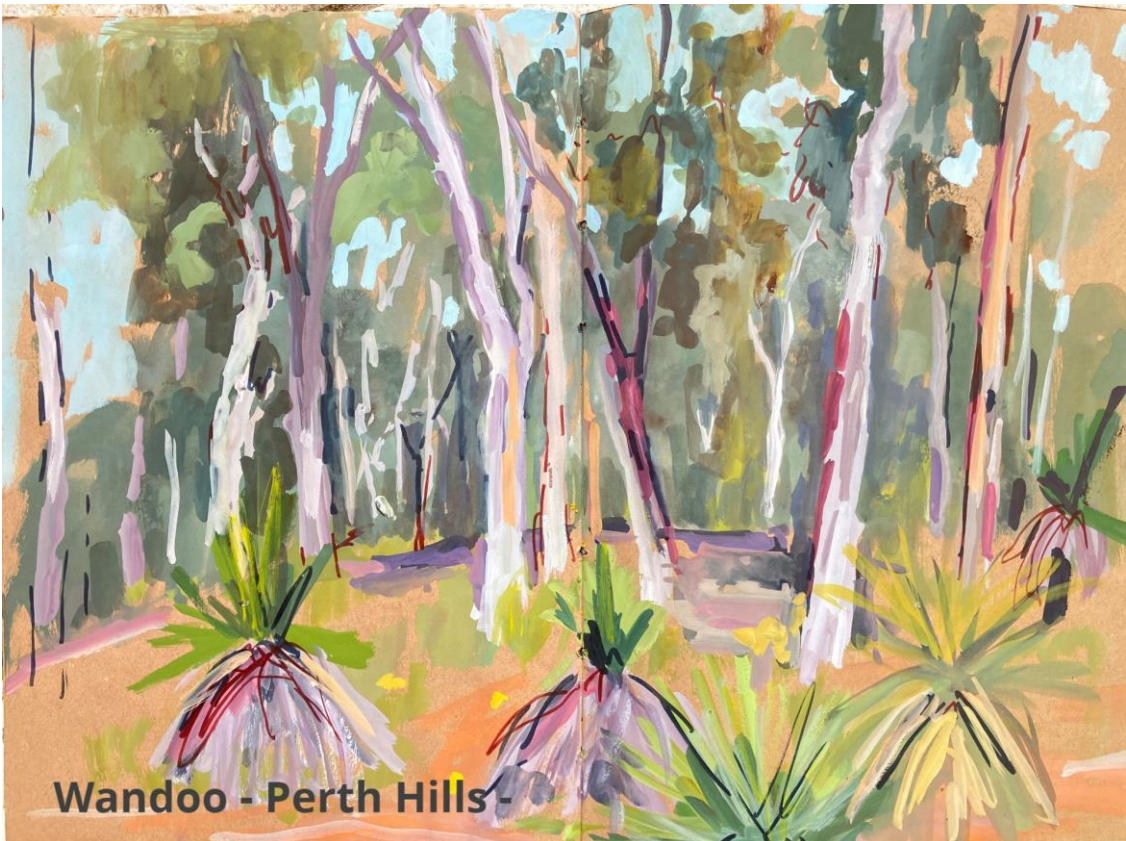
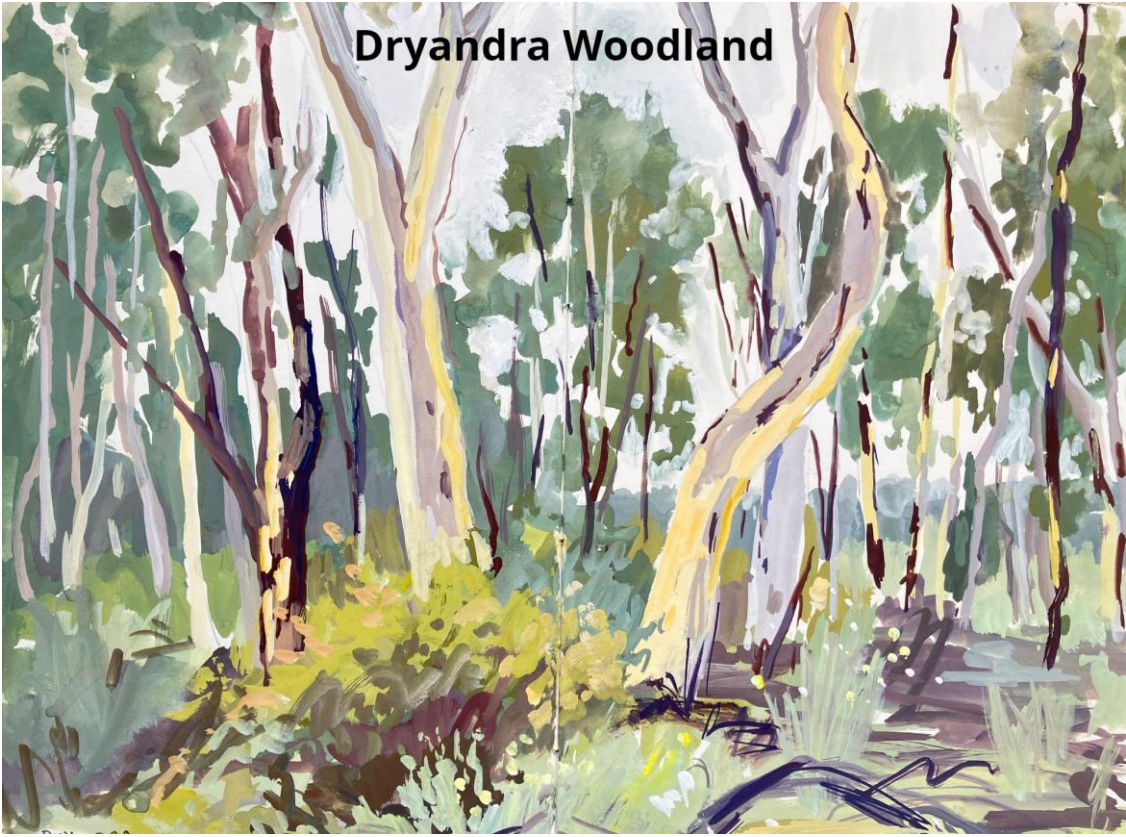
In July I went on a long anticipated trip to the Northern Territory to walk the Jatbula trail near Katherine Gorge. I did part of this 60km hike 25 years ago and was excited to retrace my footsteps. I took my sketchbook, gouache paints, 6 nights of dehydrated meals and set off with my partner Sebastien. The walk was beautiful and the camp spots idyllic, set amongst waterfalls and billabongs. Was I inspired to paint? Yes and no, it was almost too picturesque to paint with gushing waterfalls, red rocks and tropical vegetation. I found myself searching for the subtle greys of the West Australian bush and it dawned on me that as a visual artist I am very much tied to place now in the Southwest of WA.

I struggled painting the rocks but had fun painting the Pandanus plants. We had a great trip which ended on a dramatic note when we got helicoptered out due to a fast approaching bushfire. Luckily we only had 4 km to go and the park rangers had our names on file. Getting a chopper ride was a bit of a thrill and the land certainly looked different from the air.

Below are some of my plein air efforts from my sketchbooks, both from the Territory and recent bushwalks not far from Perth - all are gouache on paper with a bit of marker pen.



Dryandra Woodland



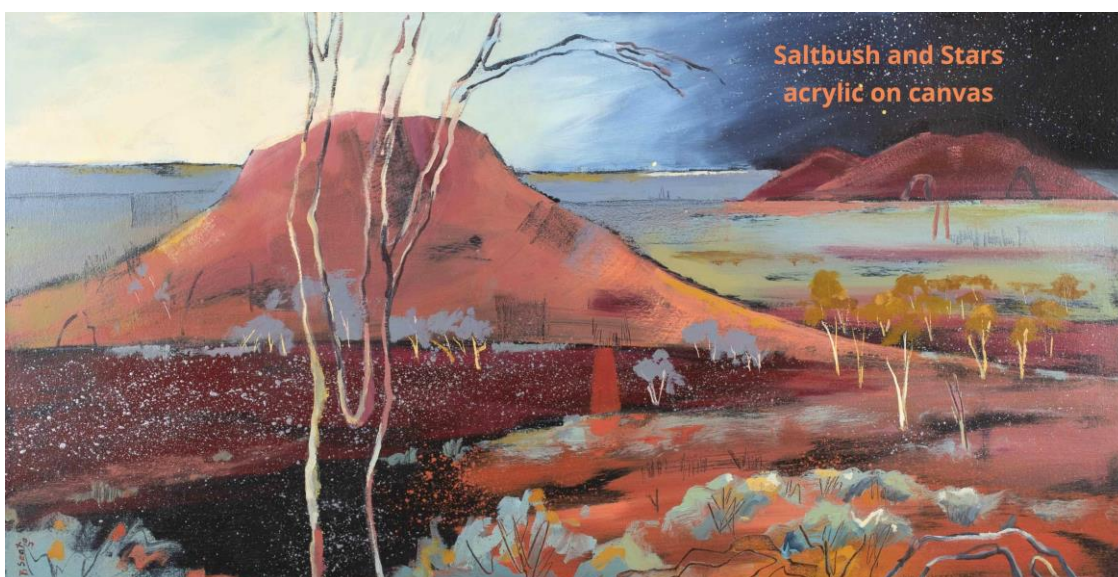
Wandoo - Perth Hills -

EXHIBITIONS/EVENTS

Art shows always seem to come at once and its all happening in November. I have work in the following 3 exhibitions

Melville Art Awards 4 October - 1 November

This year I am a finalist in Melville Art Awards with my acrylic painting *Saltbush and Stars*. This annual exhibition held at Wireless Hill Museum will display artwork from about 100 West Australian **Artists**. Opening night and awards presentation is Friday 8 November 6pm. All work is for sale.



Printmakers Association of WA Members Exhibition 9 -24 November

Each year PAWA (Printmakers Association of WA) have a members exhibition but this year is a special one as it celebrates 50 years of the association. The theme for this Golden Gala exhibition is golden. I have entered a print into the exhibition which will showcase work from over 200 members. Held at the Moores Building in Fremantle It promises to be a big event. Opening night is Saturday 9 November at 6pm.

ARTEX 27 November - one night only

ARTEX is a fundraiser exhibition for East Fremantle Primary School held at The Assembly Yard (19 Montreal Street Fremantle). Organised and curated by the parents and citizens association and held roughly every 3 years this exhibition displays bodies of work by selected local **artists** as well as students in the school. I will be displaying a group of my original prints based on tree forms.

SOME OTHER EXHIBITIONS/OPEN STUDIOS ON IN PERTH

ARTROOMS - Kalamunda Open Studios 12/13 October

NATURE OF BEING - Elis Art Centre 26 Sept - 13 October

CHANGING PERSPECTIVES Jan Purser & Annemie Van Osch - Terrace Greenhouse Gallery 28 October - 3 November

MUNDARING HILLS OPEN STUDIOS 19 - 27 October

Classes and Workshops

15% voucher give away I am offering subscribers to my **newsletter** the chance to win a 15% discount for any of my adult workshops or classes until April 2025*. How does this work? Simply reply to this email - saying that you would like to be in the draw to win. I will draw a name out of a hat and send the winner a promo code to use on my Eventbrite booking page. *applicable to Eventbrite classes only.

Click the coloured buttons below for bookings and more info on classes.

TERM 4 EXPRESSIVE LANDSCAPES PAINTING CLASS

Tuesdays 9-11:30am 5 WEEKS 16th - 27th Feb @ Atwell House, Alfred Cove

This regular Tuesday class explores concepts of landscape painting with experimental exercises demos and guidance. Colour mixing, mark making, brushwork and more. CLASS IS FULL BUT YOU CAN JOIN THE WAIT LIST [HERE](#)



TERM 4 EXPERIMENTAL PRINTMAKING - MONOTYPE

Experimental printmaking returns in term 4 for 4 weeks. This term we will be exploring the immediate and tactile process of monotype. Monotype is a method where you apply printing ink onto Perspex and manipulate it in interesting ways. The image is then transferred from Perspex onto paper. A great technique for both new and seasoned printmakers. More info in the [booking link](#).



BOOKBINDING WORKSHOP - SATURDAY 30 NOVEMBER

Spend the day creating two A5 books from scratch, perfect for those special Christmas gifts or your own personal diaries. In this workshop which is held at the charming Glyde-In Community Centre in East Fremantle you get to make a leather journal and a hand marbled notebook. (If you have made a leather journal with me before I am teaching a new stitching method). We will be marbling by hand using professional marbling inks and experimenting with a few techniques. All materials are provided plus morning tea. Bookings and more info on [Eventbrite](#).



SUMMER SCHOOL - I will be running a few workshops over the Summer break in mid January. Keep an eye out on Facebook or the Melville City Council webpage for more info on what classes will be running at [Atwell House](#).

Thanks for taking the time to read my [newsletter](#), as always email is the best way to get in touch with me. If you wish to unsubscribe then just press the unsubscribe link below.



[View email in browser](#)

[update your preferences](#) or [unsubscribe](#)

