

Bridget Seaton - NEWSLETTER – January 2021

WHAT'S BEEN HAPPENING IN THE STUDIO

After completing 5 days walk on the Bibbulmun track in the Walpole region in September I had plenty of inspiration to keep me going for a few months. I was particularly struck by the regeneration of the area following the 2015 fires as well as the open expanse of the Pingerup Plains. All my work over the last few months has stemmed from this trip. As well as some acrylic paintings I have made some oil-based monotype prints to illustrate the majesty and resilience of some of the ancient Jarrah trees as they stubbornly recover from fire. This was a 2-colour print and quite tricky as I had to place my piece of inked up Perspex onto the paper twice. As usual with this method of printmaking I work into the print by hand once it is 'pulled' I did this by smudging the ink with my fingers and adding a bit of printed collage – I can't seem to be able to just make a print and leave it, I have to get in there with my hands and make alterations.

Revisiting past paintings

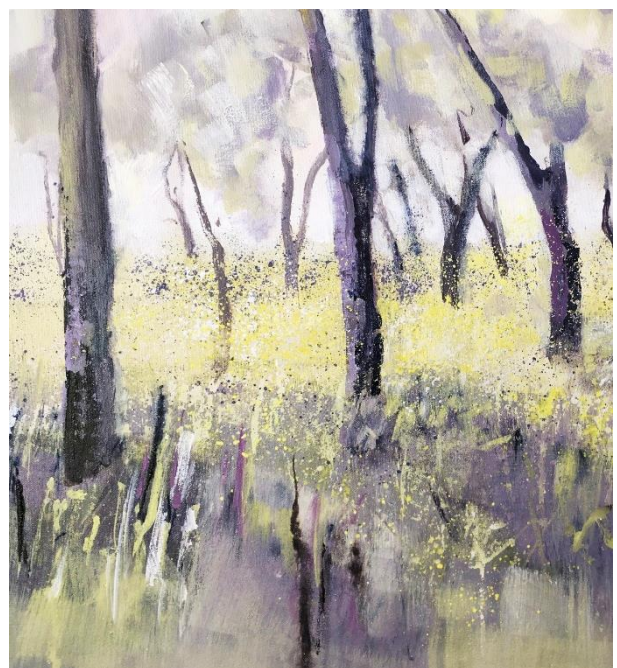
Sometimes I struggle with a painting and get so sick of it that I have to put it away for a while and either resign myself to it being painted over or perhaps I will give it another chance down the track. Last week I had a look at some paintings I had abandoned a few months ago and worked back into them. It's amazing how looking at things with fresh eyes can help. Some artists discard a large percentage of their work and I have accepted that failures and imperfect work is all part of the process.

Preparing for an exhibition

As well as creating art I have been preparing for a group exhibition which is coming up in February at the Moore's gallery. There are 5 of us participating and the first time that I will exhibit a substantial amount of my work. I plan to display about 24 pieces that I have been working on over the past 18 months. Recently I have been working behind the scenes on all the other things that need to be done, such as framing, making labels, planning the opening night, painting the sides of my canvases white, marketing, putting hooks on the back of paintings etc, etc, etc. It has been quite an eyeopener to me that making the artwork is only just one part of what needs to be done when exhibiting. The flyers are nearly ready, and I will send you all an invite once they are done.



'Survivor Jarrah' Monotype



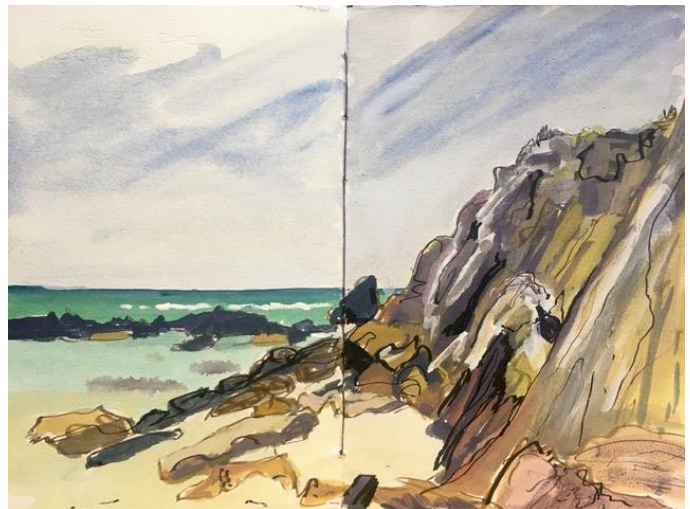
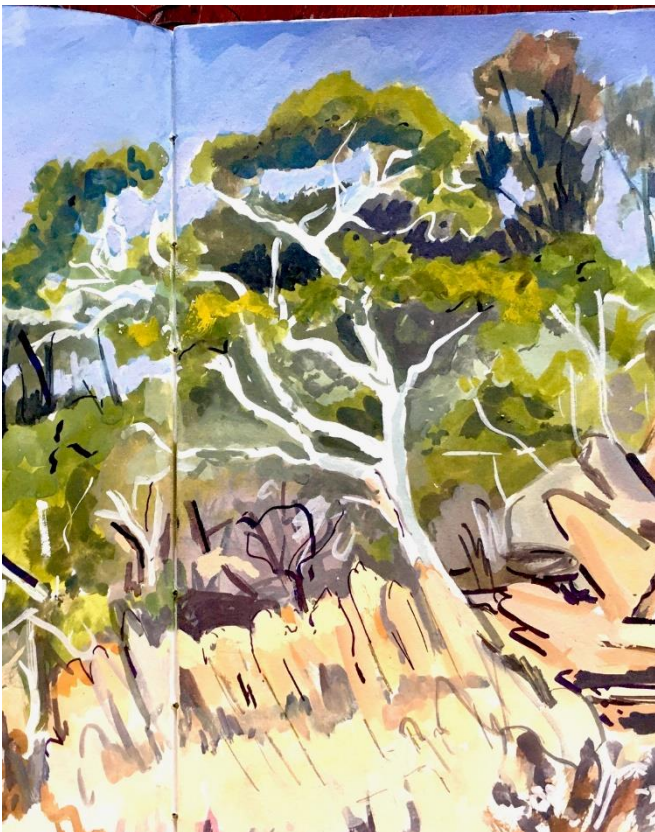
"Pingerup Plains, Morning" (detail) Acrylic

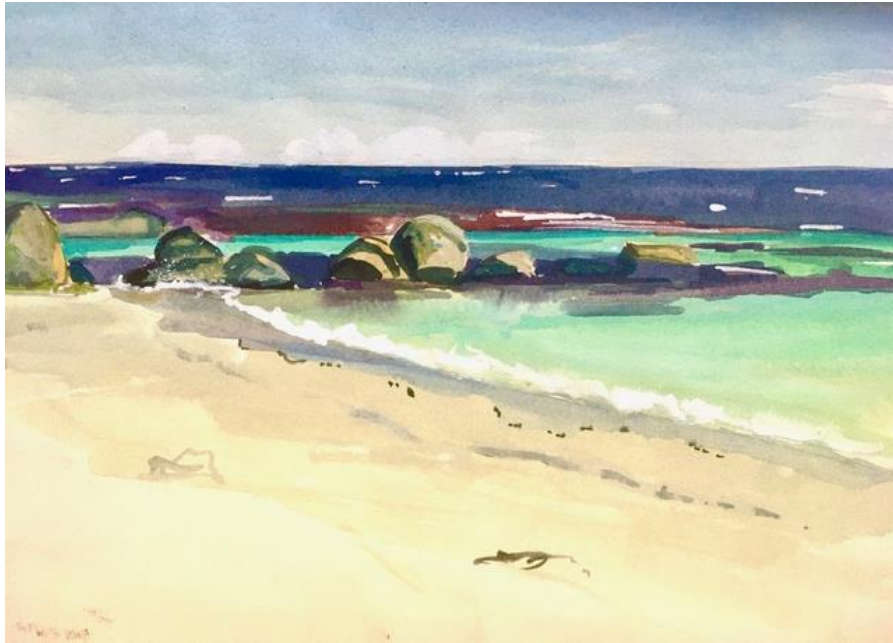
BUSH TRAVELS

I was lucky enough to spend 2 weeks on the south coast over the Christmas break. We left before Christmas to escape the crowds and spent time in Fitzgerald River National Park near Hopetoun. As ever the scenery was spectacular and rather windy. I am not a beach painter, but I did have a real go at it on holiday as we were camping right on the coast. I painted in my sketchbook everyday whilst and had a go at painting rocks and sea. I find this a rather tricky subject and it gave me a new respect for those who paint the ocean. The beach is beautiful but it's not really my passion when it comes to painting, I spent some time in Hammersley inlet and found that much more inspiring.

Sadly due to lack of rain and a closed sand bar Hammersley Inlet has all but dried up to a salt lake, this was quite a shock to me as I had visited 2 years ago and seen it full of water. Once I got over my initial shock I was able to appreciate the petrified beauty of the place. The once blue water had mostly dried to a shimmering salt pan and any remaining water had turned a dusky pink. The inlet was in poor health, but it was showing a different set of colours that were beautiful in themselves. As the inlet was dry we were able to walk upstream to discover gorges that are normally only accessible by kayak. The place was eerily beautiful, numerous fish skeletons were strewn on the sand and once submerged rocks were visible revealing incredible textures and patterns. It was devastatingly beautiful and there was no one else in sight except for a few eagles. My walk upstream through the dry inlet left a profound impression on me and I took hundreds of photos and managed to do a couple of paintings on location. I collected a couple of sticks and stones to help me with my colour palette and I am hoping to make a series of paintings inspired by my visit.

Some *plein air* paintings from my holiday





Hammersley Inlet – now a salt lake

WORKSHOPS/CLASSES

REGULAR CLASSES

Term 1 Expressive Landscapes Painting Class

Tuesdays 9 – 11:30am, starts 2nd February at Atwell Art Centre.

2 Colour Lino Printing - 4-week printmaking course

Friday 5th – Friday 26th March at Canning Arts Group. 12:30-3.00pm

WORKSHOPS

Landscapes of the Mind – a mixed media workshop working with process and imagination

Atwell Art Centre – Sat 16th and Sun 17th January 10-3.30

UPCOMING EXHIBITION

'Grounded' exhibition show casing how the landscape of WA influences the creative view of five Perth artists.
Friday 19th February – Sunday 7th March at The Moores Gallery, Fremantle.

AN ART QUOTE TO FINISH "Painting is just another way of keeping a diary." Pablo Picasso