

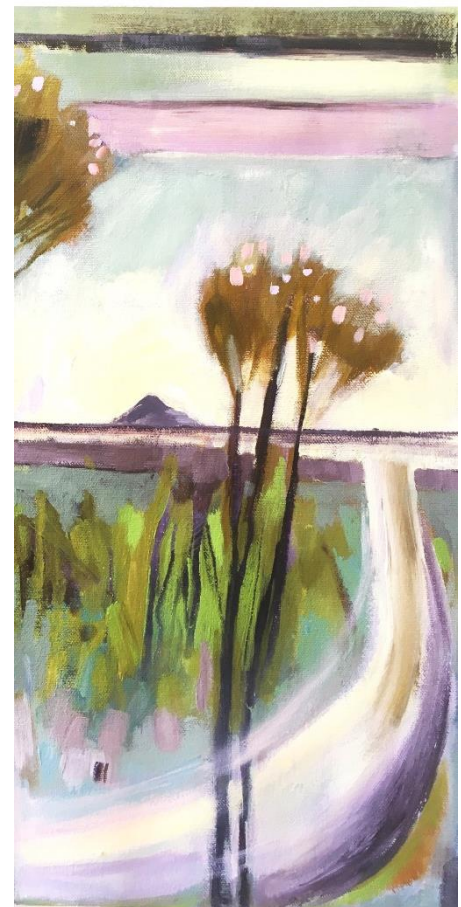
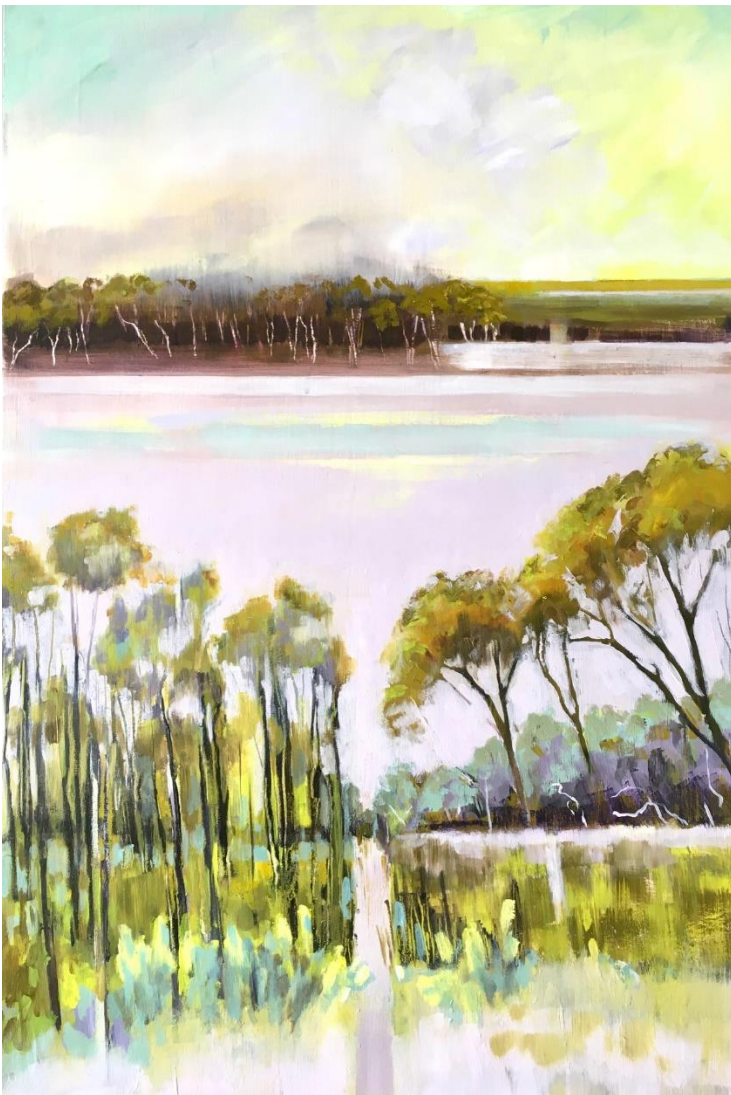
Bridget Seaton – ARTIST NEWSLETTER – January 2022

Happy new year and welcome to my January newsletter. My Christmas break is over and I am now back in the studio and making plans for the year ahead. 2021 was a good year for me and I managed to exhibit and sell quite a bit of work. Thanks to everyone who purchased an artwork, or came to see my work. Getting my work out of my studio and into the world makes it all worth it. I hope to keep the momentum up .

WHAT'S BEEN HAPPENING IN THE STUDIO

PAINTING

For the past couple of months I have been painting in response to my September road trip. It takes a while to get things out of my system and in December I wrapped up a series inspired by the salt lakes and bush near Salmon Gums (Esperance/Goldfields region). I have been working in a slightly abstract way trying to paint multiple memories of place and different vantage points on the same canvas as opposed to a static view. Its proving tricky but it's the direction that I want to pursue at the moment. An example of this is one morning we went walking on old sand tracks to try and find a salt lake that we had glimpsed from the top of a granite outcrop. We walked through thickets of mallee, passed old trees, got caught in a rainstorm and then saw the sun shining on wet wildflowers before arriving at the salt lake which afforded expansive views. Sometimes when I paint about place I am remembering many things and try to piece it all together in a coherent montage using paint as a vehicle for my memories. See my painting below from my recent 'Finding salt Lakes' series which illustrates this shift in my work.



Left: *Finding Salt Lakes* 90 x 60cm
(acrylic on board)

Above: detail of a different painting

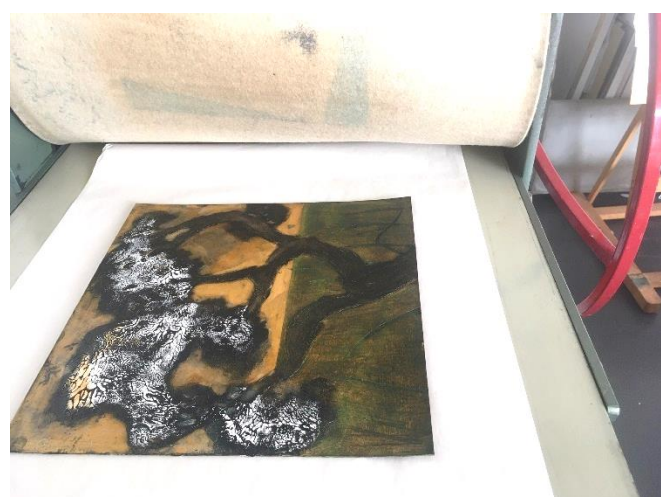
EXHIBITIONS AND EVENTS

In December I was selected to hang 6 of my prints in the 'Bodies of Work' exhibition (Printmakers Association of WA). I was very happy to sell a couple of pieces and thanks to everyone who came and had a look. 2022 is shaping up to be a busy year. So far, I have two exhibitions lined up - with a solo show in a regional Wheatbelt town in April and a collaborative show in May at the Earlyworks Gallery in South Fremantle.

PRINTMAKING

I am currently exploring the printmaking technique of collagraphy and have plans for some larger mixed technique prints now that I have my large printing press in action. I am also using more colour in my prints thanks to my discovery of Sakura printing inks. This year I will offering extra printmaking classes and workshops and I am excited to announce that I am running a new termly short course at **Melville Arts at Atwell House**. The course is called ***Expressive Landscapes – Printmaking*** and runs in the last 4 weeks of every term. This will be a fun and experimental class where I teach one or two methods of printmaking each term, using natural forms & landscape as a springboard for inspiration. Printmaking does involve lots of equipment, but I have many tools and a small press so almost everything is provided including the inks. (BYO paper). I'm also running 3 printing workshops for various summer school programmes in mid January. See details at end of the newsletter and the links in the email.

Below left – inked up collagraph plate on the press



Below right – one of the prints

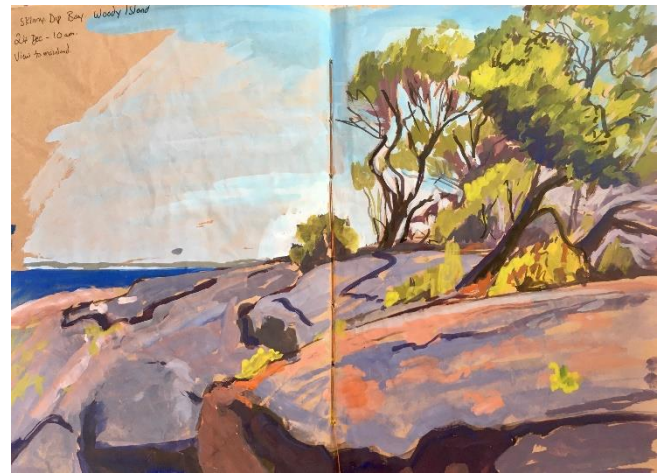


BUSH TRAVELS

I have just returned from a two week break in the Esperance region and spent time in both Cape Arid and Cape Le Grand National parks. We were blessed with 28 degrees and sunshine every day and managed to avoid the nasty heat wave over Christmas. We did however have gale force afternoon winds to contend with but that's just all part of beach camping I guess. The flowers were fantastic at Cape Arid, and I saw swathes of Showy Banksia (*Banksia speciosa*) in full bloom hugging the coastline. I managed to paint in my sketchbook nearly every day and subjects ranged from the beach, close ups of banksia plants, views of granite peaks and my old favourites; the coastal paperbark trees. Painting plein-air in the summer is much harder than in winter. My gouache paint keeps on drying out and then there are the flies and persistent sunshine to deal with. I need to brush up on my drawing skills so that I can make quick sketches in dry medium rather than getting in a mess with sand and sun-baked paint. For two weeks I saw so many beautiful beaches, but inspiration lies in the forest, scrub and woodlands for me. I took particular notice of the regenerating burnt areas, the grass lands, coastal swamps with paperbark trees and gnarly old Christmas trees (*Nuytsia floribunda*). I'm sure these things will work their way into my work sooner or later.

PLEIN AIR PAINTINGS FROM MY RECENT TRIP

GOUACHE AND MARKER ON VARIOUS PAPERS IN MY SKETCHBOOK



WORKSHOPS/CLASSES

REGULAR CLASSES

EXPRESSIVE LANDSCAPES - PAINTING CLASS

Tuesdays. 9-11.30am at Melville Arts at Atwell House – 4 weeks
8 Feb – 1st March BOOKINGS www.melvillearts.com.au (08) 9330 2800

NEW EXPRESSIVE LANDSCAPES - PRINTMAKING CLASS

Tuesdays. 9 – 11:30am at Melville Arts at Atwell House – 4 weeks
8th March – 29th March BOOKINGS www.melvillearts.com.au (08) 9330 2800

PRINTMAKING ON FRIDAYS - 4-WEEK PRINTMAKING COURSE

Fridays at Canning Arts Group. 12:30-3.00pm – details not yet finalised. Check the Canning Arts Group website for details. www.canningartsgroup.vpweb.com.au

PRINTMAKING SUMMER SCHOOL WORKSHOPS

MONOTYPE IN MULTIFORM – FUN WITH FLORALS

Sun 23rd Jan | 10am – 3.30 pm Melville Arts at Atwell House
Combine 2 different methods of monotype printmaking with plant transfers and a splash of colour.
BOOKINGS – www.melvillearts.com.au (08) 9330 2800

LANDSCAPES IN MONOTYPE

Sunday 15th Jan 10am -3.30pm at Glyde Inn, East Fremantle.
create numerous prints and learn mark-making skills with the immediate and exciting method of monotype. BOOKINGS -FULL- to join wait list contact www.glydein.org.au (08) 9339 3964

CREATIVE COLLAGRAPHS-

Wednesday 19th January 9am – 2pm -Canning Arts Group
Work with pattern, texture and organic form inspired by plants to create instant collagraph that you can print from numerous times in different ways. BOOKINGS – www.canningartsgroup.vpweb.com.au

CHILDREN'S SCHOOL HOLIDAY CLASSES

I'm also running children's art classes from the 10th – 13th January at Melville Arts at Atwell House – so if you have young ones who need something creative to do, I'm teaching some fun hands on classes in a variety of media (paper sculpture, painting, bookmaking and printmaking)

PAINTING WORKSHOPS

SGRAFFITO IN THE LANDSCAPE – ACRYLIC PAINTING WORKSHOP

Tuesday 5th April Melville Arts at Atwell House
BOOKINGS – www.melvillearts.com.au (08) 9330 2800