

ANN ARMSTRONG

Condensed Portfolio

Designer/ Cartographer /Artist /Architect

I design and co-create frameworks for interpretation and engagement that strengthen our awareness of-and relationship with-the surrounding landscape. This increased connection helps deepen community experience, understanding, and advocacy.

The tools I value most and regularly employ are: play, novelty, narrative, MAPS, invitations to explore, observe and document. Throughout, I combine data with tactile reality.

The following examples are in print, digital, and real time/immersive forms.

ann-made.org

Index:

Odditree Society

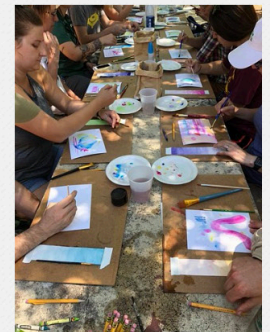
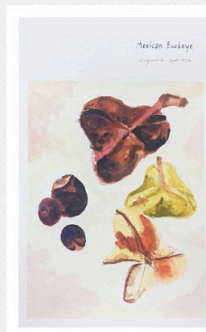
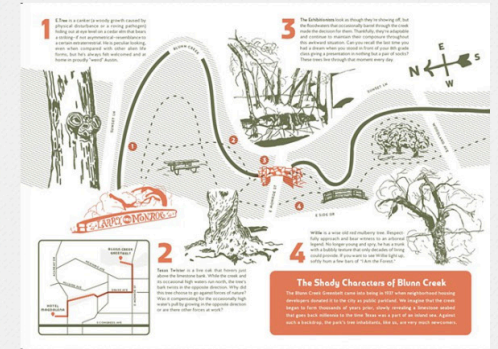
Odditree Society: Tillery Street

A Walk in the Park

Austin's Atlas

Thalweg

Other mediums



ODDITREE SOCIETY

Exploring Austin's Urban Forest

2013 - present

Project: Odditree Society

Role: co-founder, on-the-ground researcher, content creator, and illustrator in collaboration with Angela Hanson, City Urban Forester (former position)

Partner: Community Trees Preservation Division via City of Austin Urban Forest Grant

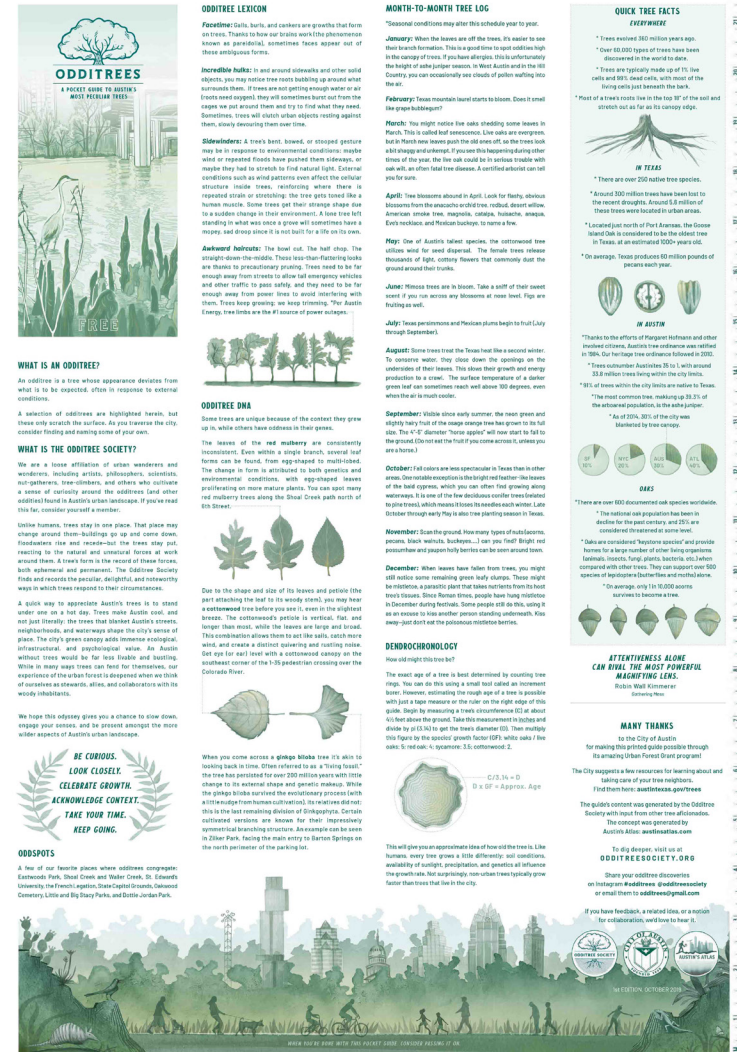
Approach: The project invites the act of LOOKING for NOVELTY AND PATTERNS as a tool for discovery/ learning.

odditreesociety.org

I

Images at right:

Odditree Society Instagram feed (crowdsourced), Odditree Guide, annual odditree bike rides/On the ground explorations



ODDITREE SOCIETY

Documenting Plant Life on Tillery St.

2017

Project: Watercolor plant identification workshop

Role: Workshop creator + facilitator

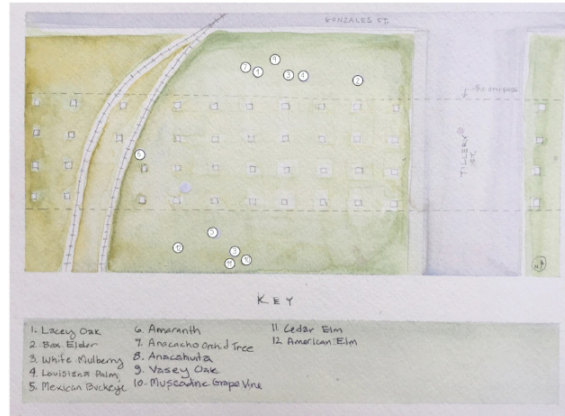
Partner: n/a

Approach: Collective exploration + observation +
DOCUMENTATION

This workshop framework paired direct observation with the act of artistic documentation. Prototyped on Tillery Street in 2017, the framework has since been used at two other events to engage community members with local green spaces.

The workshop structure is driven by discovery and agency. Participants disperse across the site to locate an unfamiliar plant, after a brief introduction to watercoloring. Once each person sketches or paints their specimen, they can identify it using plant identification field guides on hand or request help from a TreeFolks volunteer. The generated work is tied together with a numbered map showing where each specimen was found.

odditreesociety.org



Images at right:

Output from workshop and workshop.

A WALK IN THE PARK

Exploring Laguna Gloria, one walk at a time

2021

Project: A Walk in the Park workshop series + final resource

Role: 2021 Observer-in-Residence: Invited local artists with an environmental focus to lead each workshop, collaborated on workshop curriculum, co-facilitated workshop; currently compiling compilation of workshop content and graphic design for publication of a final resource.

Partner: The Contemporary Austin (museum)

Approach: Collective exploration and interpretation through unique/distinct lenses

A Walk in the Park invited park-goers to explore the Laguna Gloria sculpture park through different sensory lenses*. Lenses came from each artist's POV/area of focus. In total, 70 people (aged 9-65 years old) attended four workshops focused on trees, sound, color, and invasive species. Each workshop involved a collective walk, followed by individual observations and data gathering focused on the topic at hand. Participants would reconvene at the end to share and review findings. The outdoor workshops provided a new way for community members to engage with the museum while meeting public safety guidelines during the Covid-19 pandemic. A self-guided interpretive print resource, generated from said workshops, is currently in production. (estimated completion: Dec. 2021).

*Sensory lens = a filter for honing and narrowing our focus.

Images at right:

Final print resource (all 4 and then close up of color) and workshop snapshots.



EXPLORE:COLOR

INK AMPHITHEATER

- Descend into the **Ink Amphitheater** and look for the large live oak at the center of the space. Beneath the tree's canopy, scan the ground for small (5/8") brown spheres. With a little patience, you'll notice compact camouflaged pigment powerhouses called oak galls.

Galls form on oak trees to protect wasp larvae. The tiny hole in each is the exit route of the adult wasp. Centuries ago, ancient Greeks discovered that combining the tannin-filled gall interiors with an iron solution created a deep black color punch.

*If you did not find a gall, fear not. Look again the next time you pass under a live oak.

- Zoom out and scan your immediate environment. Find a path that looks inviting and continue on to **Birders Point**. Keep your eyes peeled for unexpected sparks of color. If you're inspired, capture what strikes you with a photo and share it via the Instagram hashtag.

Learn More/Aprende Más:
thecontemporaryaustin.org/color

EXPLORE & SHARE WHAT YOU FIND VIA : #lagunagloriaCOLOR
TAG US : @contemporaryatx

EXPLORAR:COLOR

INK AMPHITHEATER

- Descienda **Ink Amphitheater** y busque el gran roble vivo en el centro del espacio. Debajo del dosel del árbol, escanee el suelo en busca de esferas marrones pequeñas (5/8"). Con un poco de paciencia, notará las potencias de pigmentos camuflados compactos llamados agallas de roble.

Las agallas se forman en los robles para proteger a las larvas de avispa. El pequeño agujero en cada uno es la ruta de salida de la avispa adulta. Hace siglos, los antiguos griegos descubrieron que la combinación de los interiores de las agallas llenas de taninos con una solución de hierro creaba un intenso color negro.

* Si no encontraste una hiel, no temas. Mire de nuevo la próxima vez que pase debajo de un roble vivo.

- Aleje y escanee su entorno inmediato. Encuentre un camino que parezca atractivo y continúe hasta **Birders Point**. Mantenga los ojos bien abiertos para detectar chispas de color inesperadas. Si está inspirado, capture lo que le llame la atención con una foto y compártala a través del hashtag de instagram.

EXPLORA Y COMPARTE LO QUE TÚ FIND VIA : #lagunagloriaCOLOR
ETIQUETARNOS: @contemporaryatx



AUSTIN'S ATLAS

Exploring Austin's Sense of Place

2011 - present

Project: Austin's Atlas

Role: Founder/creator/archive maintainer

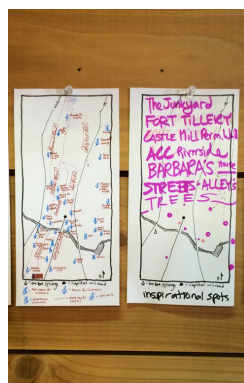
Partner: Citizens of Austin

Approach: Hand-drawn maps and illustrated pedestrian guides

Austin's Atlas is a participatory project that observes, documents, and expands upon the city's sense of place. It does this through site-specific workshops, guided walking tours, mappy hours, mappenings where maps are instigated and collected, and other formats. The project contains a growing collection of over 300 hand-drawn maps of Austin that create an idiosyncratic and complex portrait of the city.

Images at right and below:

Write up, maps collected from Austinites, pedestrian guides and maps.



AUSTIN'S ATLAS WALK #1: Walls and Voids (and the voids we find within walls)

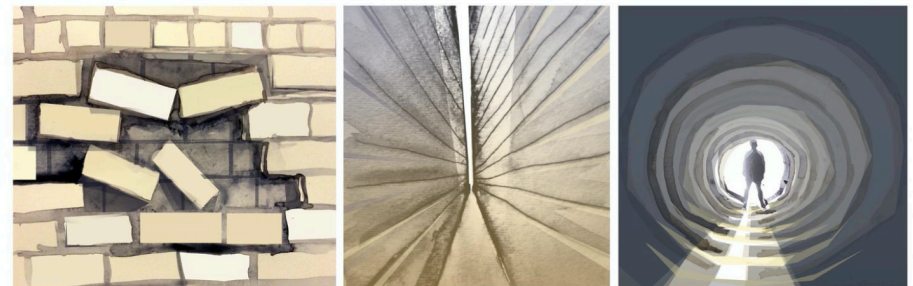
April 27th, Capital steps @ 10am. Group Walk until 11:15, then meander back to the Capital steps. Meet/debrief @ 11:45.

TO PONDER: CAN YOU RECALL A PERSONAL MEMORY/MEMORABLE EXPERIENCE RELATED TO A VOID OR A WALL?

WALL Etymology: From Middle English wall, from Old English weall ("wall, dike, earthwork, rampart, dam, rocky shore, cliff"), from Proto-Germanic *wallaz, *wallq ("wall, rampart, entrenchment"), from Latin vallum ("wall, rampart, entrenchment, palisade"), from Proto-Indo-European *wel- ("to turn, wind, roll"). Cognate with North Frisian wal ("wall"), Dutch wal ("wall, rampart, embankment"), German Wall ("rampart, mound, embankment"), Swedish vall ("mound, wall, bank"). More at wallow, **walk**.

NOUN: 1) Each of the substantial structures acting either as the exterior of or divisions within a structure. 2) A point of desperation. 3) A point of defeat or extinction. 4) An impediment to free movement. 5) A barrier. 6) A divisive or containing structure in an organ or cavity. 7) A personal notice board listing messages of interest to a particular user.

VOID Etymology: From Old French vuit, void (modern vide) **NOUN:** 1) an empty space; emptiness 2) something experienced as a loss or privation 3) a gap or opening, as in a wall 4) a vacancy; vacuum.



"Emptiness is the pregnant void out of which all creation springs...." -Wayne Muller

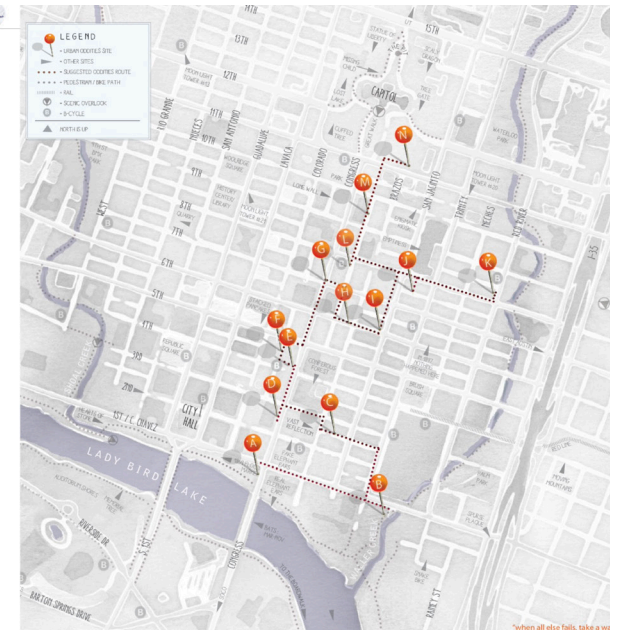
A story map...

URBAN ODDITIES GUIDE

INTRODUCTION: What is an urban oddity? It's a shift in the urban fabric, a break from the normal and expected. Sometimes it's intentional, other times, an accident. It might be a piece of art found in an unexpected place or something that's been hidden in plain sight. Whichever the case, we think noticing urban oddities makes the city more curious, fun, and rich -- and so this guide aims to celebrate them. Herein, we highlight 14 main sites--however, we hope that you uncover new and uncharted oddities along the way. Or better yet, maybe you have an urban oddity of your own to weave into the urban fabric....



INSTRUCTIONS: You can follow the map in order from A to N, reverse the order, or just take in a few sites here and there. Whenever you decide, take your time, look closely, and feel free to pause and ponder. We also recommend you undertake this



THALWEG

Exploring the landscape through play.

2020-21

Project: THALWEG fort @ Fortlandia and associated interpretive content + map of caves/creeks/springs across Austin

Role: Designer, detailer, fabricator, researcher/content creator, illustrator. Collaborators: Kat Townsend and Blue Sky Design Build

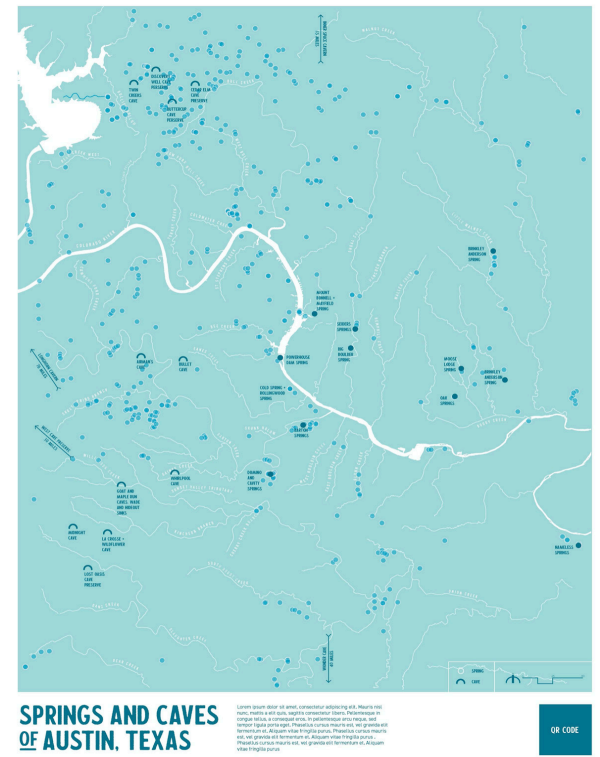
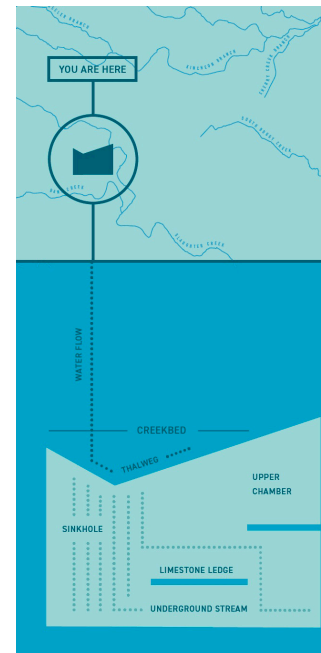
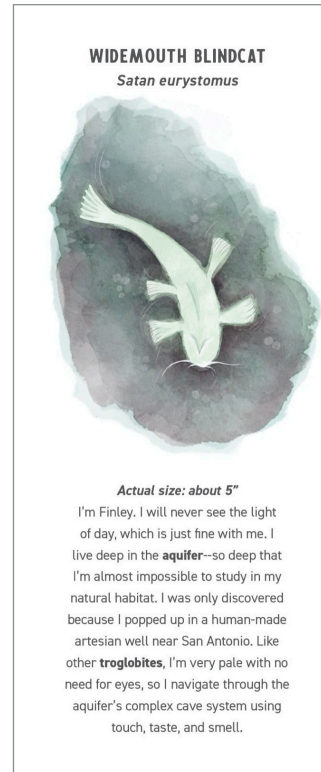
Partner: Lady Bird Johnson Wildflower Center

Approach: Invite people to explore and learn about the landscape through PLAY.

The THALWEG fort created a conceptual connection with the Texas hill country. Designed as a vertical slice of the local landscape and painted to evoke spring water, the fort encouraged active exploration of subterranean aquifers and limestone karst. Endemic cave-dwelling animals were hidden throughout the fort's interior for more than 82,000 explorers to discover during its 4 month run.

Images at right and below:

Example of endemic cave critter content, diagram, map, and fort photos.



Construction, Metal Work, Ephemeral Sculpture

2008 - present

Images:

Upper right: Designed, built, and lived in a tiny house.

Lower right: Metal work (functional sculpture, tools, architectural welding)

Below: Ephemeral Sculpture

