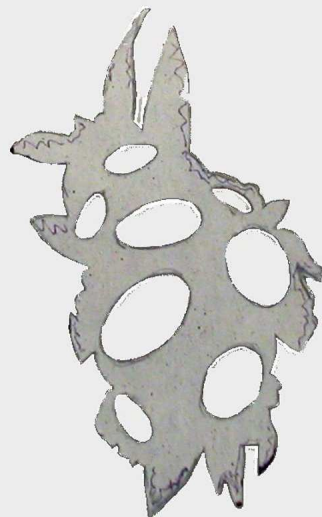
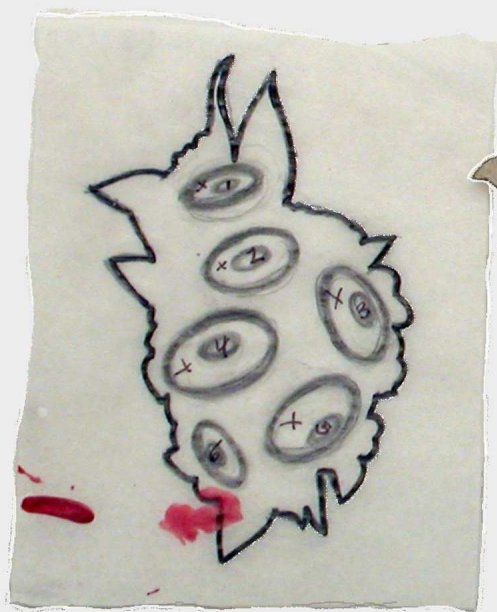


Sondra Sherman

Residue





Sondra Sherman

Residue

... a record of interstitial images of the design and fabrication process

Funded in part by the San Diego State University Grants Program

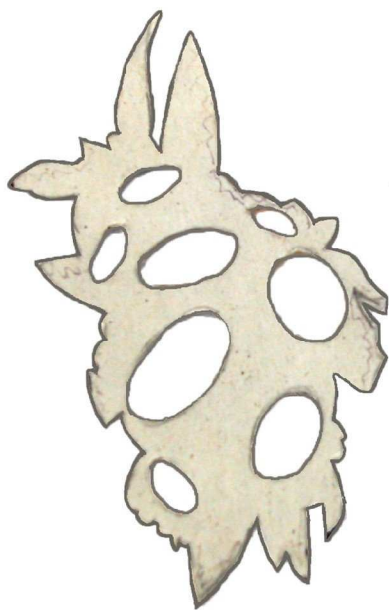
Copyright 2009

Sondra Sherman

The book author retains sole copyright to his or her contributions to this book.





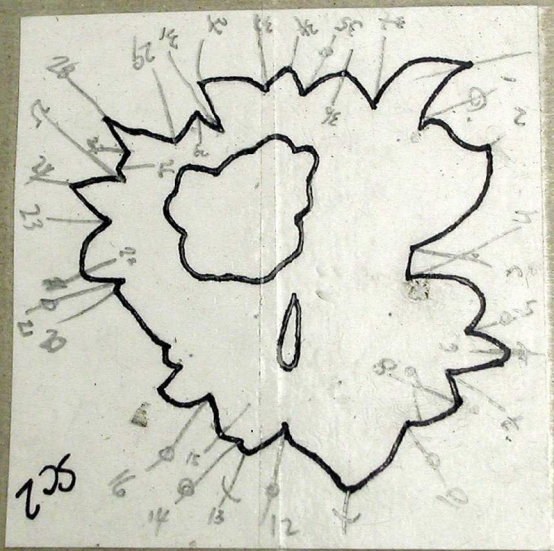




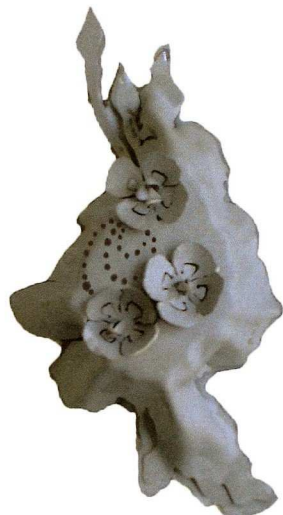
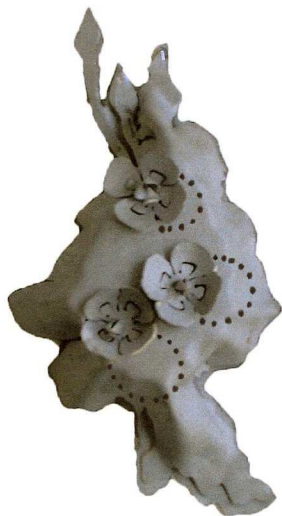


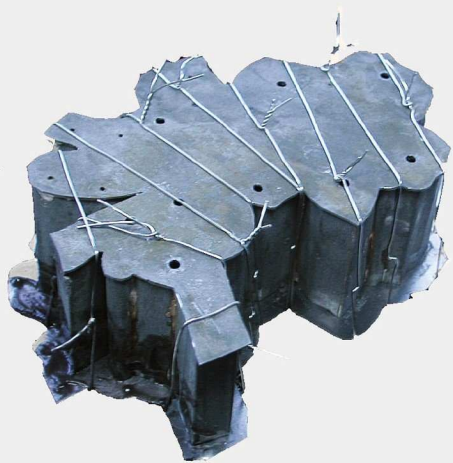






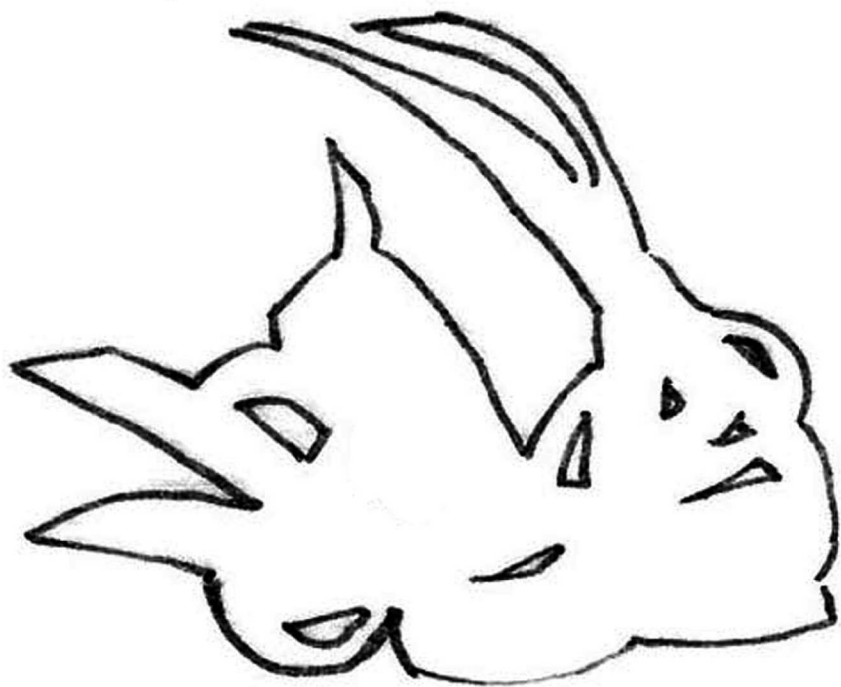


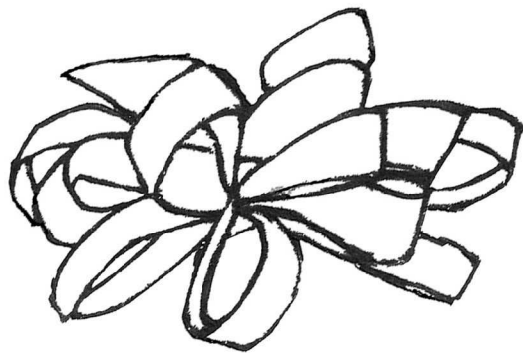
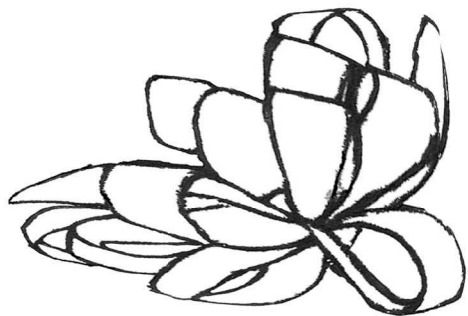


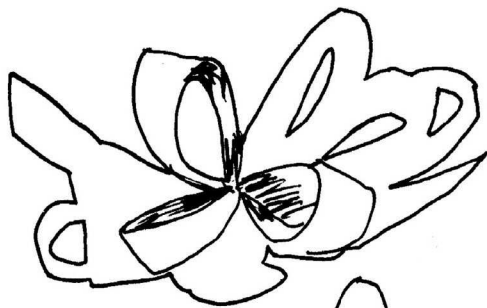
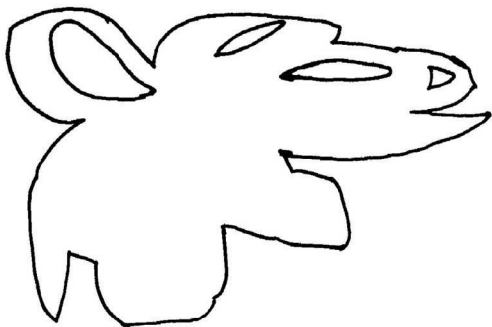
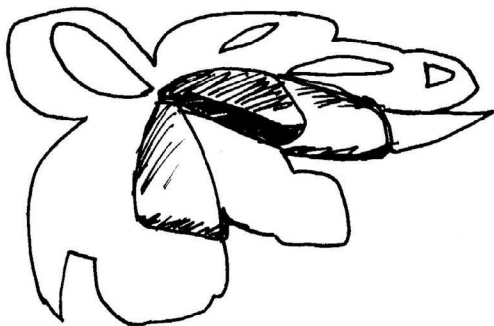


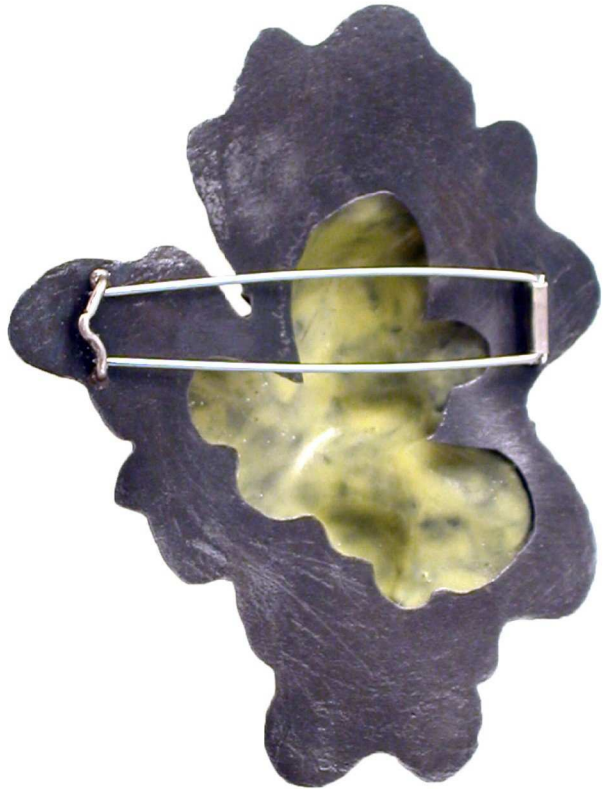












Sondra Sherman is Associate Professor of Art at San Diego State University. Sherman's work is exhibited and published in Europe as well as the U.S. She has been the recipient of various awards including a Tiffany Foundation Emerging Artists Grant, two RI Council on the Arts Individual Artists Fellowships, Pennsylvania Council on the Arts Individual Artists Fellowship, NEA Regional Artists Fellowship, and a Fulbright Scholarship for study abroad. Sondra received her Diplom Degree (MFA equivalent) from the Academy of Fine Art, Munich, Germany. Her work is included in the collections of the Metropolitan Museum of Art, Philadelphia Museum of Art, Museum of Fine Arts Boston, Museum of Art and Design New York, Smithsonian American Art Museum, RISD Museum, Turnov City Museum in the Czech Republic, and Myers School of Art at the University of Akron Ohio.

Sherman's work plays off of traditions of jewelry; regarding the private experience of the wearer and the public affect of ostensibly wearable objects. Her most recent works mark a shift to a more process evident form language. Process becomes content as viewers are drawn into the intimate space of the work. Large volumes are lightweight, fine detail reveals a raw materiality; upon closer inspection appearances are questioned, thoughtful scrutiny is advised.









