

Ashley Edgerton

Visual portfolio of selected student work
and community engagement projects





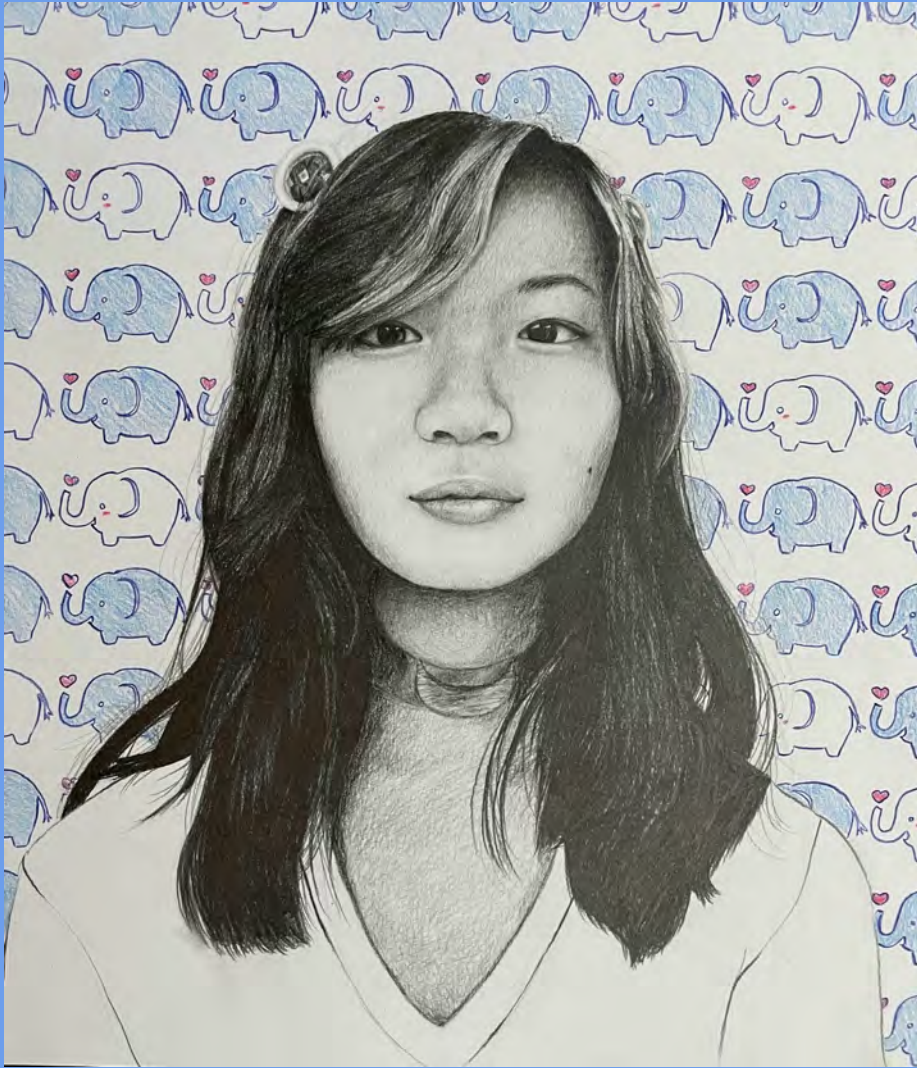
Henry the Greyhound
posed for 8th through 12th
grade artists. Drawings
created with charcoal and
pastel on gray paper 2022.



8th grade artists
drawing Henry
spring 2024



8th Grade Self-portraits
Using the grid and ratio method to draw with graphite. Students explored their own identity through the works of Kehinde Wiley, Hung Liu and other inspirational artists.



Art is a way of recognizing oneself.

Louise Bourgeois



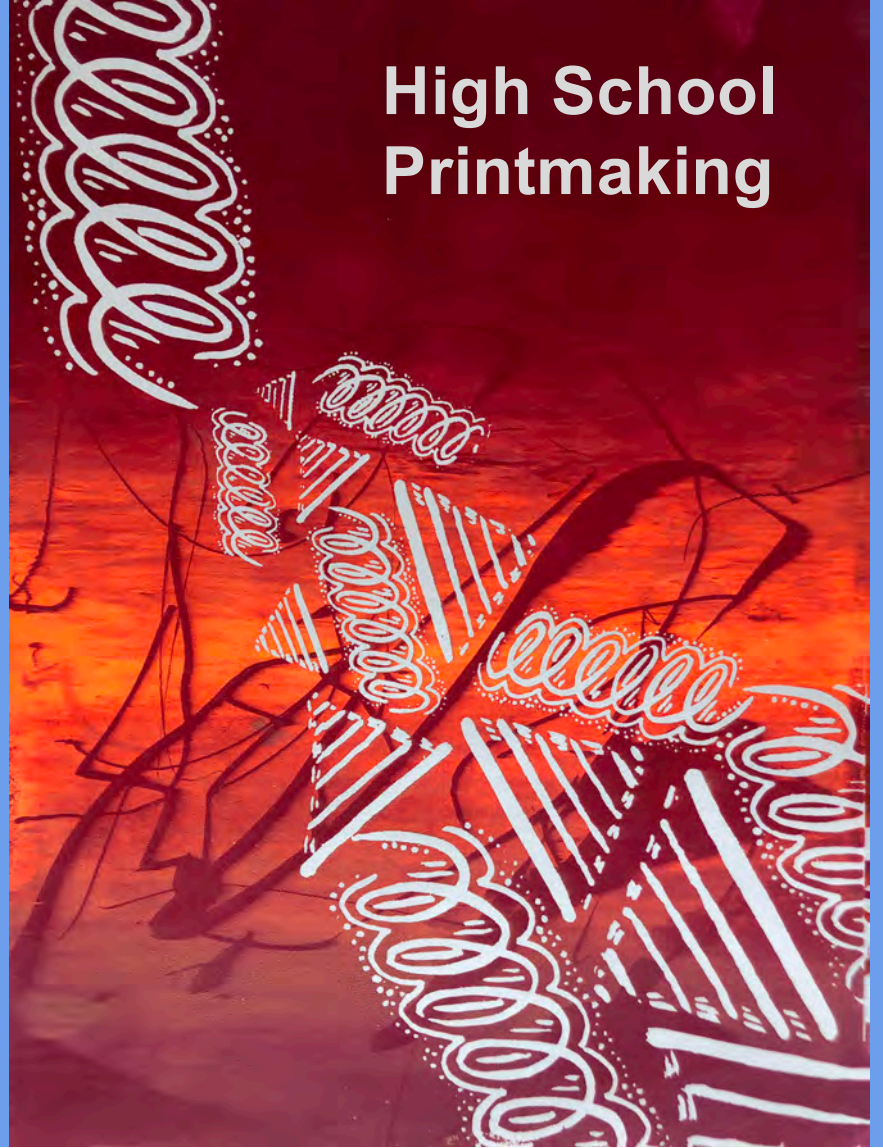
Drawing & Painting Level II:

walnut Ink on Lenox paper with Linen book cloth and book board





High School Printmaking





Screenprinting

Drypoint Collaborative Print





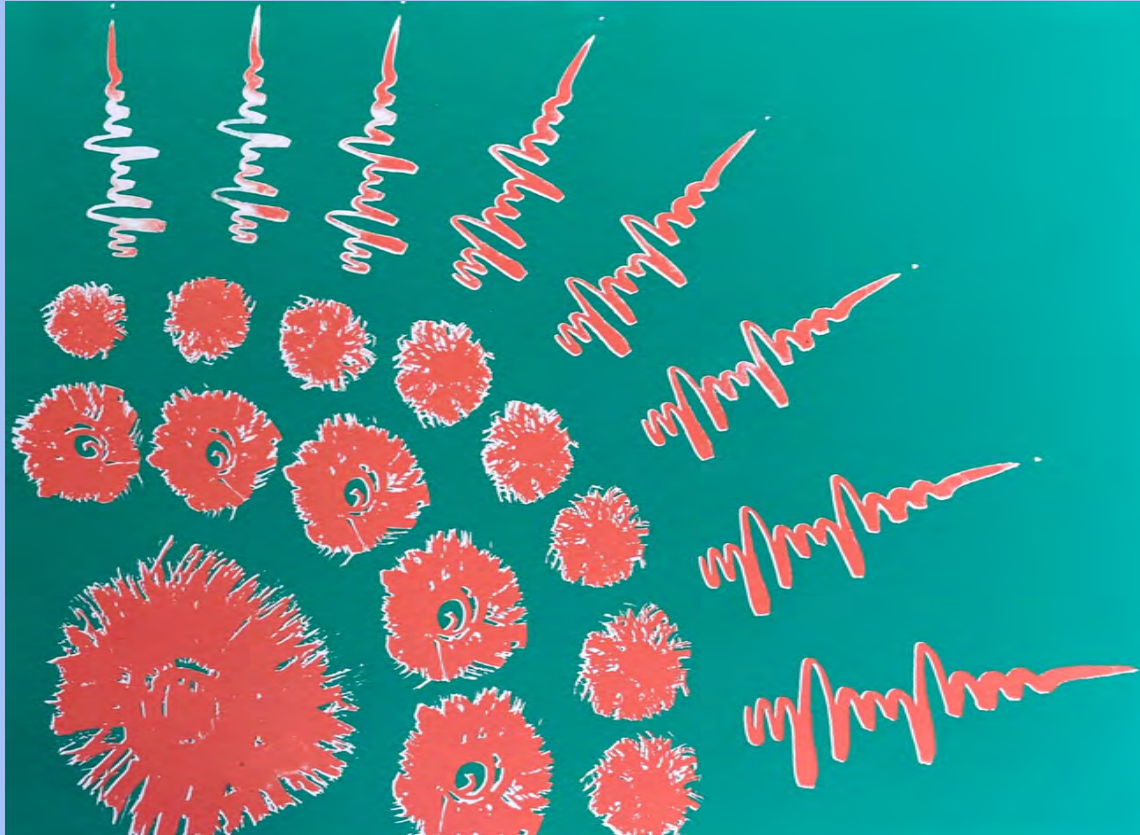
Linocut in progress



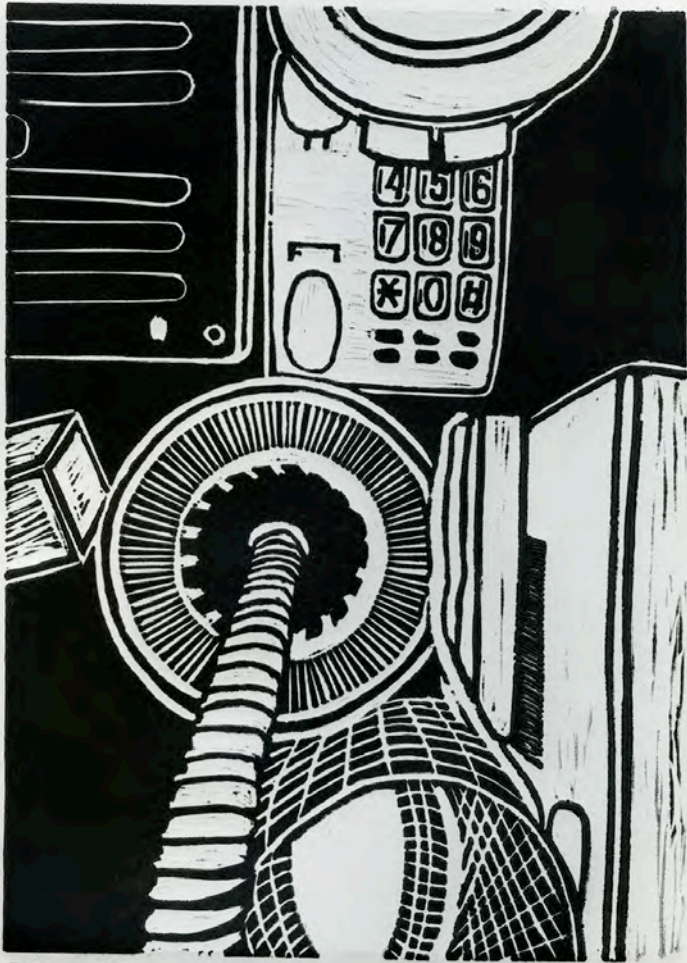
Screenprinting



Screenprinting



Screenprinting



5/6

mi hi



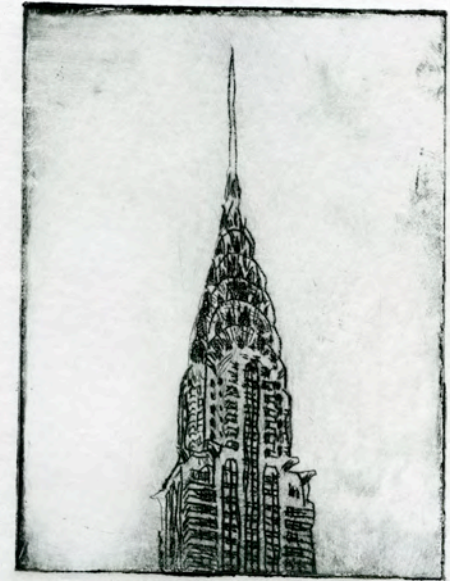
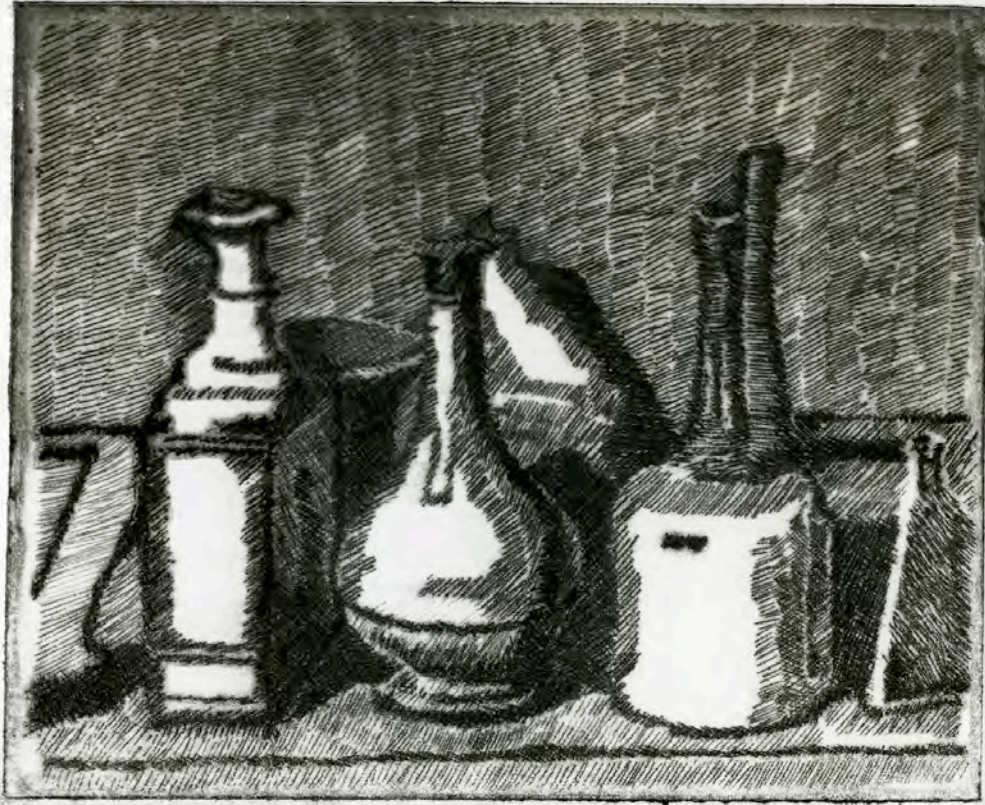
1/2

Sara Bahaf 2016

Linocut



Hand painted Linocut



Drypoint after Morandi (above) and Chrysler Building (right)



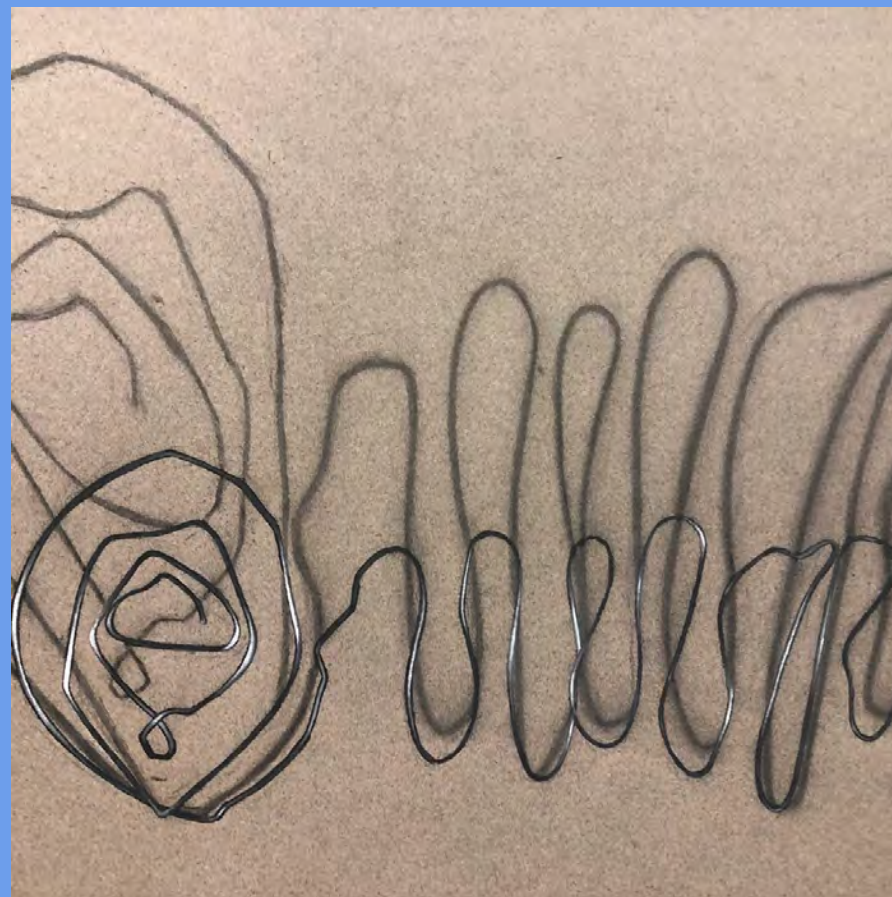
2/4

LUCY

Amy Phillips

Etching using a safe copper sulfate etching solution





Drawing & Painting Level II: drawing from an abstracted wire sculpture with an individual light source. Charcoal on gray paper.

Drawing & Painting Level II: Extended figure drawing in chalk pastel

This is a month-long project that begins with quick gesture drawings and culminates in a long-pose for multiple classes. An emphasis is placed on proportion, value, texture, and the use of negative space.







Learning to
really spend
time with art

Painting by
Marcellina
Akpojotor
Sister Sister III,
2020 - 21
Fabric & acrylic
on canvas

Art Empowerment Program: a collaborative creative program with
The Women's Safe House and John Burroughs School.
Started in 2021 by Ashley Edgerton





The **Art Empowerment Project** at **The Women's Safe House** is a collaborative art program designed for residents who may benefit from the healing and empowering aspects of creating art. Survivors of intimate partner violence and their dependent children can seek emergency shelter and supportive services at The Women's Safe House (TWSH) - established in 1977. The facility and emergency hotline are staffed 24/7, and all services and programs are provided free of charge.

The Art Empowerment Project (AEP) brings together TWSH residents with student volunteers from John Burroughs School. This meaningful collaboration focuses primarily on creating trauma-informed projects in the visual arts to help participants in their healing journey toward a new life. The AEP program meets every two weeks for the adults and a separate program runs concurrently with the children. With generous funding provided by the **Arts and Healing Initiative Grant** through the **Arts and Education Council** as well as the **Will Flores Foundation**, the AEP provides high quality art materials and arts facilitation to the survivors of domestic and sexual abuse.





Camp projects on right / Linocuts on left
Art Empowerment Project







Stained Glass Windows Facilitator with High School Seniors

Taught by Nancy Willimon for the Senior May
Project at John Burroughs School



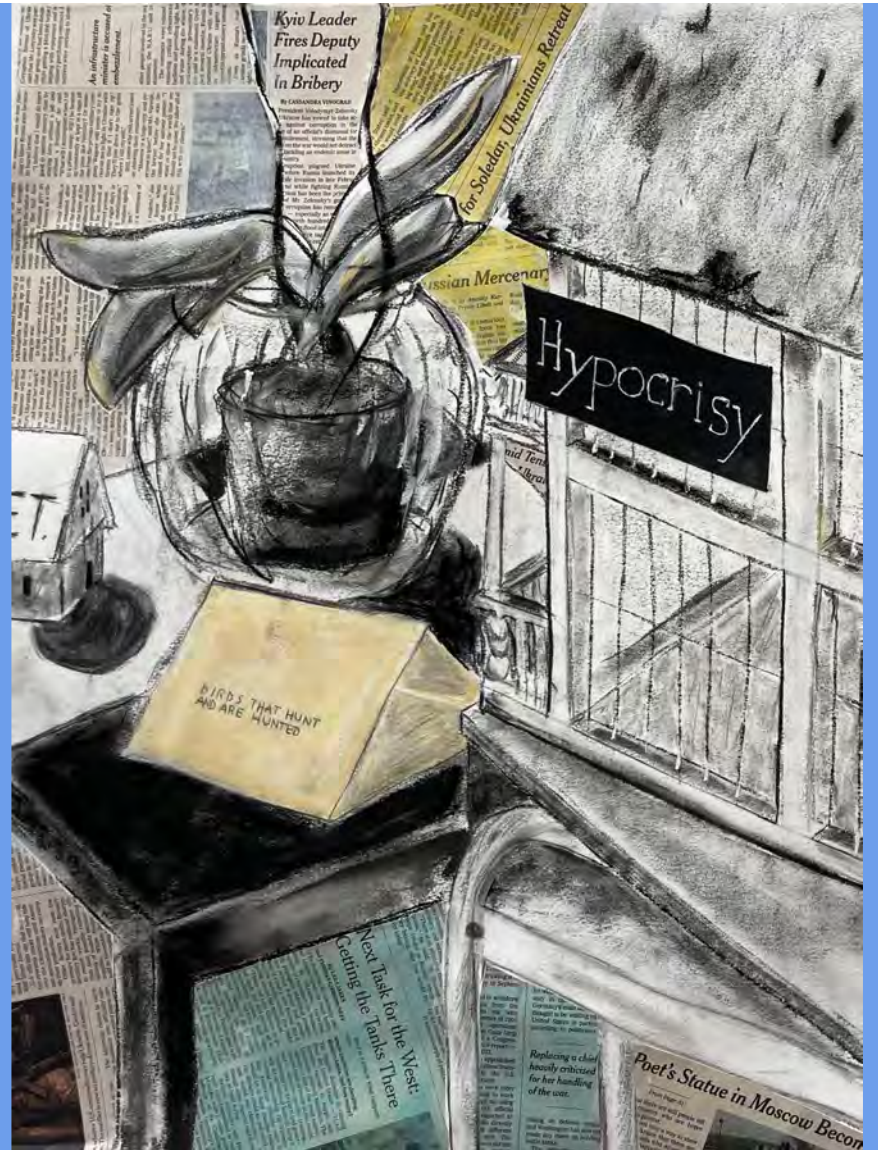




Aim High Collaborative Project 2023
Grades 6 through 8



Drawing & Painting Level II: Still-life in the style of South African artist, William Kentridge, using charcoal, gesso, and collage.

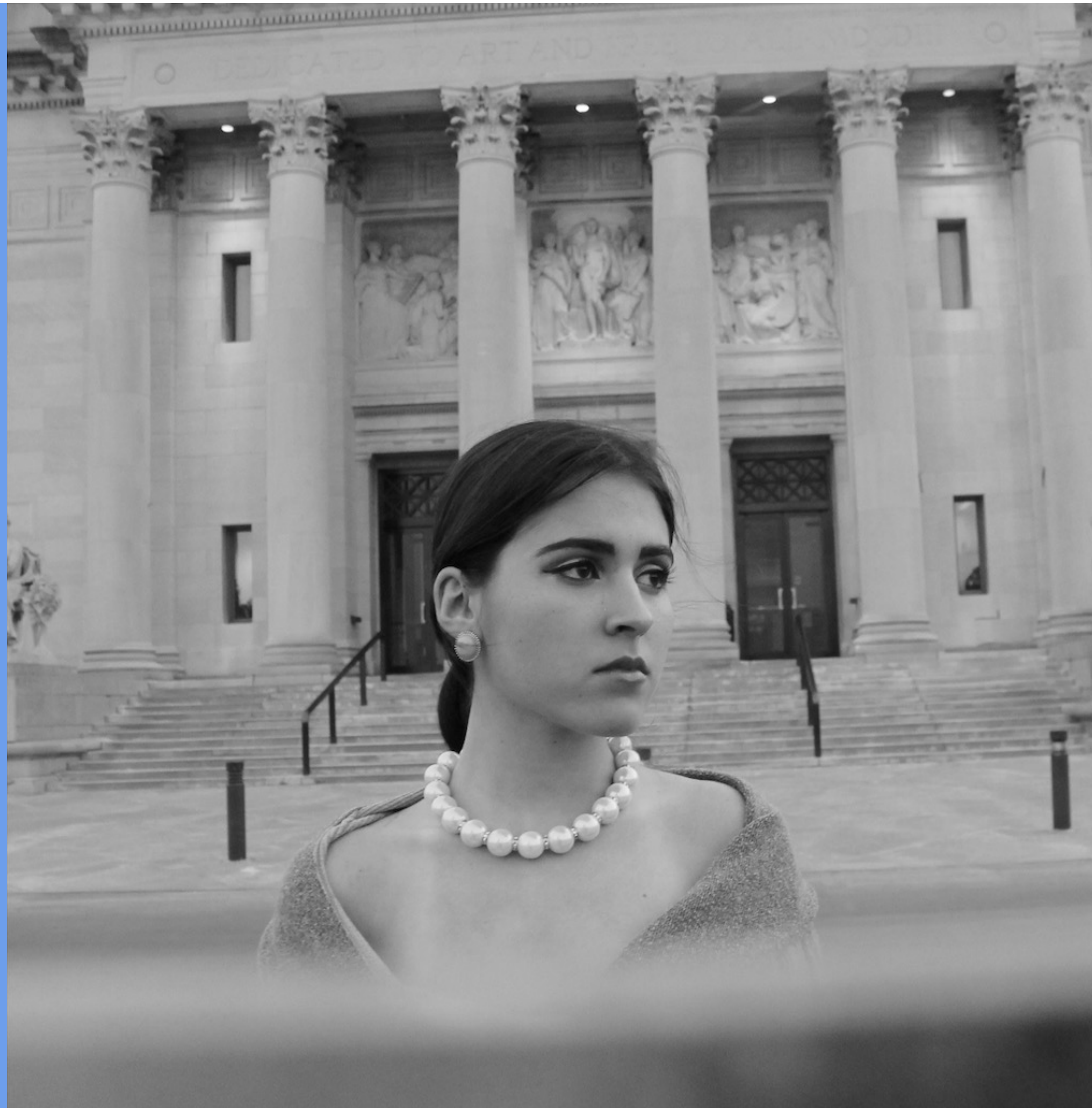




Photography II
students making tintype
self-portraits

Photography II
Photo-cubism project





Photography II
Emulation project

Photography II

Contact sheet as Art





Photography II
Transcending the Portrait



For more information –
please visit my website
ashleyedgerton.com
or contact me at
ashley.oates@icloud.com

Thank you.