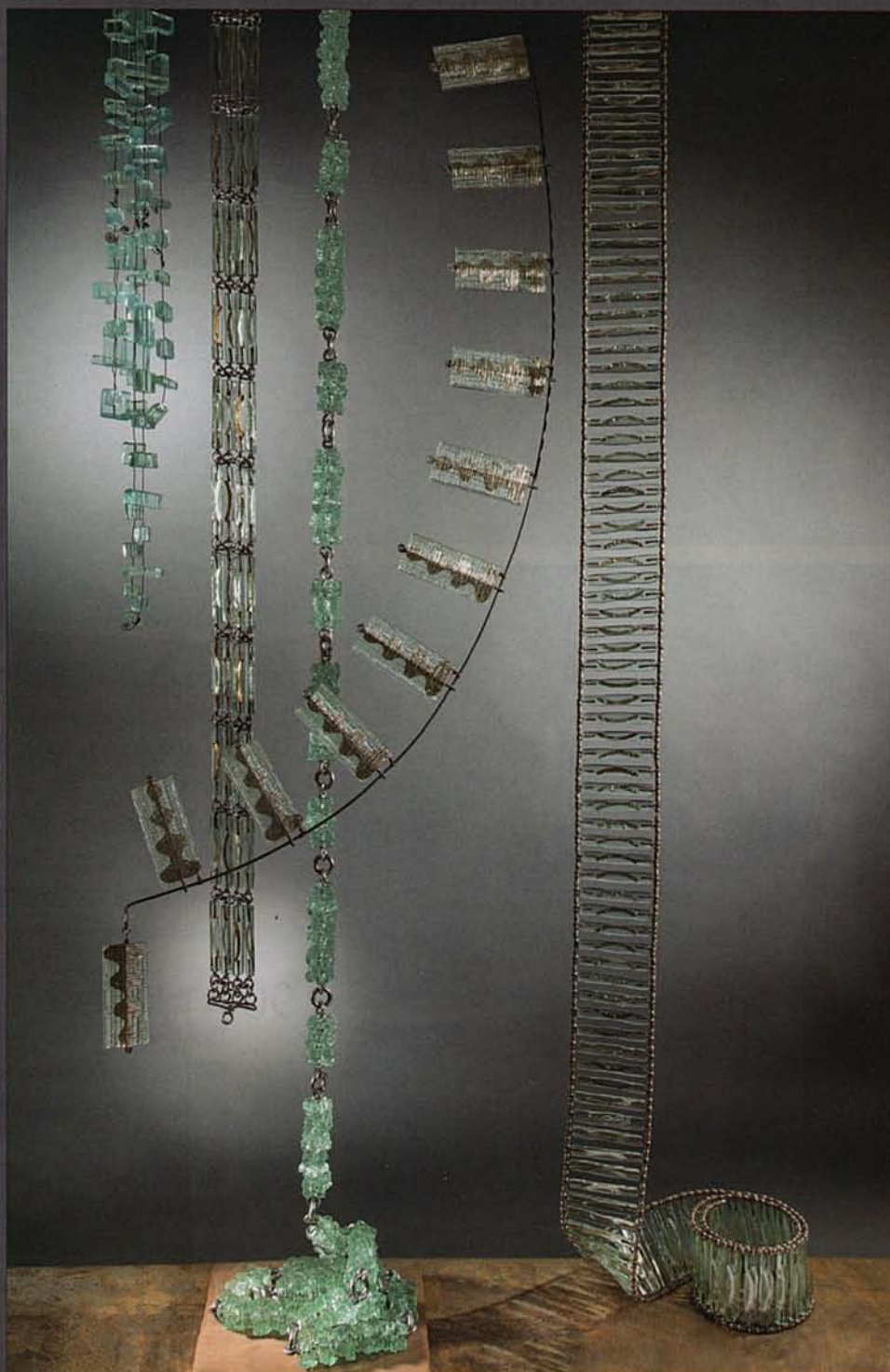
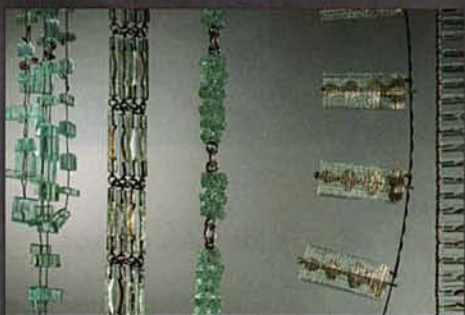




LA MESA  
OF SANTA FE

225 Canyon Road • Santa Fe NM  
505-984-1688 • [lamesaofsantafe.com](http://lamesaofsantafe.com)

## Melissa Haid



fused glass sculptures

Daniel Quat Photography

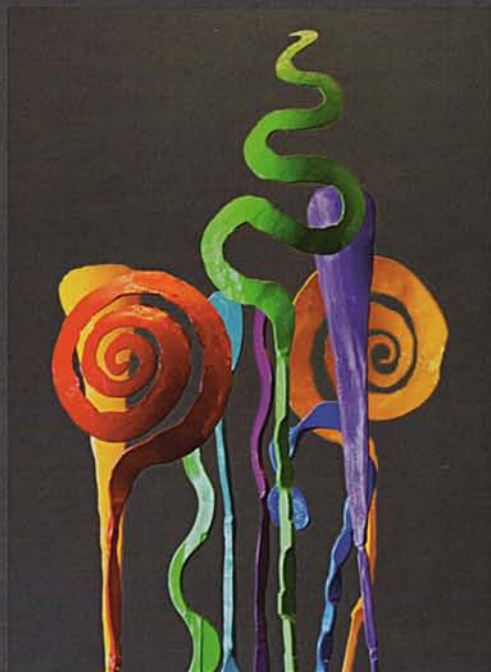
Handcrafted dinnerware, pottery, glass art, lighting, furniture,  
and fine art by more than fifty contemporary artists.





LA MESA  
OF SANTA FE

225 Canyon Road • Santa Fe NM  
505-984-1688 • [lamesaofsantafe.com](http://lamesaofsantafe.com)



Christopher Thomson



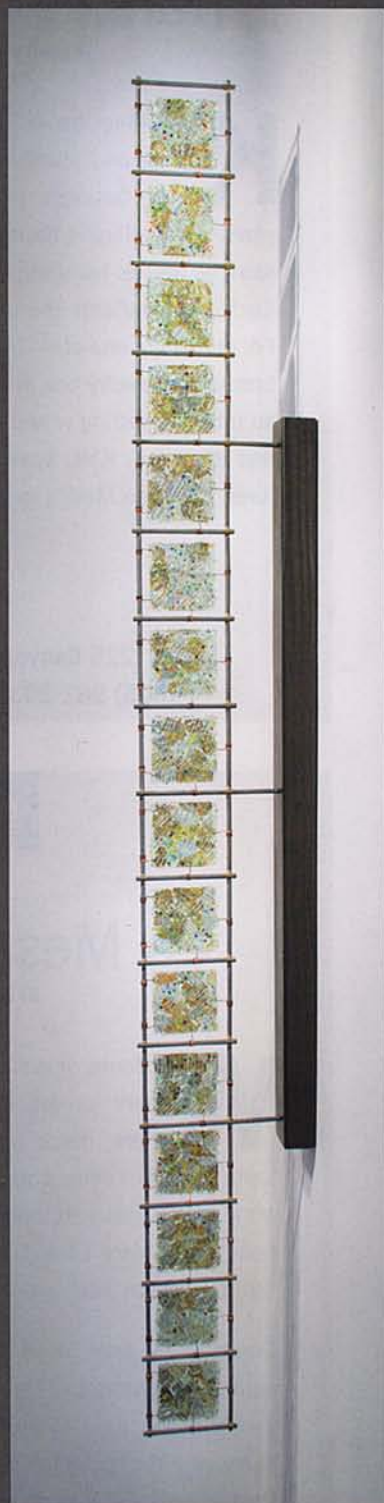
Suzanne Betz



Gregory Lomayesva



Richard Mole and Christopher Thomson



Melissa Haid

Handcrafted dinnerware, pottery, glass art, lighting, furniture,  
and fine art by more than fifty contemporary artists.





LA MESA  
OF SANTA FE

225 Canyon Road • Santa Fe NM  
505-984-1688 • [lamesaofsantafe.com](http://lamesaofsantafe.com)



Christopher Thomson



Vicki Grant



Photo: Katie Russell

Melissa Haid



Russ Vogt

Handcrafted dinnerware, pottery, glass art, lighting, furniture,  
and fine art by more than fifty contemporary artists





Melissa Haid: Fused Glass



LA MESA  
OF SANTA FE

225 Canyon Road • Santa Fe NM  
505-984-1688 • [lamesaofsantafe.com](http://lamesaofsantafe.com)

Russ Vogt: Ceramic Sculpture



Diana Pardue: Painting



Photo: Kate Russell

Christopher Thomson: Forged Steel





## LA MESA OF SANTA FE

225 Canyon Road, Santa Fe | 505-984-1688 | lamesaofsantafe.com

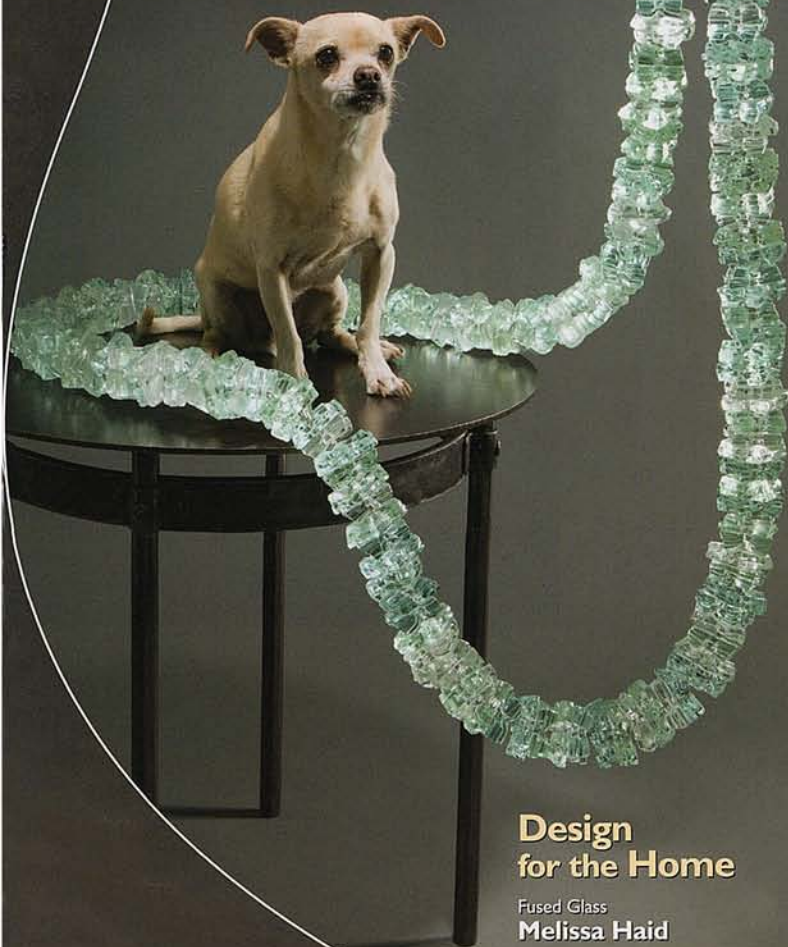


When this home's owners wanted striking outdoor art for the entryway to their remodeled home, they commissioned artist Melissa Haid, whose work is represented by La Mesa of Santa Fe. Haid custom-designed and created this three-panel, fused-glass wall sculpture, with silver- and gold-tinted mica and glass beads in a leaf motif between layers of glass. Beneath it sits a contemporary custom bench in powder-coated steel and burned ash by La Mesa artist P.J. Rogers. With a focus on function and exceptional design, the Canyon Road gallery presents glass and ceramic wall art and tableware; Patricia Naylor's clay wall sculpture; Hopi-inspired wooden figures and masks by Gregory Lomayesva; hand-forged iron furniture, lamps, and fireplace sets by Christopher Thomson; and colorful outdoor ceramic sculpture by Russ Vogt. As owner Mary Larson points out, La Mesa's more than 60 artists, who specialize in quality handcrafted furnishings, accessories, and fine art, offer a treasure trove of ideas and inspiration for the home.





225 Canyon Road  
Santa Fe, New Mexico  
505.984.1688  
lamesaofsantafe.com



**Design  
for the Home**

Fused Glass  
**Melissa Haid**  
Hand Forged Steel Table  
**Christopher Thomson**

Melissa Haid  
*"Pathway"*  
fused glass sculpture  
9' x 7"  
(dimensions approx)



LA MESA  
OF SANTA FE

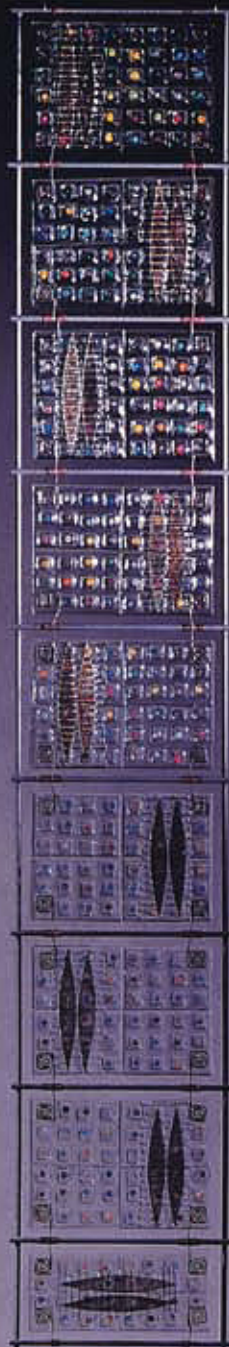
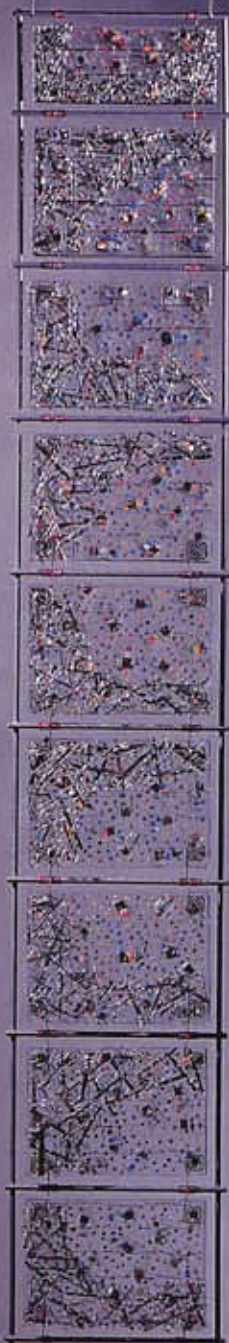
225 Canyon Road • Santa Fe NM  
505-984-1688 • lamesaofsantafe.com

Photo: Kate Russell





Melissa Haid  
Fused Glass Sculpture  
53" h x 9" w



A GALLERY  
OF THE FINEST  
QUALITY  
CONTEMPORARY  
CRAFT,  
FURNITURE,  
LIGHTING  
AND ART

225 Canyon Road  
Santa Fe, New Mexico 87501  
505.984.1688  
fax 505.992.8433  
lamesasf@aol.com  
Open Monday through  
Saturday, 10 am to 5 pm  
Sunday, 11 am to 4 pm  
Map #65

LA MESA OF SANTA FE

SINCE 1982



L A M E S A



O F S A N T A F E

225 Canyon Road  
Santa Fe, New Mexico  
505.984.1688

[www.lamesaofsantafe.com](http://www.lamesaofsantafe.com)

**Melissa Haid**

*Lineas*  
Fused Glass on Steel





Melissa Haid  
*Fused Glass Sculpture*

**EXCEPTIONAL HANDCRAFTED ITEMS SINCE 1982**

La Mesa of Santa Fe  
225 Canyon Road | Santa Fe, NM | 505.984.1688  
[lamesaofsantafe.com](http://lamesaofsantafe.com)

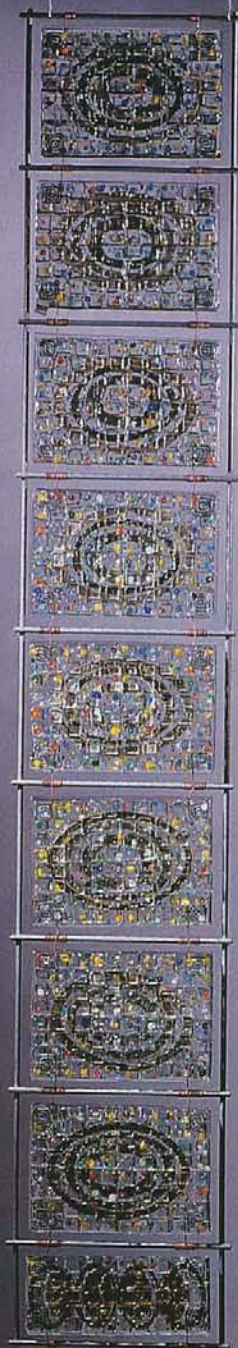




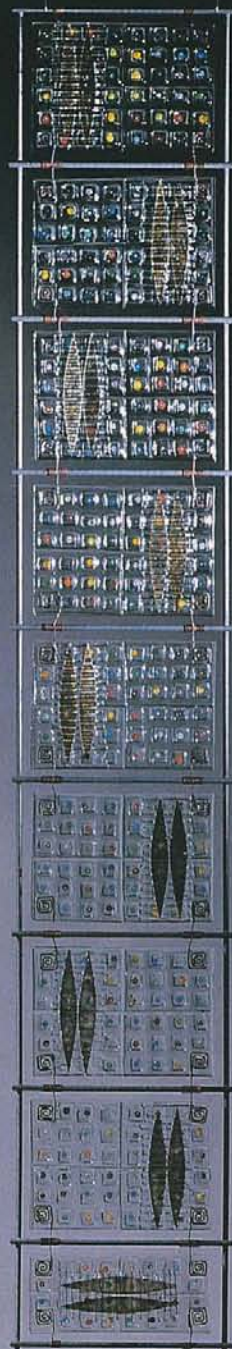
Melissa Haid  
*In Nine Segments*  
Fused Glass/Steel

Photo: Kate Russell





Melissa Haid  
Fused Glass Sculpture  
53" h x 9" w



A GALLERY  
OF THE FINEST  
QUALITY  
CONTEMPORARY  
CRAFT,  
FURNITURE,  
LIGHTING  
AND ART

225 Canyon Road  
Santa Fe, New Mexico 87501  
505.984.1688  
fax 505.992.8433  
lamesasf@aol.com  
Open Monday through  
Saturday, 10 am to 5 pm  
Sunday, 11 am to 4 pm  
Map #65

LA MESA OF SANTA FE

SINCE 1982





## LA MESA OF SANTA FE

Since 1982

A GALLERY OF  
THE FINEST QUALITY  
CONTEMPORARY CRAFT,  
FURNITURE, LIGHTING  
AND ART

"Yen for Solidity" Melissa Haid Fused Glass Sculpture 50" h x 17" w x 6" d

225 Canyon Road • Santa Fe, New Mexico 87501 • 505.984.1688 • fax 505.992.8433 • lamesasf@aol.com  
Open Monday through Saturday, 10 am to 5 pm • Sunday, 11 am to 4 pm • Map #65



# LA MESA OF SANTA FE

SINCE 1982

A GALLERY OF THE FINEST QUALITY CONTEMPORARY  
CRAFT, FURNITURE, LIGHTING AND ART

Extraordinary collection  
of fused, kiln formed,  
cast and blown glass

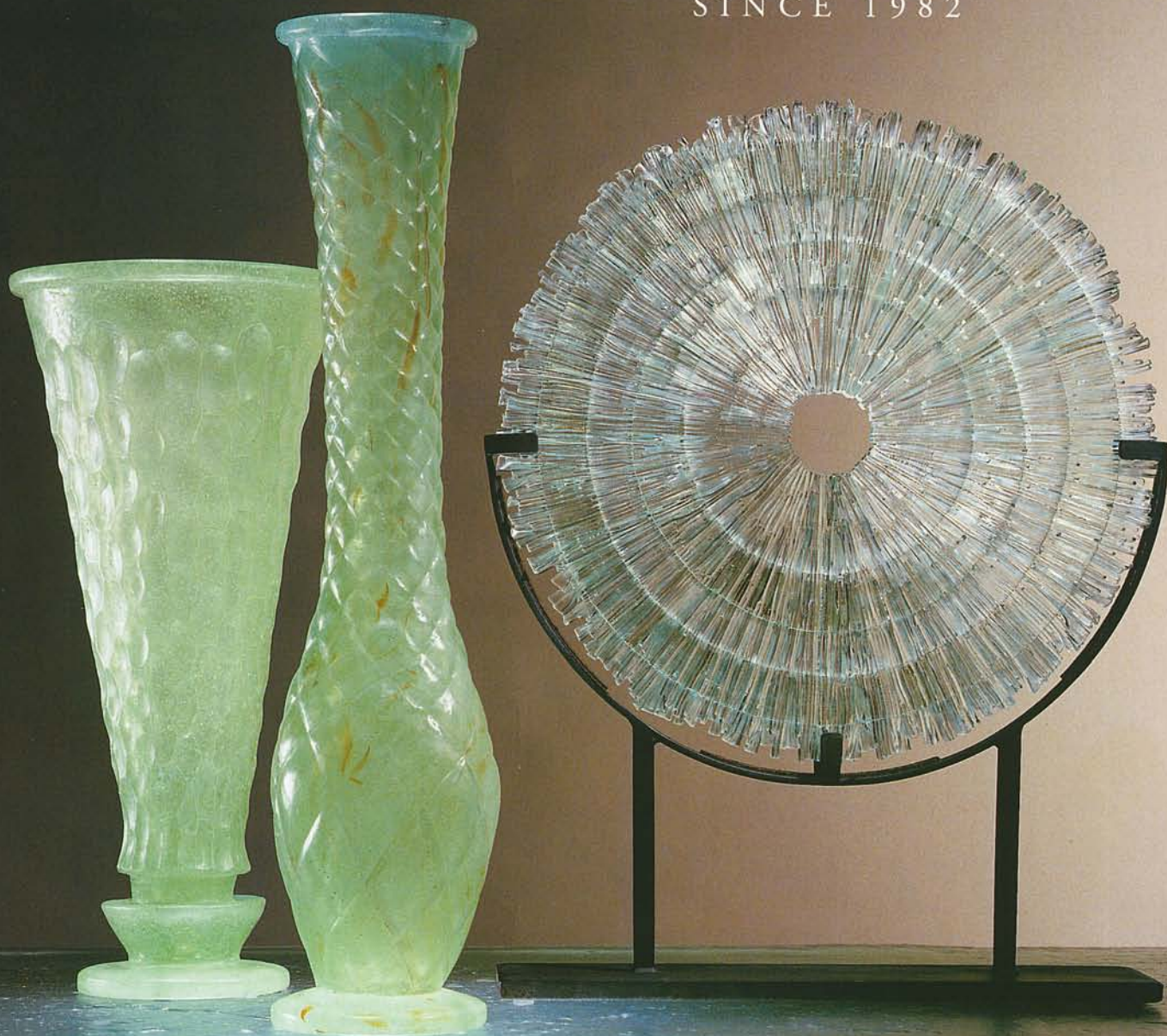


225 Canyon Road • Santa Fe, New Mexico 87501 • 505.984.1688 • fax 505.992.8433 • lamesasf@aol.com  
Open Monday through Saturday, 10 am to 5 pm • Sunday, 11 am to 4 pm • Map #65



# LA MESA OF SANTA FE

SINCE 1982



Lost Wax Cast Glass Vases by Richard Ambrose Mole

Fused Glass Sculpture by Melissa Haid "Blossom #1"

Custom Cast Glass Tabletop by Duane Dahl

225 Canyon Road • Santa Fe, New Mexico 87501 • 505.984.1688 • [lamesaofsantafe.com](http://lamesaofsantafe.com)  
Open Monday through Saturday, 10 am to 5 pm • Sunday, 11 am to 4 pm • Map #73





## La Mesa of Santa Fe

225 Canyon Road  
Santa Fe, NM 87501

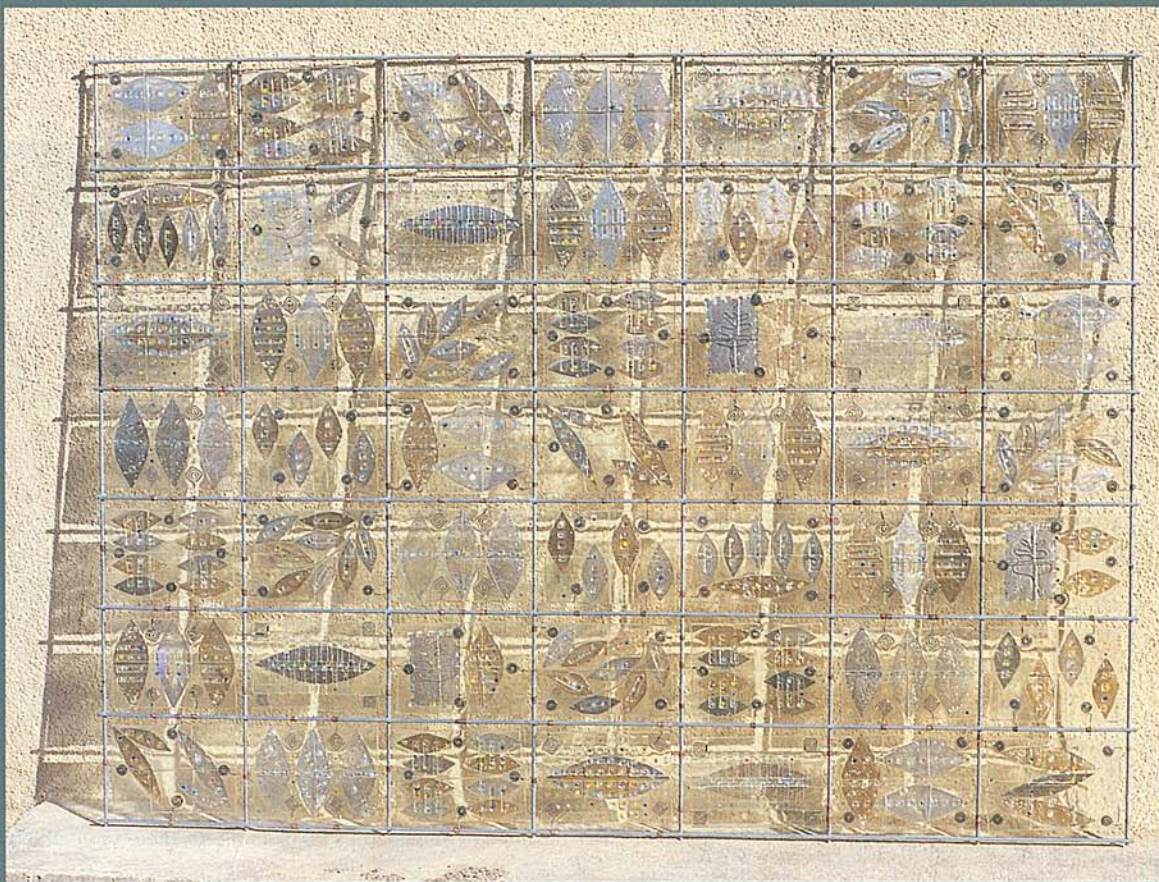
505.984.1688  
[www.lamesaofsantafe.com](http://www.lamesaofsantafe.com)



# MELISSA HAID



225 Canyon Road  
Santa Fe, NM 87501  
505-984-1688  
lamesasf@aol.com



*7:30 Tuesday Morning, fused glass wall sculpture, 42" x 56"*



# Melissa Haid



Fused Glass Wall Hangings

photo: ©2009 Wendy McEathern



La Mesa  
of Santa Fe

225 Canyon Road  
Santa Fe, NM 87501  
505-984-1688  
[www.lamesaofsantafe.com](http://www.lamesaofsantafe.com)



MELISSA  
HAID



225 Canyon Road  
Santa Fe, NM 87501  
505-984-1688  
lamesasf@aol.com

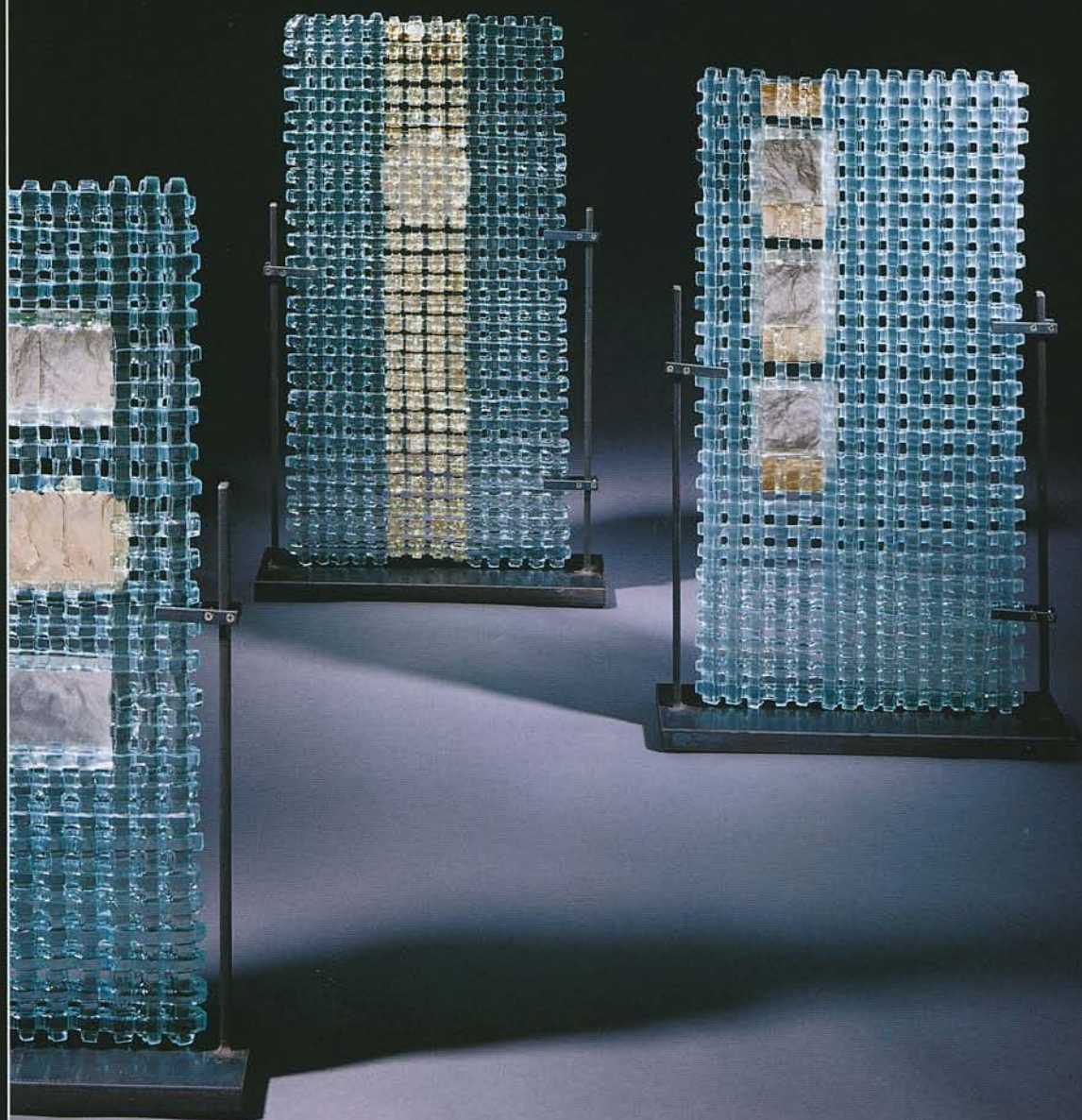


*Dream of White Flowers, fused glass panel, 30" x 60"*

PHOTO BY HERBERT LOTZ



"Documents" Melissa Haid Fused Glass Sculpture 32" h x 19" w x 6" d



A GALLERY OF  
THE FINEST  
QUALITY  
CONTEMPORARY  
CRAFT,  
FURNITURE,  
LIGHTING  
AND ART

SINCE 1982

## LA MESA OF SANTA FE

225 Canyon Road • Santa Fe, New Mexico 87501 • 505.984.1688 • fax 505.992.8433  
lamesasf@aol.com • Open Monday through Saturday, 10 am to 5 pm • Sunday, 11 am to 4 pm • Map #65



# GLASS LANDSCAPES

Melissa Haid's unique wall hangings and sculptures invite a close-up look.

BY EMILY VAN CLEVE



*"Spill," fused glass, 9 1/2" x 10"*

Melissa Haid likes everything about the process of creating her glass wall hangings and free-standing sculptures. She enjoys cutting tiny pieces of glass out of sheets of old window glass, laying colored glass beads, gold mica, and copper wire between many layers of glass, and firing the assemblage in an electric kiln. It's a process she's developed through years of experimentation and hard work.

"There's an ephemeral, otherworldly

quality to glass that I love," observes the northern New Mexico artist. "I also get a great deal of pleasure from relinquishing the glass to the kiln. I don't think about the finished product during the week it can take for firing and cooling. I just continue on in the creative process."

Haid's unusual glass wall hangings and sculptures are unlike any other glass art in the marketplace. Each intricately assembled piece is as fascinating to look at as it is

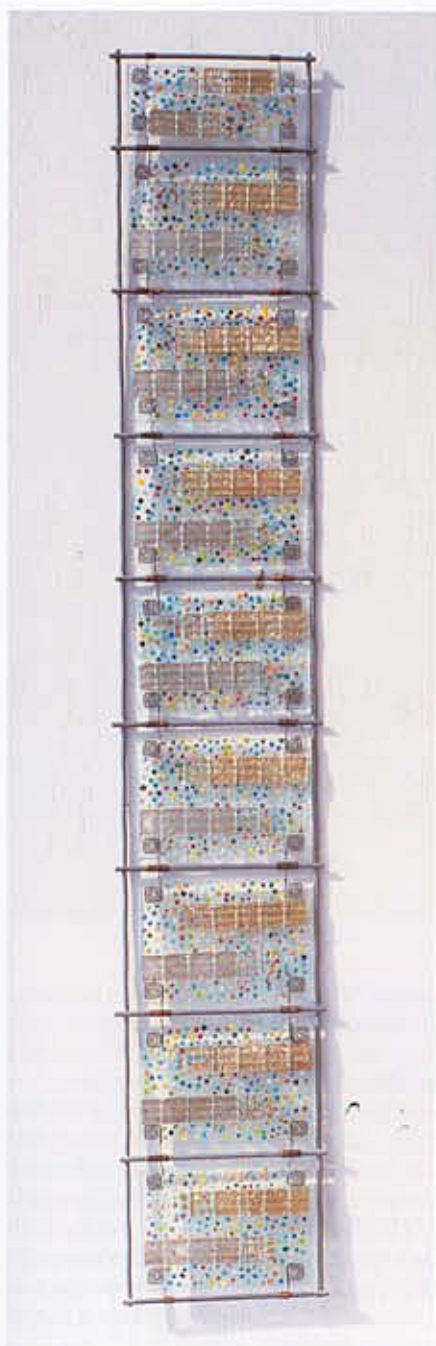
sensual to the touch. These thick, textured pieces can be light enough to hang on the wall or massive enough to adorn an outdoor garden space. "I see my work as pieces of landscape," she notes. She is so comfortable utilizing glass and her other sculptural components that it may seem as if she has been working with these materials since the beginning of her career.

In fact, Haid was a ceramicist who took her first clay class when she was ten years





*"Bunch #2," fused glass, left: full size, 8" × 28" × 3" right, detail*



*"There and Back," fused glass, 48" × 8"*



*"Getting from Top to Bottom," fused glass, 7" × 45" × 1"*

old. Beginning in grade school, she took art classes at the Art Institute of Chicago. She received a B.F.A. in ceramics and textiles at the Art Institute before moving to Madison, Wisconsin, to pursue two master's degrees in sculpture and ceramics. She was introduced to glass during graduate school.

"The University of Wisconsin was known for its glass department," she points out. "I continued to work in clay but I also began working with glass. My first piece with glass was made in 1986 while I was working on my Master of Arts degree. I submitted a photo of an early piece to a juried international expo in Tokyo, Japan. The piece was accepted and purchased."

Although Haid still makes ceramic

pieces, she focuses most of her artistic drive into her glass work. The firing process determines the range of materials that can survive temperatures of 1,350 degrees Fahrenheit, but she constantly pushes the envelope of possibilities and tries to create even more astonishing and dynamic pieces.

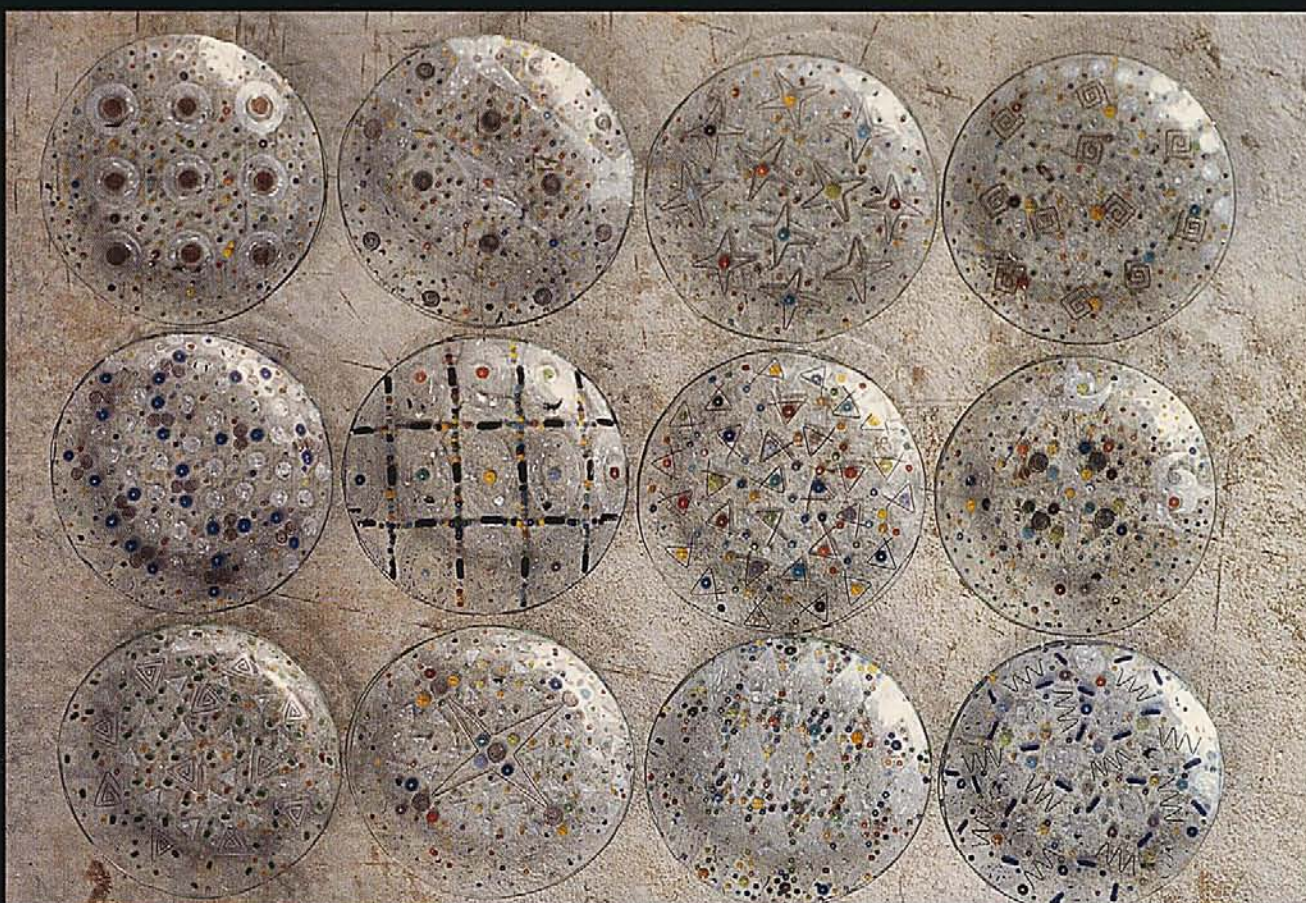
"I have a fondness for beauty," she says. "I'd like people to feel a sense of wonder when they look at my work. My goal is to create unexpected beauty."

*Melissa Haid's work can be seen at La Mesa of Santa Fe, 225 Canyon Road. Hours: 10:00-5:00 Monday-Saturday; 11:00-4:00 Sunday. (505) 984-1688; Fax: 992-8433; e-mail: LAMESASF@aol.com.*





1/2 SUSHI TRAYS



HORS D'OEUVRE PLATES